

Datasheet for ABIN6141946
anti-HOXB9 antibody (AA 1-80)



[Go to Product page](#)

1 Image

Overview

Quantity:	100 µL
Target:	HOXB9
Binding Specificity:	AA 1-80
Reactivity:	Human
Host:	Rabbit
Clonality:	Polyclonal
Conjugate:	This HOXB9 antibody is un-conjugated
Application:	Western Blotting (WB)

Product Details

Immunogen:	Recombinant fusion protein containing a sequence corresponding to amino acids 1-80 of human HOXB9 (NP_076922.1).
Sequence:	MSISGTLSSY YVDSIISHES EDAPPAKFPS GQYASSRQPG HAEHLEFPSC SFQPKAPVFG ASWAPLSPHA SGSLPSVYHP
Isotype:	IgG
Cross-Reactivity:	Human, Mouse, Rat
Characteristics:	Polyclonal Antibodies
Purification:	Affinity purification

Target Details

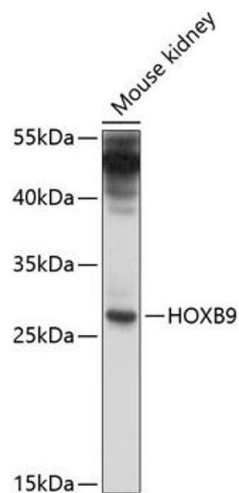
Target:	HOXB9
Alternative Name:	HOXB9 (HOXB9 Products)
Background:	This gene is a member of the Abd-B homeobox family and encodes a protein with a homeobox DNA-binding domain. It is included in a cluster of homeobox B genes located on chromosome 17. The encoded nuclear protein functions as a sequence-specific transcription factor that is involved in cell proliferation and differentiation. Increased expression of this gene is associated with some cases of leukemia, prostate cancer and lung cancer.,HOXB9,HOX-2.5,HOX2,HOX2E,Epigenetics & Nuclear Signaling,Transcription Factors,HOBX9
Molecular Weight:	28 kDa
Gene ID:	3219
UniProt:	P17482

Application Details

Application Notes:	WB,1:500 - 1:2000
Restrictions:	For Research Use only

Handling

Format:	Liquid
Buffer:	PBS with 0.02 % sodium azide,50 % glycerol, pH 7.3.
Preservative:	Sodium azide
Precaution of Use:	This product contains Sodium azide: a POISONOUS AND HAZARDOUS SUBSTANCE which should be handled by trained staff only.
Storage:	-20 °C
Storage Comment:	Store at -20°C. Avoid freeze / thaw cycles.



Western Blotting

Image 1. Western blot analysis of extracts of mouse kidney, using HOXB9 antibody at 1:1000 dilution. Secondary antibody: HRP Goat Anti-Rabbit IgG (H+L) (ABIN1684268 and ABIN3020597) at 1:10000 dilution. Lysates/proteins: 25 µg per lane. Blocking buffer: 3 % nonfat dry milk in TBST. Detection: ECL Enhanced Kit (RM00021). Exposure time: 30s.