



[Go to Product page](#)

Datasheet for ABIN6141962
anti-HPCAL1 antibody (AA 1-193)

2 Images

Overview

Quantity:	100 µL
Target:	HPCAL1
Binding Specificity:	AA 1-193
Reactivity:	Human
Host:	Rabbit
Clonality:	Polyclonal
Conjugate:	This HPCAL1 antibody is un-conjugated
Application:	Western Blotting (WB), Immunoprecipitation (IP)

Product Details

Immunogen:	Recombinant fusion protein containing a sequence corresponding to amino acids 1-193 of human HPCAL1 (NP_002140.2).
Sequence:	MGKQNSKLRP EVLQDLRENT EFTDHELQEW YKGFLLKDCPT GHLTVDEFKK IYANFFPYGD ASKFAEHVFR TFDNNGDGTI DFREFIALS VTSRGKLEQK LKWAFSMYDL DGNGYISRSE MLEIVQAIYK MVSSVMKMPE DESTPEKRTD KIFRQMDTNN DGKLSLEEFI RGAKSDPSIV RLLQCDPSSA SQF
Isotype:	IgG
Cross-Reactivity:	Human, Mouse, Rat
Characteristics:	Polyclonal Antibodies
Purification:	Affinity purification

Target Details

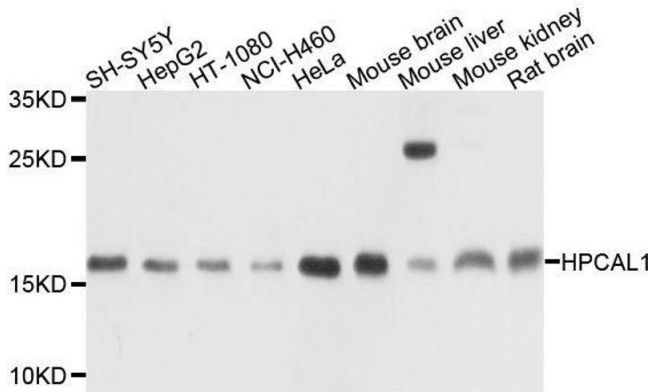
Target:	HPCAL1
Alternative Name:	HPCAL1 (HPCAL1 Products)
Background:	The protein encoded by this gene is a member of neuron-specific calcium-binding proteins family found in the retina and brain. It is highly similar to human hippocalcin protein and nearly identical to the rat and mouse hippocalcin like-1 proteins. It may be involved in the calcium-dependent regulation of rhodopsin phosphorylation and may be of relevance for neuronal signalling in the central nervous system. Several alternatively spliced transcript variants encoding the same protein have been found for this gene.,HPCAL1,BDR1,HLP2,VILIP-3,Neuroscience,Calcium Signaling,HPCAL1
Molecular Weight:	22 kDa
Gene ID:	3241
UniProt:	P37235

Application Details

Application Notes:	WB,1:500 - 1:2000,IP,1:20 - 1:100
Comment:	HIGH QUALITY
Restrictions:	For Research Use only

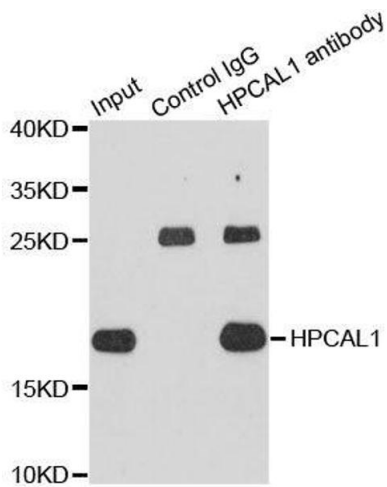
Handling

Format:	Liquid
Buffer:	PBS with 0.02 % sodium azide,50 % glycerol, pH 7.3.
Preservative:	Sodium azide
Precaution of Use:	This product contains Sodium azide: a POISONOUS AND HAZARDOUS SUBSTANCE which should be handled by trained staff only.
Storage:	-20 °C
Storage Comment:	Store at -20°C. Avoid freeze / thaw cycles.



Western Blotting

Image 1. Western blot analysis of extracts of various cell lines, using HPCAL1 antibody.



Immunoprecipitation

Image 2. Immunoprecipitation analysis of extracts of HepG2 cells using HPCAL1 antibody.