



[Go to Product page](#)

Datasheet for ABIN6141987
anti-HRG antibody (AA 20-260)

1 Image

Overview

Quantity:	100 µL
Target:	HRG
Binding Specificity:	AA 20-260
Reactivity:	Human
Host:	Rabbit
Clonality:	Polyclonal
Conjugate:	This HRG antibody is un-conjugated
Application:	Western Blotting (WB)

Product Details

Immunogen:	Recombinant fusion protein containing a sequence corresponding to amino acids 20-260 of human HRG (NP_000403.1).
Sequence:	SPTDCSAVEP EAEKALDLIN KRRRDGYLFQ LLRIADAHLD RVENTTVYYL VLDVQESDCS VLSRKYWNDC EPPDSRRPSE IVIGQCKVIA TRSHESQDL RVIDFNCTTS SVSSALANTK DSPVLIDFFE DTERYRKQAN KALEKYKEEN DDFASFRVDR IERVARVRGG EGTGYFVDFS VRNCPRHHFP RHPNVFGFCR ADLFYDVEAL DLESPKNLVI NCEVFDPQEH ENINGVPPHL G
Isotype:	IgG
Cross-Reactivity:	Mouse, Rat
Characteristics:	Polyclonal Antibodies
Purification:	Affinity purification

Target Details

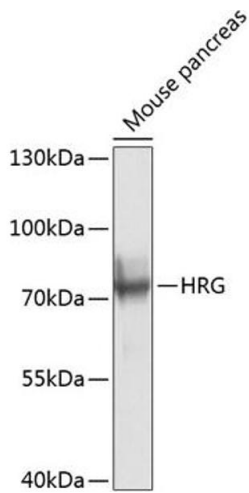
Target:	HRG
Alternative Name:	HRG (HRG Products)
Background:	<p>This histidine-rich glycoprotein contains two cystatin-like domains and is located in plasma and platelets. The physiological function has not been determined but it is known that the protein binds heme, dyes and divalent metal ions. The encoded protein also has a peptide that displays antimicrobial activity against <i>C. albicans</i>, <i>E. coli</i>, <i>S. aureus</i>, <i>P. aeruginosa</i>, and <i>E. faecalis</i>. It can inhibit rosette formation and interacts with heparin, thrombospondin and plasminogen. Two of the protein's effects, the inhibition of fibrinolysis and the reduction of inhibition of coagulation, indicate a potential prothrombotic effect. Mutations in this gene lead to thrombophilia due to abnormal histidine-rich glycoprotein levels.,HRG,HPRG,HRGP,THPH11,Cardiovascular,Angiogenesis,Blood,Coagulation,Serum Proteins,HRG</p>
Molecular Weight:	59 kDa
Gene ID:	3273
UniProt:	P04196

Application Details

Application Notes:	WB,1:500 - 1:2000
Comment:	HIGH QUALITY
Restrictions:	For Research Use only

Handling

Format:	Liquid
Buffer:	PBS with 0.02 % sodium azide,50 % glycerol, pH 7.3.
Preservative:	Sodium azide
Precaution of Use:	This product contains Sodium azide: a POISONOUS AND HAZARDOUS SUBSTANCE which should be handled by trained staff only.
Storage:	-20 °C
Storage Comment:	Store at -20°C. Avoid freeze / thaw cycles.



Western Blotting

Image 1. Western blot analysis of extracts of mouse pancreas, using HRG antibody (ABIN6128359, ABIN6141987, ABIN6141988 and ABIN6224492) at 1:1000 dilution. Secondary antibody: HRP Goat Anti-Rabbit IgG (H+L) (ABIN1684268 and ABIN3020597) at 1:10000 dilution. Lysates/proteins: 25 μ g per lane. Blocking buffer: 3 % nonfat dry milk in TBST. Detection: ECL Basic Kit (RM00020). Exposure time: 1s.