

Datasheet for ABIN6142060  
**anti-HSPE1 antibody (AA 1-102)**

## 3 Images

[Go to Product page](#)

## Overview

Quantity:	100 µL
Target:	HSPE1
Binding Specificity:	AA 1-102
Reactivity:	Human
Host:	Rabbit
Clonality:	Polyclonal
Conjugate:	This HSPE1 antibody is un-conjugated
Application:	Western Blotting (WB)

## Product Details

Immunogen:	Recombinant fusion protein containing a sequence corresponding to amino acids 1-102 of human HSPE1/HSP10/CPN10 (NP_002148.1).
Sequence:	MAGQAFRKFL PLFDRVLVER SAAETVTKGG IMLPEKSQ GK VLQATVVAVG SGSKGKGGEI QPVSVKVGDK VLLPEYGGTK VVLDDKDYFL FRDGDILGKY VD
Isotype:	IgG
Cross-Reactivity:	Human, Mouse, Rat
Characteristics:	Polyclonal Antibodies
Purification:	Affinity purification

## Target Details

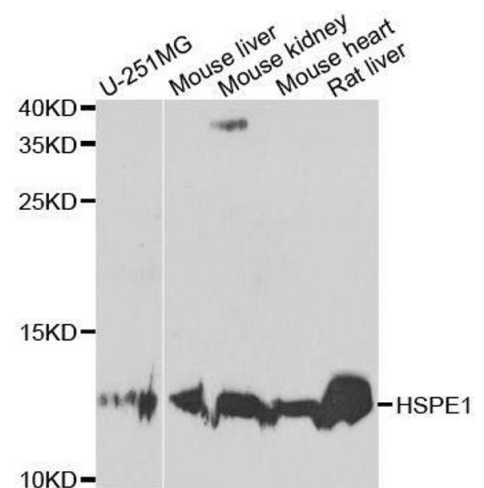
Target:	HSPE1
Alternative Name:	HSPE1 ( <a href="#">HSPE1 Products</a> )
Background:	<p>This gene encodes a major heat shock protein which functions as a chaperonin. Its structure consists of a heptameric ring which binds to another heat shock protein in order to form a symmetric, functional heterodimer which enhances protein folding in an ATP-dependent manner. This gene and its co-chaperonin, HSPD1, are arranged in a head-to-head orientation on chromosome 2. Naturally occurring read-through transcription occurs between this locus and the neighboring locus MOBKL3.,HSPE1,CPN10,EPF,GROES,HSP10,Epigenetics &amp; Nuclear Signaling,RNA Binding,Signal Transduction,Cell Biology &amp; Developmental Biology,Apoptosis,Endocrine &amp; Metabolism,Mitochondrial metabolism,Mitochondrial markers,HSPE1</p>
Molecular Weight:	10 kDa
Gene ID:	3336
UniProt:	<a href="#">P61604</a>
Pathways:	<a href="#">Positive Regulation of Endopeptidase Activity</a>

## Application Details

Application Notes:	WB,1:500 - 1:2000
Comment:	HIGH QUALITY
Restrictions:	For Research Use only

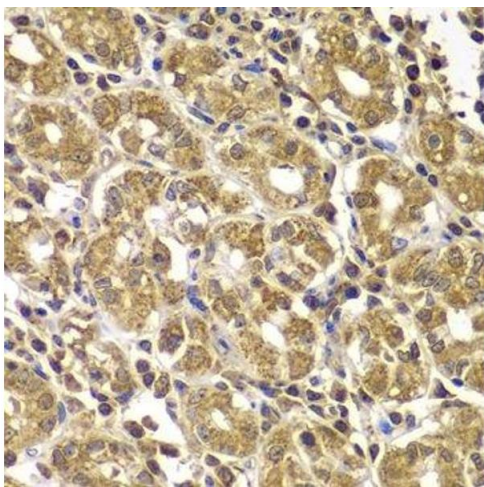
## Handling

Format:	Liquid
Buffer:	PBS with 0.02 % sodium azide,50 % glycerol, pH 7.3.
Preservative:	Sodium azide
Precaution of Use:	This product contains Sodium azide: a POISONOUS AND HAZARDOUS SUBSTANCE which should be handled by trained staff only.
Storage:	-20 °C
Storage Comment:	Store at -20°C. Avoid freeze / thaw cycles.



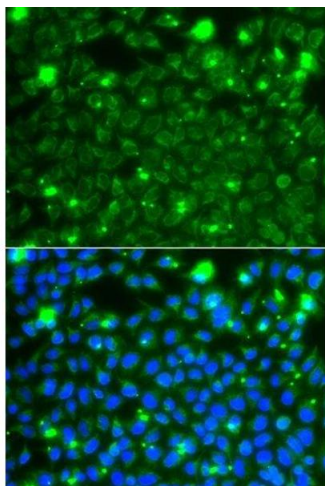
### Western Blotting

**Image 1.** Western blot analysis of extracts of various cell lines, using HSPE1 antibody.



### Immunohistochemistry (Paraffin-embedded Sections)

**Image 2.** Immunohistochemistry of paraffin-embedded human gastric using HSPE1 antibody.



### Immunofluorescence

**Image 3.** Immunofluorescence analysis of A549 cells using HSPE1 antibody.