



[Go to Product page](#)

Datasheet for ABIN6142078
anti-HTRA1 antibody (AA 22-160)

1 Image

Overview

Quantity:	100 µL
Target:	HTRA1
Binding Specificity:	AA 22-160
Reactivity:	Human
Host:	Rabbit
Clonality:	Polyclonal
Conjugate:	This HTRA1 antibody is un-conjugated
Application:	Western Blotting (WB)

Product Details

Immunogen:	Recombinant fusion protein containing a sequence corresponding to amino acids 22-160 of human HTRA1 (NP_002766.1).
Sequence:	AQLSRAGRSA PLAAGCPDRC EPARCPPQPE HCEGGRARDA CGCCEVCGAP EGAACGLQEG PCGEGLQCVV PFGVPASATV RRRAQAGLCV CASSEPVCGS DANTYANLCQ LRAASRRSER LHRPPVIVLQ RGACGQGQE
Isotype:	IgG
Cross-Reactivity:	Mouse, Rat
Characteristics:	Polyclonal Antibodies
Purification:	Affinity purification

Target Details

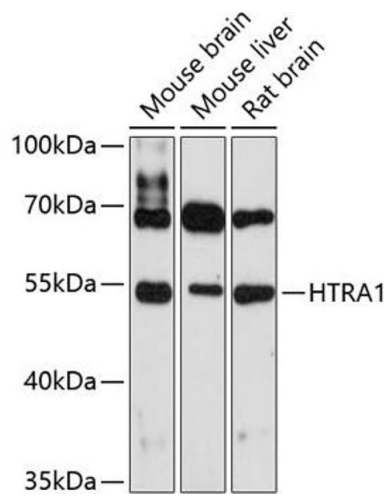
Target:	HTRA1
Alternative Name:	HTRA1 (HTRA1 Products)
Background:	<p>This gene encodes a member of the trypsin family of serine proteases. This protein is a secreted enzyme that is proposed to regulate the availability of insulin-like growth factors (IGFs) by cleaving IGF-binding proteins. It has also been suggested to be a regulator of cell growth. Variations in the promoter region of this gene are the cause of susceptibility to age-related macular degeneration type</p> <p>7.,HTRA1,ARMD7,CADASIL2,CARASIL,HtrA,L56,ORF480,PRSS11,Signal Transduction,Cell Biology & Developmental Biology,Growth factor,HTRA1</p>
Molecular Weight:	51 kDa
Gene ID:	5654
UniProt:	Q92743
Pathways:	Growth Factor Binding

Application Details

Application Notes:	WB,1:500 - 1:2000
Restrictions:	For Research Use only

Handling

Format:	Liquid
Buffer:	PBS with 0.02 % sodium azide,50 % glycerol, pH 7.3.
Preservative:	Sodium azide
Precaution of Use:	This product contains Sodium azide: a POISONOUS AND HAZARDOUS SUBSTANCE which should be handled by trained staff only.
Storage:	-20 °C
Storage Comment:	Store at -20°C. Avoid freeze / thaw cycles.



Western Blotting

Image 1. Western blot analysis of extracts of various cell lines, using HTR antibody (1693) at 1:3000 dilution. Secondary antibody: HRP Goat Anti-Rabbit IgG (H+L) (ABIN1684268 and ABIN3020597) at 1:10000 dilution. Lysates/proteins: 25 µg per lane. Blocking buffer: 3 % nonfat dry milk in TBST. Detection: ECL Enhanced Kit (RM00021). Exposure time: 60s.