

Datasheet for ABIN6142088  
**anti-HUS1B antibody (AA 1-278)**



[Go to Product page](#)

1 Image

## Overview

Quantity:	100 µL
Target:	HUS1B
Binding Specificity:	AA 1-278
Reactivity:	Human
Host:	Rabbit
Clonality:	Polyclonal
Conjugate:	This HUS1B antibody is un-conjugated
Application:	Western Blotting (WB)

## Product Details

Immunogen:	Recombinant fusion protein containing a sequence corresponding to amino acids 1-278 of human HUS1B (NP_683762.2).
Sequence:	MKFRAKITGK GCLELFIHVS GTVARLAKVC VLRVRPDSL C FGPAGSGGLH EARLWCEVRQ GAFQQFRMEG VSEDLDEIHL ELTAEHLSRA ARSAAGASSL KLQLTHKRRP SLTVAVELVS SLGRARSVVH DLPVRVLP RR VWRDCLPPSL RASDASIRLP RWRTLRSIVE RMANVGSHVL VEANLSGRMT LSIETEVVSI QSYFKNLGNP PQSAVGVPEN RDLESMVQVR VDNRKLLQFL EGQQIHPTTA LCNIWDNTLL QLVLVQEDVS LQYFIPAL
Isotype:	IgG
Cross-Reactivity:	Human, Mouse, Rat
Characteristics:	Polyclonal Antibodies
Purification:	Affinity purification

## Target Details

---

Target:	HUS1B
Alternative Name:	HUS1B ( <a href="#">HUS1B Products</a> )
Background:	The protein encoded by this gene is most closely related to HUS1, a component of a cell cycle checkpoint protein complex involved in cell cycle arrest in response to DNA damage. This protein can interact with the check point protein RAD1 but not with RAD9. Overexpression of this protein has been shown to induce cell death, which suggests a related but distinct role of this protein, as compared to the HUS1.,HUS1B,Epigenetics & Nuclear Signaling,DNA Damage & Repair,HUS1B
Molecular Weight:	30 kDa
Gene ID:	135458
UniProt:	<a href="#">Q8NHY5</a>

## Application Details

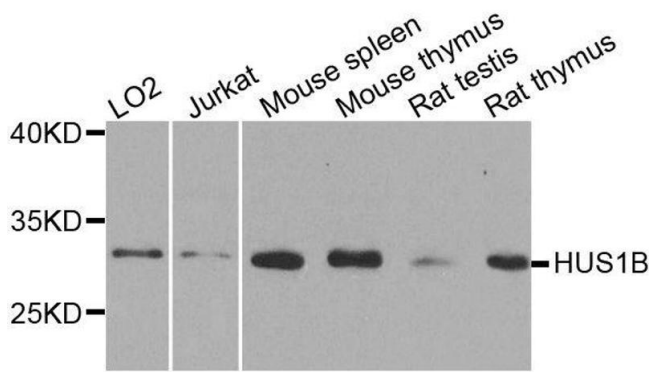
---

Application Notes:	WB,1:500 - 1:2000
Comment:	HIGH QUALITY
Restrictions:	For Research Use only

## Handling

---

Format:	Liquid
Buffer:	PBS with 0.02 % sodium azide,50 % glycerol, pH 7.3.
Preservative:	Sodium azide
Precaution of Use:	This product contains Sodium azide: a POISONOUS AND HAZARDOUS SUBSTANCE which should be handled by trained staff only.
Storage:	-20 °C
Storage Comment:	Store at -20°C. Avoid freeze / thaw cycles.



### Western Blotting

**Image 1.** Western blot analysis of extracts of various cell lines, using HUS1B antibody.