



[Go to Product page](#)

Datasheet for ABIN6142136
anti-ID1 antibody (AA 1-155)

1 Image

Overview

Quantity:	100 µL
Target:	ID1
Binding Specificity:	AA 1-155
Reactivity:	Human
Host:	Rabbit
Clonality:	Polyclonal
Conjugate:	This ID1 antibody is un-conjugated
Application:	Western Blotting (WB)

Product Details

Immunogen:	Recombinant fusion protein containing a sequence corresponding to amino acids 1-155 of human ID1 (NP_002156.2).
Sequence:	MKVASGSTAT AAAGPSCALK AGKTASGAGE VVRCLSEQSV AISRCAGGAG ARLPALLDEQ QVNVLLYDMN GCYSRLKELV PTLPQNRKVS KVEILQHVID YIRDLQLELN SESEVGTPGG RGLPVRAPLS TLNGEISALT AEAACVPADD RILCR
Isotype:	IgG
Cross-Reactivity:	Human, Mouse, Rat
Characteristics:	Polyclonal Antibodies
Purification:	Affinity purification

Target Details

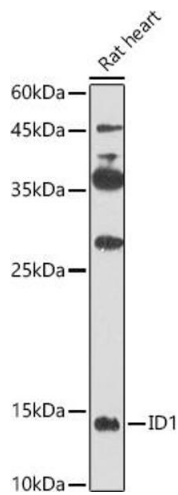
Target:	ID1
Alternative Name:	ID1 (ID1 Products)
Background:	The protein encoded by this gene is a helix-loop-helix (HLH) protein that can form heterodimers with members of the basic HLH family of transcription factors. The encoded protein has no DNA binding activity and therefore can inhibit the DNA binding and transcriptional activation ability of basic HLH proteins with which it interacts. This protein may play a role in cell growth, senescence, and differentiation. Two transcript variants encoding different isoforms have been found for this gene.,ID1,ID,bHLHb24,Epigenetics & Nuclear Signaling,Transcription Factors,Cancer,Invasion and Metastasis,Signal Transduction,Cardiovascular,Angiogenesis,ID1
Molecular Weight:	15 kDa/16 kDa
Gene ID:	3397
UniProt:	P41134

Application Details

Application Notes:	WB,1:500 - 1:2000
Restrictions:	For Research Use only

Handling

Format:	Liquid
Buffer:	PBS with 0.02 % sodium azide,50 % glycerol, pH 7.3.
Preservative:	Sodium azide
Precaution of Use:	This product contains Sodium azide: a POISONOUS AND HAZARDOUS SUBSTANCE which should be handled by trained staff only.
Storage:	-20 °C
Storage Comment:	Store at -20°C. Avoid freeze / thaw cycles.



Western Blotting

Image 1. Western blot analysis of extracts of Rat heart, using ID1 antibody (ABIN6130480, ABIN6142136, ABIN6142137 and ABIN6224493) at 1:500 dilution. Secondary antibody: HRP Goat Anti-Rabbit IgG (H+L) (ABIN1684268 and ABIN3020597) at 1:1000 dilution. Lysates/proteins: 25 μ g per lane. Blocking buffer: 3 % nonfat dry milk in TBST. Detection: ECL Enhanced Kit (RM00020). Exposure time: 60s.