

Datasheet for ABIN6142164
anti-IFI27 antibody (AA 1-100)[Go to Product page](#)

1 Image

Overview

Quantity:	100 µL
Target:	IFI27
Binding Specificity:	AA 1-100
Reactivity:	Human
Host:	Rabbit
Clonality:	Polyclonal
Conjugate:	This IFI27 antibody is un-conjugated
Application:	Western Blotting (WB)

Product Details

Immunogen:	A synthetic peptide corresponding to a sequence within amino acids 1-100 of human IFI27 (NP_005523.3).
Sequence:	MEASALTSSA VTSVAKVVRV ASGSVVLP LARIATVVIGG VVAVPMVLSA MGFTAAGIAS SSIAAKMMSA AAIANGGGVA SGSLVATLQS LGATGLSGLT
Isotype:	IgG
Cross-Reactivity:	Rat
Characteristics:	Polyclonal Antibodies
Purification:	Affinity purification

Target Details

Target:	IFI27
Alternative Name:	IFI27 (IFI27 Products)
Background:	<p>Probable adapter protein involved in different biological processes. Part of the signaling pathways that lead to apoptosis. Involved in type-I interferon-induced apoptosis characterized by a rapid and robust release of cytochrome C from the mitochondria and activation of BAX and caspases 2, 3, 6, 8 and 9. Also functions in TNFSF10-induced apoptosis. May also have a function in the nucleus, where it may be involved in the interferon-induced negative regulation of the transcriptional activity of NR4A1, NR4A2 and NR4A3 through the enhancement of XPO1-mediated nuclear export of these nuclear receptors. May thereby play a role in the vascular response to injury (By similarity. In the innate immune response, has an antiviral activity towards hepatitis C virus/HCV. May prevent the replication of the virus by recruiting both the hepatitis C virus non-structural protein 5A/NS5A and the ubiquitination machinery via SKP2, promoting the ubiquitin-mediated proteasomal degradation of</p> <p>NS5A,IFI27,FAM14D,ISG12,ISG12A,P27,Immunology & Inflammation,Cell Intrinsic Innate Immunity Signaling Pathway,IFI27</p>
Molecular Weight:	11 kDa
Gene ID:	3429
UniProt:	P40305
Pathways:	Positive Regulation of Peptide Hormone Secretion , Negative Regulation of Hormone Secretion , Sensory Perception of Sound , Mitotic G1-G1/S Phases , DNA Replication , Positive Regulation of Endopeptidase Activity , Synthesis of DNA , Autophagy

Application Details

Application Notes:	WB,1:500 - 1:2000
Restrictions:	For Research Use only

Handling

Format:	Liquid
Buffer:	PBS with 0.02 % sodium azide,50 % glycerol, pH 7.3.
Preservative:	Sodium azide
Precaution of Use:	This product contains Sodium azide: a POISONOUS AND HAZARDOUS SUBSTANCE which

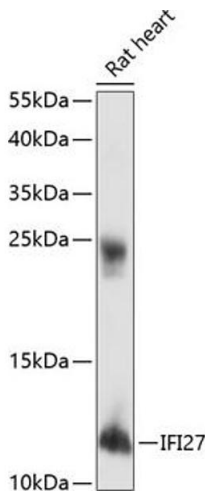
Handling

should be handled by trained staff only.

Storage: -20 °C

Storage Comment: Store at -20°C. Avoid freeze / thaw cycles.

Images



Western Blotting

Image 1. Western blot analysis of extracts of rat heart, using IFI27 antibody (ABIN6133763, ABIN6142164, ABIN6142165 and ABIN6218449) at 1:1000 dilution. Secondary antibody: HRP Goat Anti-Rabbit IgG (H+L) (ABIN1684268 and ABIN3020597) at 1:10000 dilution. Lysates/proteins: 25 µg per lane. Blocking buffer: 3 % nonfat dry milk in TBST. Detection: ECL Basic Kit (RM00020). Exposure time: 90s.