

Datasheet for ABIN6142172
anti-IFI6 antibody (AA 1-130)[Go to Product page](#)

1 Image

Overview

Quantity:	100 µL
Target:	IFI6
Binding Specificity:	AA 1-130
Reactivity:	Human
Host:	Rabbit
Clonality:	Polyclonal
Conjugate:	This IFI6 antibody is un-conjugated
Application:	Western Blotting (WB)

Product Details

Immunogen:	Recombinant fusion protein containing a sequence corresponding to amino acids 1-130 of human IFI6 (NP_002029.3).
Sequence:	MRQKAVSLFL CYLLLFTCSG VEAGKKKCSE SSDSGSGFWK ALTFMAVGGG LAVAGLPALG FTGAGIAANS VAASLMSWSA ILNGGGVPAG GLVATLQSLG AGGSSVVIGN IGALMGYATH KYLDSEEDDEE
Isotype:	IgG
Cross-Reactivity:	Human
Characteristics:	Polyclonal Antibodies
Purification:	Affinity purification

Target Details

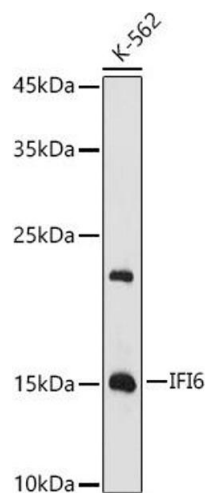
Target:	IFI6
Alternative Name:	IFI6 (IFI6 Products)
Background:	This gene was first identified as one of the many genes induced by interferon. The encoded protein may play a critical role in the regulation of apoptosis. A minisatellite that consists of 26 repeats of a 12 nucleotide repeating element resembling the mammalian splice donor consensus sequence begins near the end of the second exon. Alternatively spliced transcript variants that encode different isoforms by using the two downstream repeat units as splice donor sites have been described.,IFI6,6-16,FAM14C,G1P3,IFI-6-16,IFI616,Cell Biology & Developmental Biology,Apoptosis,Endocrine & Metabolism,IFI6
Molecular Weight:	12 kDa/13 kDa
Gene ID:	2537
UniProt:	P09912

Application Details

Application Notes:	WB,1:500 - 1:2000
Restrictions:	For Research Use only

Handling

Format:	Liquid
Buffer:	PBS with 0.02 % sodium azide,50 % glycerol, pH 7.3.
Preservative:	Sodium azide
Precaution of Use:	This product contains Sodium azide: a POISONOUS AND HAZARDOUS SUBSTANCE which should be handled by trained staff only.
Storage:	-20 °C
Storage Comment:	Store at -20°C. Avoid freeze / thaw cycles.



Western Blotting

Image 1. Western blot analysis of extracts of K-562 cells, using IFI6 antibody (ABIN6128123, ABIN6142172, ABIN6142173 and ABIN6221766) at 1:1000 dilution. Secondary antibody: HRP Goat Anti-Rabbit IgG (H+L) (ABIN1684268 and ABIN3020597) at 1:10000 dilution. Lysates/proteins: 25 µg per lane. Blocking buffer: 3 % nonfat dry milk in TBST. Detection: ECL Enhanced Kit (RM00021). Exposure time: 180s.