



[Go to Product page](#)

Datasheet for ABIN6142186
anti-IFITM3 antibody (AA 1-133)

6 Images

Overview

Quantity:	100 µL
Target:	IFITM3
Binding Specificity:	AA 1-133
Reactivity:	Human
Host:	Rabbit
Clonality:	Polyclonal
Conjugate:	This IFITM3 antibody is un-conjugated
Application:	Western Blotting (WB), Immunohistochemistry (IHC), Immunofluorescence (IF)

Product Details

Immunogen:	Recombinant fusion protein containing a sequence corresponding to amino acids 1-133 of human IFITM3 (NP_066362.2).
Sequence:	MNHTVQTFFS PVNSGQPPNY EMLKEEHEVA VLGAPHNPAP PTSTVIHIRS ETSVDPDHVVW SLFNTLFMNP CCLGFIAFAY SVKSRDRKMV GDVTGAQAYA STAKCLNIWA LILGILMTIL LIVIPVLIFQ AYG
Isotype:	IgG
Cross-Reactivity:	Human, Mouse, Rat
Characteristics:	Polyclonal Antibodies
Purification:	Affinity purification

Target Details

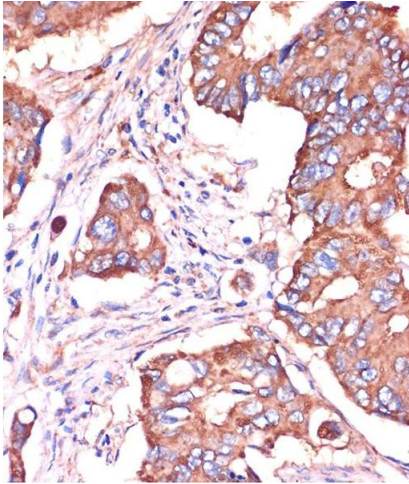
Target:	IFITM3
Alternative Name:	IFITM3 (IFITM3 Products)
Background:	The protein encoded by this gene is an interferon-induced membrane protein that helps confer immunity to influenza A H1N1 virus, West Nile virus, and dengue virus. Two transcript variants, only one of them protein-coding, have been found for this gene. Another variant encoding an N-terminally truncated isoform has been reported, but the full-length nature of this variant has not been determined.,IFITM3,1-8U,DSPA2b,IP15,Cell Biology & Developmental Biology,Stem Cells,Germline Stem Cells,IFITM3
Molecular Weight:	14 kDa
Gene ID:	10410
UniProt:	Q01628

Application Details

Application Notes:	WB,1:500 - 1:2000,IHC,1:50 - 1:200,IF,1:50 - 1:100
Comment:	HIGH QUALITY
Restrictions:	For Research Use only

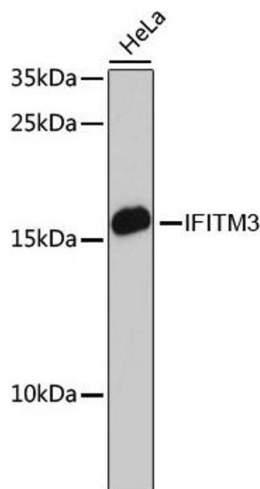
Handling

Format:	Liquid
Buffer:	PBS with 0.02 % sodium azide,50 % glycerol, pH 7.3.
Preservative:	Sodium azide
Precaution of Use:	This product contains Sodium azide: a POISONOUS AND HAZARDOUS SUBSTANCE which should be handled by trained staff only.
Storage:	-20 °C
Storage Comment:	Store at -20°C. Avoid freeze / thaw cycles.



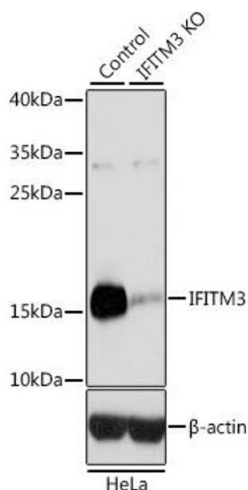
Immunohistochemistry

Image 1. Immunohistochemistry of paraffin-embedded Human colon carcinoma using [KO Validated] IFITM3 Rabbit pAb (ABIN6130482, ABIN6142186, ABIN6142187 and ABIN7101416) at dilution of 1:100 (40x lens). Perform microwave antigen retrieval with 10 mM PBS buffer pH 7.2 before commencing with IHC staining protocol.



Western Blotting

Image 2. Western blot analysis of extracts of HeLa cells, using IFITM3 antibody (ABIN6130482, ABIN6142186, ABIN6142187 and ABIN7101416) at 1:3000 dilution. Secondary antibody: HRP Goat Anti-Rabbit IgG (H+L) (ABIN1684268 and ABIN3020597) at 1:10000 dilution. Lysates/proteins: 25 µg per lane. Blocking buffer: 3 % nonfat dry milk in TBST. Detection: ECL Basic Kit (RM00020). Exposure time: 90s.



Western Blotting

Image 3. Western blot analysis of extracts from normal (control) and IFITM3 knockout (KO) HeLa cells, using IFITM3 antibody (ABIN6130482, ABIN6142186, ABIN6142187 and ABIN7101416) at 1:3000 dilution. Secondary antibody: HRP Goat Anti-Rabbit IgG (H+L) (ABIN1684268 and ABIN3020597) at 1:10000 dilution. Lysates/proteins: 25 µg per lane. Blocking buffer: 3 % nonfat dry milk in TBST. Detection: ECL Basic Kit (RM00020). Exposure time: 1s.

Please check the [product details page](#) for more images. Overall 6 images are available for ABIN6142186.