



[Go to Product page](#)

Datasheet for ABIN6142199
anti-IFNGR2 antibody (C-Term)

1 Image

Overview

Quantity:	100 µL
Target:	IFNGR2
Binding Specificity:	C-Term
Reactivity:	Human
Host:	Rabbit
Clonality:	Polyclonal
Conjugate:	This IFNGR2 antibody is un-conjugated
Application:	Western Blotting (WB), Immunohistochemistry (IHC), Immunofluorescence (IF)

Product Details

Immunogen:	A synthetic peptide corresponding to a sequence within amino acids 200 to the C-terminus of human IFNGR2 (NP_005525.2).
Sequence:	DNLKPSRVYC LQVQAQLLWN KSNIFRVGHL SNISCYETMA DASTELQQVI LISVGTFSLL SVLAGACFFL VLKYRGLIKY WFHTPPSIPL QIEEYBKDPT QPILEALDKD SSPKDDVWDS VSIISFPEKE QEDVLQTL
Isotype:	IgG
Cross-Reactivity:	Human, Mouse, Rat
Characteristics:	Polyclonal Antibodies
Purification:	Affinity purification

Target Details

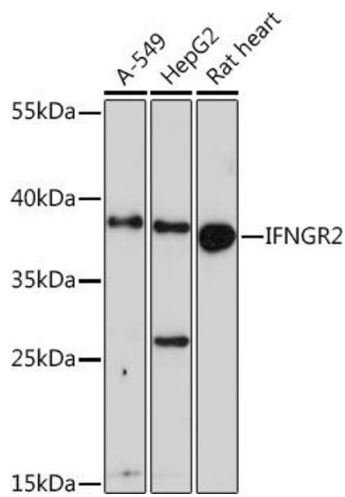
Target:	IFNGR2
Alternative Name:	IFNGR2 (IFNGR2 Products)
Background:	This gene (IFNGR2) encodes the non-ligand-binding beta chain of the gamma interferon receptor. Human interferon-gamma receptor is a heterodimer of IFNGR1 and IFNGR2. Defects in IFNGR2 are a cause of mendelian susceptibility to mycobacterial disease (MSMD), also known as familial disseminated atypical mycobacterial infection. MSMD is a genetically heterogeneous disease with autosomal recessive, autosomal dominant or X-linked inheritance.,IFNGR2,AF-1,IFGR2,IFNGT1,IMD28,Endocrine & Metabolism,Endocrine and metabolic diseases,Obesity,Immunology & Inflammation,Cytokines,Interferons,Cell Intrinsic Innate Immunity Signaling Pathway,Stem Cells,IFNGR2
Molecular Weight:	37 kDa
Gene ID:	3460
UniProt:	P38484

Application Details

Application Notes:	WB,1:500 - 1:2000,IHC,1:50 - 1:100,IF,1:50 - 1:200
Restrictions:	For Research Use only

Handling

Format:	Liquid
Buffer:	PBS with 0.02 % sodium azide,50 % glycerol, pH 7.3.
Preservative:	Sodium azide
Precaution of Use:	This product contains Sodium azide: a POISONOUS AND HAZARDOUS SUBSTANCE which should be handled by trained staff only.
Storage:	-20 °C
Storage Comment:	Store at -20°C. Avoid freeze / thaw cycles.



Western Blotting

Image 1. Western blot analysis of extracts of various cell lines, using IFNGR2 Rabbit pAb (ABIN6134791, ABIN6142199, ABIN6142201 and ABIN6218514) at 1:1000 dilution. Secondary antibody: HRP Goat Anti-Rabbit IgG (H+L) (ABIN1684268 and ABIN3020597) at 1:10000 dilution. Lysates/proteins: 25 µg per lane. Blocking buffer: 3 % nonfat dry milk in TBST. Detection: ECL Enhanced Kit (RM00021). Exposure time: 90s.