



[Go to Product page](#)

Datasheet for ABIN6142215  
**anti-IFRD1 antibody (AA 1-240)**

1 Image

Overview

Quantity:	100 µL
Target:	IFRD1
Binding Specificity:	AA 1-240
Reactivity:	Human
Host:	Rabbit
Clonality:	Polyclonal
Conjugate:	This IFRD1 antibody is un-conjugated
Application:	Western Blotting (WB), Immunofluorescence (IF)

Product Details

Immunogen:	Recombinant fusion protein containing a sequence corresponding to amino acids 1-240 of human IFRD1 (NP_001541.2).
Sequence:	MPKNKKRNTPT HRGSSAGGGG SGAAAATAAT AGGQHRNVQP FSDEDASLET MSHCSGYSDP SSFAEDGPEV LDEEGTQEDL EYKLGKGLIDL TLDKSAKTRQ AALEGKKNAL ASKMLYEFIL ERRMTLTDSI ERCLKKGKSD EQRAAALAS VLCIQLGPGI ESEEILKTLG PILKKIICDG SASMQRQTC ATCFGVCCFI ATDDITELYS TLECLNIFT KSYLKEKDTT VICSTPNTVL
Isotype:	IgG
Cross-Reactivity:	Human, Mouse, Rat
Characteristics:	Polyclonal Antibodies
Purification:	Affinity purification

## Target Details

---

Target:	IFRD1
Alternative Name:	IFRD1 ( <a href="#">IFRD1 Products</a> )
Background:	<p>This gene is an immediate early gene that encodes a protein related to interferon-gamma. This protein may function as a transcriptional co-activator/repressor that controls the growth and differentiation of specific cell types during embryonic development and tissue regeneration. Mutations in this gene are associated with sensory/motor neuropathy with ataxia. This gene may also be involved in modulating the pathogenesis of cystic fibrosis lung disease. Alternate splicing results in multiple transcript variants.,IFRD1,PC4,TIS7,Epigenetics &amp; Nuclear Signaling,Cancer,Tumor suppressors,p53 pathway,Cell Biology &amp; Developmental Biology,Apoptosis,Cell Cycle,Cell cycle inhibitors,Cell differentiation,IFRD1</p>
Molecular Weight:	45 kDa/50 kDa
Gene ID:	3475
UniProt:	<a href="#">000458</a>

## Application Details

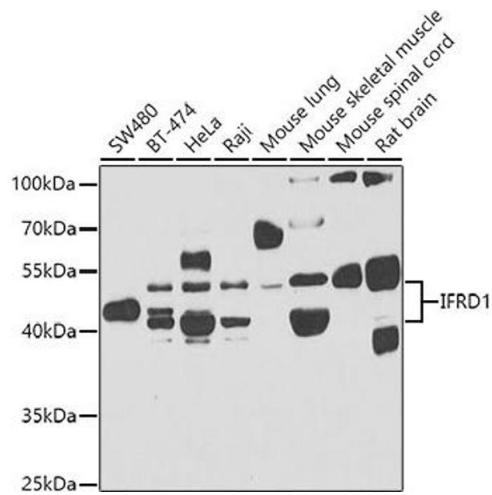
---

Application Notes:	WB,1:500 - 1:2000,IF,1:50 - 1:100
Comment:	HIGH QUALITY
Restrictions:	For Research Use only

## Handling

---

Format:	Liquid
Buffer:	PBS with 0.02 % sodium azide,50 % glycerol, pH 7.3.
Preservative:	Sodium azide
Precaution of Use:	This product contains Sodium azide: a POISONOUS AND HAZARDOUS SUBSTANCE which should be handled by trained staff only.
Storage:	-20 °C
Storage Comment:	Store at -20°C. Avoid freeze / thaw cycles.



### Western Blotting

**Image 1.** Western blot analysis of extracts of various cell lines, using IFRD1 antibody (ABIN6129279, ABIN6142215, ABIN6142217 and ABIN6223314) at 1:1000 dilution. Secondary antibody: HRP Goat Anti-Rabbit IgG (H+L) (ABIN1684268 and ABIN3020597) at 1:10000 dilution. Lysates/proteins: 25 µg per lane. Blocking buffer: 3% nonfat dry milk in TBST. Detection: ECL Basic Kit (RM00020). Exposure time: 90s.