

Datasheet for ABIN6142224  
**anti-IFT81 antibody (AA 550-676)**



[Go to Product page](#)

1 Image

## Overview

Quantity:	100 µL
Target:	IFT81
Binding Specificity:	AA 550-676
Reactivity:	Human
Host:	Rabbit
Clonality:	Polyclonal
Conjugate:	This IFT81 antibody is un-conjugated
Application:	Western Blotting (WB)

## Product Details

Immunogen:	Recombinant fusion protein containing a sequence corresponding to amino acids 550-676 of human IFT81 (NP_054774.2).
Sequence:	VRRLREECLQ EESRYHYTNC MIKNLEVQLR RATDEMKEYI SSDQQEKRKA IREQYTKNTA EQENLGKKLR EKQKVIRESH GPNMKQAKMW RDLEQLMECK KQCFLKQSSQ TSIGQVIQEG GEDRLIL
Isotype:	IgG
Cross-Reactivity:	Human, Mouse, Rat
Characteristics:	Polyclonal Antibodies
Purification:	Affinity purification

## Target Details

---

Target:	IFT81
Alternative Name:	IFT81 ( <a href="#">IFT81 Products</a> )
Background:	The protein encoded by this gene, together with IFT74, forms a tubulin-binding module of intraflagellar transport complex B. This module is involved in transport of tubulin within the cilium, and the encoded protein is required for ciliogenesis. Mutations in this gene are a cause of short-rib polydactyly syndromes.,IFT81,CDV-1,CDV-1R,CDV1,CDV1R,DV1,Signal Transduction,IFT81
Molecular Weight:	12 kDa/50 kDa/79 kDa
Gene ID:	28981
UniProt:	<a href="#">Q8WYA0</a>
Pathways:	<a href="#">Hedgehog Signaling</a>

## Application Details

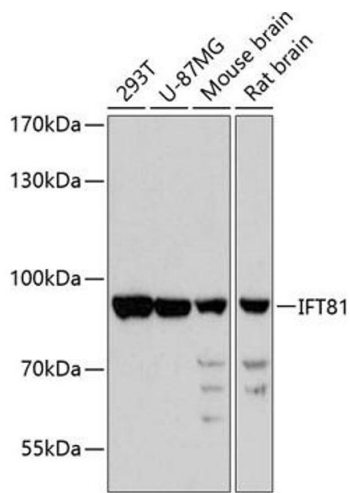
---

Application Notes:	WB,1:500 - 1:2000
Comment:	HIGH QUALITY
Restrictions:	For Research Use only

## Handling

---

Format:	Liquid
Buffer:	PBS with 0.02 % sodium azide,50 % glycerol, pH 7.3.
Preservative:	Sodium azide
Precaution of Use:	This product contains Sodium azide: a POISONOUS AND HAZARDOUS SUBSTANCE which should be handled by trained staff only.
Storage:	-20 °C
Storage Comment:	Store at -20°C. Avoid freeze / thaw cycles.



### Western Blotting

**Image 1.** Western blot analysis of extracts of various cell lines, using IFT81 antibody at 1:3000 dilution. Secondary antibody: HRP Goat Anti-Rabbit IgG (H+L) (ABIN1684268 and ABIN3020597) at 1:10000 dilution. Lysates/proteins: 25 µg per lane. Blocking buffer: 3% nonfat dry milk in TBST. Detection: ECL Basic Kit (RM00020). Exposure time: 90s.