



[Go to Product page](#)

Datasheet for ABIN6142226
anti-IFT88 antibody (AA 534-833)

2 Images

Overview

Quantity:	100 µL
Target:	IFT88
Binding Specificity:	AA 534-833
Reactivity:	Human
Host:	Rabbit
Clonality:	Polyclonal
Conjugate:	This IFT88 antibody is un-conjugated
Application:	Western Blotting (WB), Immunofluorescence (IF)

Product Details

Immunogen:	Recombinant fusion protein containing a sequence corresponding to amino acids 534-833 of human IFT88 (NP_783195.2).
Sequence:	GLTYEKLNRL DEALDCFLKL HAILRNSAEV LYQIANIYEL MENPSQAI EW LMQVSVIPT DPQVLSKLGE LYDREGDKSQ AFQYYYESYR YFPCNIEVIE WLGAYYIDTQ FWEKAIQYFE RASLIQPTQV KWQLMVASCF RRSNGYQKAL DTYKDTHRKF PENVECLRFL VRLCTDLGLK DAQEYARKLK RLEKMKEIRE QRIKSGRDGS GSGRGKREGS ASGDSGQNY S ASSKGERLSA RLRALPGTNE PYESSNKEI DASYVDPLGP QIERPKTAAK KRIDEDDFAD EELGDDLLPE
Isotype:	IgG
Cross-Reactivity:	Human, Mouse
Characteristics:	Polyclonal Antibodies
Purification:	Affinity purification

Target Details

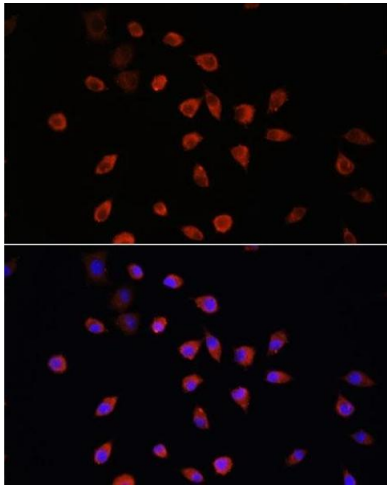
Target:	IFT88
Alternative Name:	IFT88 (IFT88 Products)
Background:	<p>This gene encodes a member of the tetratrico peptide repeat (TPR) family. Mutations of a similar gene in mouse can cause polycystic kidney disease. Two transcript variants encoding distinct isoforms have been identified for this gene.,IFT88,D13S1056E,DAF19,TG737,TTC10,hTg737,Epigenetics & Nuclear Signaling,Cell Biology & Developmental Biology,Cell Cycle,Centrosome,IFT88</p>
Molecular Weight:	92 kDa/93 kDa/94 kDa
Gene ID:	8100
UniProt:	Q13099
Pathways:	Hedgehog Signaling , Sensory Perception of Sound

Application Details

Application Notes:	WB,1:500 - 1:2000,IF,1:50 - 1:200
Restrictions:	For Research Use only

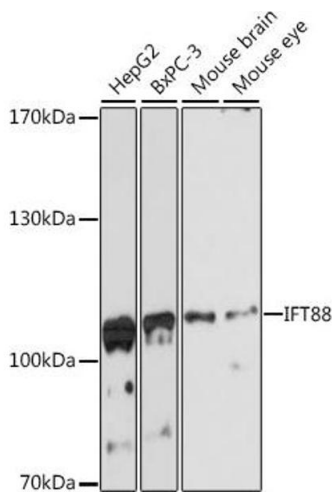
Handling

Format:	Liquid
Buffer:	PBS with 0.02 % sodium azide,50 % glycerol, pH 7.3.
Preservative:	Sodium azide
Precaution of Use:	This product contains Sodium azide: a POISONOUS AND HAZARDOUS SUBSTANCE which should be handled by trained staff only.
Storage:	-20 °C
Storage Comment:	Store at -20°C. Avoid freeze / thaw cycles.



Immunofluorescence

Image 1. Immunofluorescence analysis of L929 cells using IFT88 antibody (ABIN6131798, ABIN6142226, ABIN6142227 and ABIN6216899) at dilution of 1:100. Blue: DAPI for nuclear staining.



Western Blotting

Image 2. Western blot analysis of extracts of various cell lines, using IFT88 antibody (ABIN6131798, ABIN6142226, ABIN6142227 and ABIN6216899) at 1:3000 dilution. Secondary antibody: HRP Goat Anti-Rabbit IgG (H+L) (ABIN1684268 and ABIN3020597) at 1:10000 dilution. Lysates/proteins: 25 µg per lane. Blocking buffer: 3 % nonfat dry milk in TBST. Detection: ECL Basic Kit (RM00020). Exposure time: 90s.