

Datasheet for ABIN6142255
anti-IGFBP4 antibody (AA 22-258)



[Go to Product page](#)

5 Images

Overview

Quantity:	100 µL
Target:	IGFBP4
Binding Specificity:	AA 22-258
Reactivity:	Human
Host:	Rabbit
Clonality:	Polyclonal
Conjugate:	This IGFBP4 antibody is un-conjugated
Application:	Western Blotting (WB), Immunohistochemistry (IHC), Immunofluorescence (IF)

Product Details

Immunogen:	Recombinant fusion protein containing a sequence corresponding to amino acids 22-258 of human IGFBP4 (NP_001543.2).
Sequence:	DEAIHCPPCS EEKLARCRPP VGCEELVREP GCGCCATCAL GLGMPCGVYT PRCGSGLR PPRGVEKPLH TLMHGQGVCM ELAEIEAIQE SLQPSDKDEG DHPNNSFSPC SAHRRRCLQK HFAKIRDRST SGGKMKVNGA PREDARVPVQ GSCQSELHRA LERLAASQSR THEDLYIPI PNCDRNGNFH PKQCHPALDG QRGKWCVDR KTGVKLPGGL EPKGELDCHQ LADSFRE
Isotype:	IgG
Cross-Reactivity:	Human, Mouse, Rat
Characteristics:	Polyclonal Antibodies
Purification:	Affinity purification

Target Details

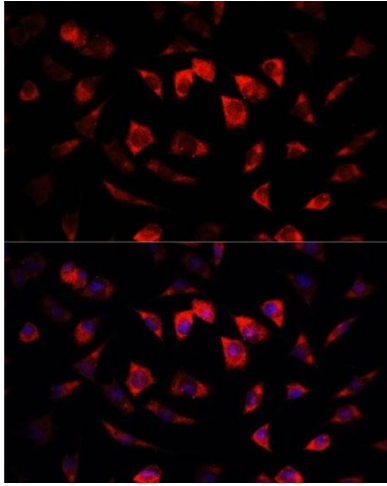
Target:	IGFBP4
Alternative Name:	IGFBP4 (IGFBP4 Products)
Background:	<p>This gene is a member of the insulin-like growth factor binding protein (IGFBP) family and encodes a protein with an IGFBP domain and a thyroglobulin type-I domain. The protein binds both insulin-like growth factors (IGFs) I and II and circulates in the plasma in both glycosylated and non-glycosylated forms. Binding of this protein prolongs the half-life of the IGFs and alters their interaction with cell surface receptors.,IGFBP4,BP-4,HT29-IGFBP,IBP4,IGFBP-4,Signal Transduction,Cell Biology & Developmental Biology,Cytoskeleton,Extracellular Matrix,Bone,Growth factor,Cardiovascular,Angiogenesis,IGFBP4</p>
Molecular Weight:	17 kDa/27 kDa
Gene ID:	3487
UniProt:	P22692
Pathways:	WNT Signaling , Myometrial Relaxation and Contraction , Regulation of Carbohydrate Metabolic Process

Application Details

Application Notes:	WB,1:500 - 1:2000,IHC,1:50 - 1:100,IF,1:50 - 1:200
Comment:	HIGH QUALITY
Restrictions:	For Research Use only

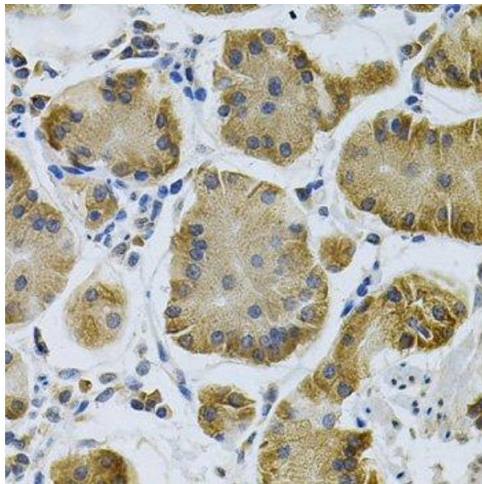
Handling

Format:	Liquid
Buffer:	PBS with 0.02 % sodium azide,50 % glycerol, pH 7.3.
Preservative:	Sodium azide
Precaution of Use:	This product contains Sodium azide: a POISONOUS AND HAZARDOUS SUBSTANCE which should be handled by trained staff only.
Storage:	-20 °C
Storage Comment:	Store at -20°C. Avoid freeze / thaw cycles.



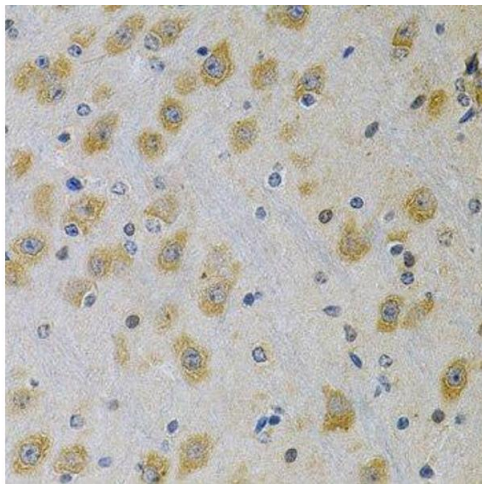
Immunofluorescence

Image 1. Immunofluorescence analysis of L929 cells using IGFBP4 antibody (ABIN6130488, ABIN6142255, ABIN6142256 and ABIN6219173) at dilution of 1:100. Blue: DAPI for nuclear staining.



Immunohistochemistry (Paraffin-embedded Sections)

Image 2. Immunohistochemistry of paraffin-embedded human stomach using IGFBP4 Antibody.



Immunohistochemistry (Paraffin-embedded Sections)

Image 3. Immunohistochemistry of paraffin-embedded rat brain using IGFBP4 Antibody.

Please check the [product details page](#) for more images. Overall 5 images are available for ABIN6142255.