



[Go to Product page](#)

Datasheet for ABIN6142265
anti-IGFL3 antibody (AA 25-125)

1 Image

Overview

Quantity:	100 µL
Target:	IGFL3
Binding Specificity:	AA 25-125
Reactivity:	Human
Host:	Rabbit
Clonality:	Polyclonal
Conjugate:	This IGFL3 antibody is un-conjugated
Application:	Western Blotting (WB)

Product Details

Immunogen:	Recombinant fusion protein containing a sequence corresponding to amino acids 25-125 of human IGFL3 (NP_997276.1).
Sequence:	TTDAPVGSGL WLCQPTPRCG NKIYNPSEQC CYDDAILSLK ETRRCGSTCT FWPCFELCCP ESFGPQQKFL VKLRVLGMKS QCHLSPIRSR CTRNRRHVLY P
Isotype:	IgG
Cross-Reactivity:	Mouse
Characteristics:	Polyclonal Antibodies
Purification:	Affinity purification

Target Details

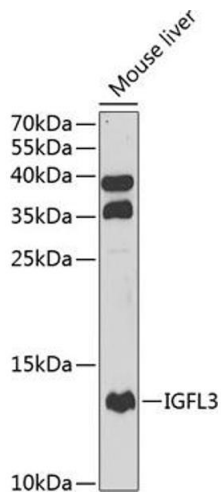
Target:	IGFL3
Alternative Name:	IGFL3 (IGFL3 Products)
Background:	IGFL3 belongs to the insulin-like growth factor (IGF, see MIM 147440) family of signaling molecules that play critical roles in cellular energy metabolism and in growth and development, especially prenatal growth (Emtage et al., 2006 [PubMed 16890402]). [supplied by OMIM, Mar 2008],IGFL3,UNQ483,IGFL3
Molecular Weight:	14 kDa
Gene ID:	388555
UniProt:	Q6UXB1

Application Details

Application Notes:	WB,1:500 - 1:2000
Restrictions:	For Research Use only

Handling

Format:	Liquid
Buffer:	PBS with 0.02 % sodium azide,50 % glycerol, pH 7.3.
Preservative:	Sodium azide
Precaution of Use:	This product contains Sodium azide: a POISONOUS AND HAZARDOUS SUBSTANCE which should be handled by trained staff only.
Storage:	-20 °C
Storage Comment:	Store at -20°C. Avoid freeze / thaw cycles.



Western Blotting

Image 1. Western blot analysis of extracts of mouse liver, using IGFL3 antibody (ABIN6133430, ABIN6142265, ABIN6142266 and ABIN6222975) at 1:1000 dilution. Secondary antibody: HRP Goat Anti-Rabbit IgG (H+L) (ABIN1684268 and ABIN3020597) at 1:10000 dilution. Lysates/proteins: 25 μ g per lane. Blocking buffer: 3 % nonfat dry milk in TBST. Detection: ECL Basic Kit (RM00020). Exposure time: 90s.