

Datasheet for ABIN6142320
anti-IL17F antibody (AA 31-163)



[Go to Product page](#)

1 Image

Overview

Quantity:	100 µL
Target:	IL17F
Binding Specificity:	AA 31-163
Reactivity:	Human
Host:	Rabbit
Clonality:	Polyclonal
Conjugate:	This IL17F antibody is un-conjugated
Application:	Western Blotting (WB)

Product Details

Immunogen:	Recombinant fusion protein containing a sequence corresponding to amino acids 31-163 of human IL17F (NP_443104.1).
Sequence:	RKIPKVGHTF FQKPESCPPV PGGSMKLDIG IINENQRVSM SRNIESRSTS PWNVTVTWDP NRYPSEVVQA QCRNLGCINA QGKEDISMNS VPIQQETLVV RRRKHQGCSVS FQLEKVLVTV GCTCVTPVIH HVQ
Isotype:	IgG
Cross-Reactivity:	Human, Mouse
Characteristics:	Polyclonal Antibodies

Target Details

Target:	IL17F
---------	-------

Target Details

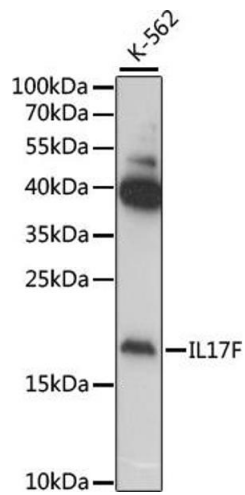
Alternative Name:	IL17F (IL17F Products)
Background:	The protein encoded by this gene is a cytokine that shares sequence similarity with IL17. This cytokine is expressed by activated T cells, and has been shown to stimulate the production of several other cytokines, including IL6, IL8, and CSF2/GM-CSF. This cytokine is also found to inhibit the angiogenesis of endothelial cells and induce endothelial cells to produce IL2, TGFB1/TGFB, and monocyte chemoattractant protein-1.,IL17F,CANDF6,IL-17F,ML-1,ML1,Cancer,Invasion and Metastasis,Immunology & Inflammation,Cytokines,Interleukins,Cell Intrinsic Innate Immunity Signaling Pathway,Cardiovascular,Angiogenesis,Angiogenic inhibitory factors,IL17F
Molecular Weight:	18 kDa
Gene ID:	112744
UniProt:	Q96PD4
Pathways:	Cellular Response to Molecule of Bacterial Origin, Positive Regulation of Endopeptidase Activity

Application Details

Application Notes:	WB,1:500 - 1:2000
Restrictions:	For Research Use only

Handling

Format:	Liquid
Buffer:	PBS with 0.02 % sodium azide,50 % glycerol, pH 7.3.
Preservative:	Sodium azide
Precaution of Use:	This product contains Sodium azide: a POISONOUS AND HAZARDOUS SUBSTANCE which should be handled by trained staff only.
Storage:	-20 °C
Storage Comment:	Store at -20°C. Avoid freeze / thaw cycles.



Western Blotting

Image 1. Western blot analysis of extracts of various cell lines, using IL17F antibody (ABIN6128141, ABIN6142320, ABIN6142321 and ABIN6222150) at 1:1000 dilution. Secondary antibody: HRP Goat Anti-Rabbit IgG (H+L) (ABIN1684268 and ABIN3020597) at 1:10000 dilution. Lysates/proteins: 25 µg per lane. Blocking buffer: 3 % nonfat dry milk in TBST. Detection: ECL Basic Kit (RM00020). Exposure time: 60s.