

Datasheet for ABIN6142368
anti-IL-24 antibody (AA 52-140)[Go to Product page](#)

2 Images

Overview

Quantity:	100 µL
Target:	IL-24 (IL24)
Binding Specificity:	AA 52-140
Reactivity:	Human
Host:	Rabbit
Clonality:	Polyclonal
Conjugate:	This IL-24 antibody is un-conjugated
Application:	Western Blotting (WB), Immunohistochemistry (IHC)

Product Details

Immunogen:	Recombinant fusion protein containing a sequence corresponding to amino acids 52-140 of human IL24 (NP_001172085.1).
Sequence:	GQEFHFGPCQ VKGVVPQKLW EAFWAVKDTM QAQDNITSAR LLQQEVLQNV SDAESCYLVH TLLEFYLKTV FKNYHNRTVE VRTLKSFST
Isotype:	IgG
Cross-Reactivity:	Mouse, Rat
Characteristics:	Polyclonal Antibodies

Target Details

Target:	IL-24 (IL24)
---------	--------------

Target Details

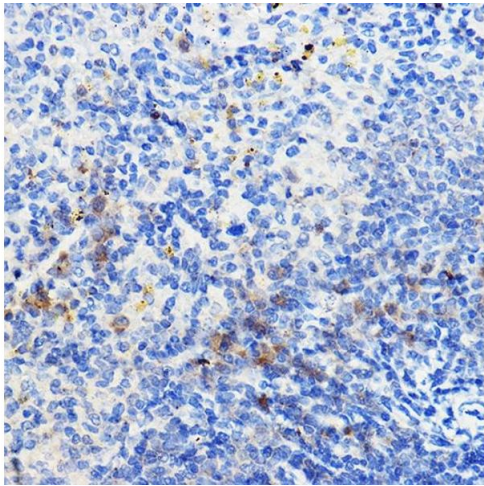
Alternative Name:	IL24 (IL24 Products)
Background:	<p>This gene encodes a member of the IL10 family of cytokines. It was identified as a gene induced during terminal differentiation in melanoma cells. The protein encoded by this gene can induce apoptosis selectively in various cancer cells. Overexpression of this gene leads to elevated expression of several GADD family genes, which correlates with the induction of apoptosis. The phosphorylation of mitogen-activated protein kinase 14 (MAPK7/P38), and heat shock 27 kDa protein 1 (HSPB2/HSP27) are found to be induced by this gene in melanoma cells, but not in normal immortal melanocytes. Alternatively spliced transcript variants encoding distinct isoforms have been reported.,IL24,C49A,FISP,IL10B,MDA7,MOB5,ST16,Cancer,Tumor immunology,Cell Biology & Developmental Biology,Apoptosis,Immunology & Inflammation,Cytokines,Interleukins,Cell Intrinsic Innate Immunity Signaling Pathway,IL24</p>
Molecular Weight:	7 kDa/17 kDa/23 kDa
Gene ID:	11009
UniProt:	Q13007
Pathways:	Cellular Response to Molecule of Bacterial Origin , Positive Regulation of Endopeptidase Activity , Autophagy

Application Details

Application Notes:	WB,1:500 - 1:2000,IHC,1:50 - 1:200
Restrictions:	For Research Use only

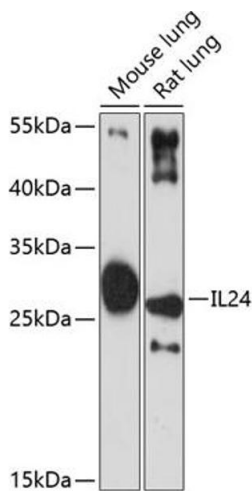
Handling

Format:	Liquid
Buffer:	PBS with 0.02 % sodium azide,50 % glycerol, pH 7.3.
Preservative:	Sodium azide
Precaution of Use:	This product contains Sodium azide: a POISONOUS AND HAZARDOUS SUBSTANCE which should be handled by trained staff only.
Storage:	-20 °C
Storage Comment:	Store at -20°C. Avoid freeze / thaw cycles.



Immunohistochemistry

Image 1. Immunohistochemistry of paraffin-embedded mouse spleen using IL24 Rabbit pAb (ABIN6128082, ABIN6142368, ABIN6142369 and ABIN6219012) at dilution of 1:100 (40x lens). Perform high pressure antigen retrieval with 10 mM citrate buffer pH 6.0 before commencing with IHC staining protocol.



Western Blotting

Image 2. Western blot analysis of extracts of various cell lines, using IL24 antibody (ABIN6128082, ABIN6142368, ABIN6142369 and ABIN6219012) at 1:3000 dilution. Secondary antibody: HRP Goat Anti-Rabbit IgG (H+L) (ABIN1684268 and ABIN3020597) at 1:10000 dilution. Lysates/proteins: 25 µg per lane. Blocking buffer: 3 % nonfat dry milk in TBST. Detection: ECL Basic Kit (RM00020). Exposure time: 90s.