

Datasheet for ABIN6142441
anti-INCENP antibody (AA 785-914)[Go to Product page](#)

1 Image

Overview

Quantity:	100 µL
Target:	INCENP
Binding Specificity:	AA 785-914
Reactivity:	Human
Host:	Rabbit
Clonality:	Polyclonal
Conjugate:	This INCENP antibody is un-conjugated
Application:	Western Blotting (WB)

Product Details

Immunogen:	Recombinant fusion protein containing a sequence corresponding to amino acids 785-914 of human INCENP (NP_064623.2).
Sequence:	ALNVTVDVQS PACTSYQMTP QGHRAPPKIN PDNYGMDLNS DDSTDDEAHP RKPIPTWARG TPLSQAIHQ YYHPPNLEL FGTLPLDLE DIFKSKPRY HKRTSSAVWN SPPLQGARVP SSLAYSLKKH
Isotype:	IgG
Cross-Reactivity:	Human, Rat
Characteristics:	Polyclonal Antibodies

Target Details

Target:	INCENP
---------	--------

Target Details

Alternative Name:	INCENP (INCENP Products)
Background:	<p>In mammalian cells, 2 broad groups of centromere-interacting proteins have been described: constitutively binding centromere proteins and 'passenger,' or transiently interacting, proteins (reviewed by Choo, 1997). The constitutive proteins include CENPA (centromere protein A; MIM 117139), CENPB (MIM 117140), CENPC1 (MIM 117141), and CENPD (MIM 117142). The term 'passenger proteins' encompasses a broad collection of proteins that localize to the centromere during specific stages of the cell cycle (Earnshaw and Mackay, 1994 [PubMed 8088460]). These include CENPE (MIM 117143); MCAK (MIM 604538); KID (MIM 603213); cytoplasmic dynein (e.g., MIM 600112); CliPs (e.g., MIM 179838); and CENPF/mitosin (MIM 600236). The inner centromere proteins (INCENPs) (Earnshaw and Cooke, 1991 [PubMed 1860899]), the initial members of the passenger protein group, display a broad localization along chromosomes in the early stages of mitosis but gradually become concentrated at centromeres as the cell cycle progresses into mid-metaphase. During telophase, the proteins are located within the midbody in the intercellular bridge, where they are discarded after cytokinesis (Cutts et al., 1999 [PubMed 10369859]).[supplied by OMIM, Mar 2008],INCENP,Epigenetics & Nuclear Signaling,Cell Biology & Developmental Biology,Cell Cycle,Centromere,INCENP</p>
Molecular Weight:	104 kDa/105 kDa
Gene ID:	3619
UniProt:	Q9NQS7
Pathways:	Cell Division Cycle

Application Details

Application Notes:	WB,1:500 - 1:2000
Comment:	HIGH QUALITY
Restrictions:	For Research Use only

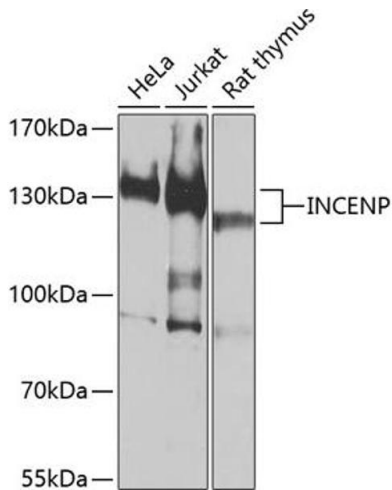
Handling

Format:	Liquid
Buffer:	PBS with 0.02 % sodium azide,50 % glycerol, pH 7.3.
Preservative:	Sodium azide

Handling

Precaution of Use:	This product contains Sodium azide: a POISONOUS AND HAZARDOUS SUBSTANCE which should be handled by trained staff only.
Storage:	-20 °C
Storage Comment:	Store at -20°C. Avoid freeze / thaw cycles.

Images



Western Blotting

Image 1. Western blot analysis of extracts of various cell lines, using INCENP antibody (ABIN6130494, ABIN6142441, ABIN6142442 and ABIN6213904) at 1:1000 dilution. Secondary antibody: HRP Goat Anti-Rabbit IgG (H+L) (ABIN1684268 and ABIN3020597) at 1:10000 dilution. Lysates/proteins: 25 µg per lane. Blocking buffer: 3 % nonfat dry milk in TBST. Detection: ECL Basic Kit (RM00020). Exposure time: 30s.