



[Go to Product page](#)

Datasheet for ABIN6142455  
**anti-ING5 antibody (AA 1-220)**

2 Images

Overview

Quantity:	100 µL
Target:	ING5
Binding Specificity:	AA 1-220
Reactivity:	Human
Host:	Rabbit
Clonality:	Polyclonal
Conjugate:	This ING5 antibody is un-conjugated
Application:	Western Blotting (WB), Immunofluorescence (IF)

Product Details

Immunogen:	Recombinant fusion protein containing a sequence corresponding to amino acids 1-220 of human ING5 (NP_115705.2).
Sequence:	MATAMYLEHY LDSIENLPCE LQRNFQLMRE LDQRTEKKA EIDILAAEYI STVKTLSPDQ RVERLQKIQN AYSKCKEYSD DKVQLAMQTY EMVDKHIRRL DADLARFEAD LKDKMEGSDF ESSGGRGLKK GRGQKEKRGSRGRGRRTSEE DTPKCKKHKHG GSEFTDTILS VHPSDVLDMP VDPNEPTYCL CHQVSYGEMI GCDNPDCPIE WFHFACVDLT
Isotype:	IgG
Cross-Reactivity:	Human
Characteristics:	Polyclonal Antibodies

## Target Details

---

Target:	ING5
Alternative Name:	ING5 ( <a href="#">ING5 Products</a> )
Background:	<p>This gene encodes a tumor suppressor protein that inhibits cell growth and induces apoptosis. This protein contains a PHD-type zinc finger. It interacts with tumor suppressor p53 and p300, a component of the histone acetyl transferase complex, suggesting a role in transcriptional regulation. Alternative splicing and the use of multiple promoters and 3' ends results in multiple transcript variants.,ING5,p28ING5,Epigenetics &amp; Nuclear Signaling,Cancer,Tumor suppressors,ING5</p>
Molecular Weight:	25 kDa/27 kDa
Gene ID:	84289
UniProt:	<a href="#">Q8WYH8</a>
Pathways:	<a href="#">Chromatin Binding</a>

## Application Details

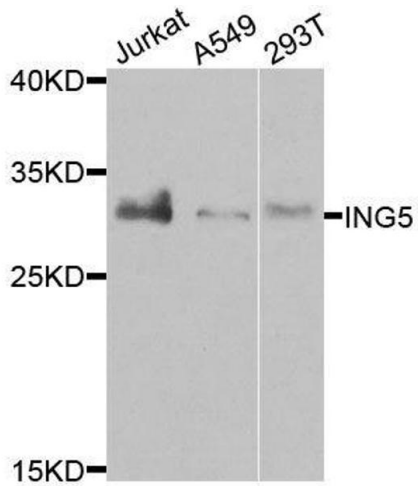
---

Application Notes:	WB,1:500 - 1:2000,IF,1:50 - 1:100
Comment:	HIGH QUALITY
Restrictions:	For Research Use only

## Handling

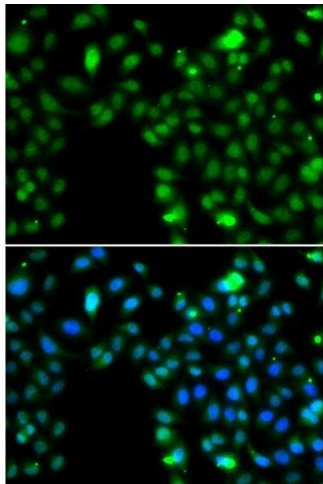
---

Format:	Liquid
Buffer:	PBS with 0.02 % sodium azide,50 % glycerol, pH 7.3.
Preservative:	Sodium azide
Precaution of Use:	This product contains Sodium azide: a POISONOUS AND HAZARDOUS SUBSTANCE which should be handled by trained staff only.
Storage:	-20 °C
Storage Comment:	Store at -20°C. Avoid freeze / thaw cycles.



### Western Blotting

**Image 1.** Western blot analysis of extracts of various cell lines, using ING5 antibody.



### Immunofluorescence

**Image 2.** Immunofluorescence analysis of MCF-7 cells using ING5 antibody.