



[Go to Product page](#)

Datasheet for ABIN6142457

anti-Inhibin alpha antibody (AA 19-366)

3 Images

Overview

Quantity:	100 µL
Target:	Inhibin alpha (INHA)
Binding Specificity:	AA 19-366
Reactivity:	Human
Host:	Rabbit
Clonality:	Polyclonal
Conjugate:	This Inhibin alpha antibody is un-conjugated
Application:	Western Blotting (WB), Immunohistochemistry (IHC)

Product Details

Immunogen:	Recombinant fusion protein containing a sequence corresponding to amino acids 19-366 of human INHA (NP_002182.1).
Sequence:	CQGLELAREL VLAKVRALFL DALGPPAVTR EGGDPGVRRL PRRHALGGFT HRGSEPEEEE DVSQAILFPA TDASCEDKSA ARGLAQEAE GLFRYMFRRPS QHTRSRQVTS AQLWFHTGLD RQGTAA SNSS EPLLGLLALS PGGPVAVPMS LGHAPPHWAV LHLATSALS LTHPVLVLLL RCPLCTCSAR PEATPFLVAH TRTRPPSGGE RARRSTPLMS WPWSPSALRL LQRPPEEPAA HANCHRVALN ISFQELGWER WIVYPPSFIF HYCHGGCGLH IPPNLSLPVP GAPPTPAQPY SLLPGAQPC AALPGTMRPL HVRTTSDGGY SFKYETV PNL LTQHCACI
Isotype:	IgG
Cross-Reactivity:	Mouse, Rat
Characteristics:	Polyclonal Antibodies

Target Details

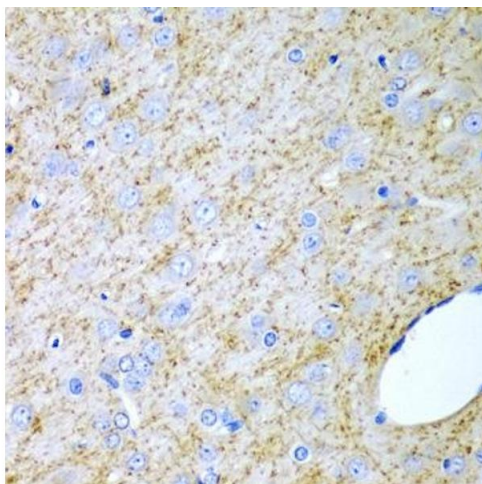
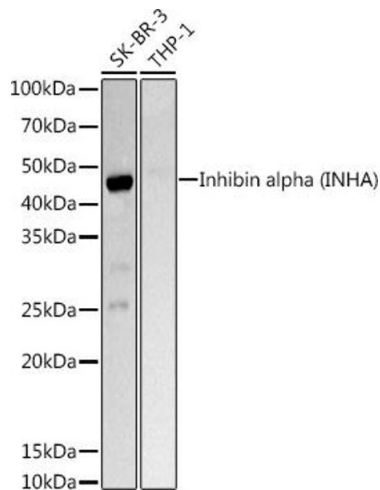
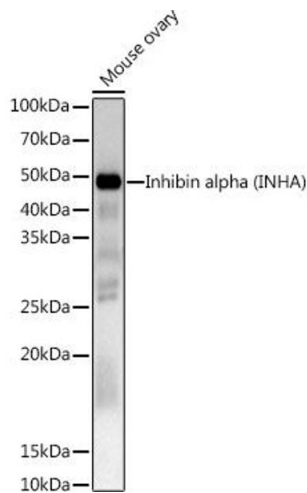
Target:	Inhibin alpha (INHA)
Alternative Name:	INHA (INHA Products)
Background:	<p>This gene encodes a member of the TGF-beta (transforming growth factor-beta) superfamily of proteins. The encoded preproprotein is proteolytically processed to generate multiple peptide products, including the alpha subunit of the inhibin A and B protein complexes. These complexes negatively regulate follicle stimulating hormone secretion from the pituitary gland. Inhibins have also been implicated in regulating numerous cellular processes including cell proliferation, apoptosis, immune response and hormone secretion. Mutations in this gene may be associated with male infertility and premature ovarian failure in female human patients.,INHA,Cancer,Signal Transduction,Cell Biology & Developmental Biology,Apoptosis,Growth factor,Immunology & Inflammation,Cytokines,INHA</p>
Molecular Weight:	39 kDa
Gene ID:	3623
UniProt:	P05111
Pathways:	Peptide Hormone Metabolism , Hormone Activity , Negative Regulation of Hormone Secretion

Application Details

Application Notes:	WB,1:500 - 1:2000,IHC,1:50 - 1:200
Comment:	HIGH QUALITY
Restrictions:	For Research Use only

Handling

Format:	Liquid
Buffer:	PBS with 0.02 % sodium azide,50 % glycerol, pH 7.3.
Preservative:	Sodium azide
Precaution of Use:	This product contains Sodium azide: a POISONOUS AND HAZARDOUS SUBSTANCE which should be handled by trained staff only.
Storage:	-20 °C
Storage Comment:	Store at -20°C. Avoid freeze / thaw cycles.



Western Blotting

Image 1. Western blot analysis of extracts of Mouse ovary, using Inhibin alpha (INHA) Rabbit pAb antibody (ABIN6128093, ABIN6142457, ABIN6142458 and ABIN6218833) at 1:1000 dilution. Secondary antibody: HRP Goat Anti-Rabbit IgG (H+L) (ABIN1684268 and ABIN3020597) at 1:10000 dilution. Lysates/proteins: 25 µg per lane. Blocking buffer: 3% nonfat dry milk in TBST. Detection: ECL Basic Kit (RM00020). Exposure time: 180s.

Western Blotting

Image 2. Western blot analysis of extracts of various cell lines, using Inhibin alpha (INHA) Rabbit pAb antibody (ABIN6128093, ABIN6142457, ABIN6142458 and ABIN6218833) at 1:1000 dilution. Secondary antibody: HRP Goat Anti-Rabbit IgG (H+L) (ABIN1684268 and ABIN3020597) at 1:10000 dilution. Lysates/proteins: 25 µg per lane. Blocking buffer: 3% nonfat dry milk in TBST. Detection: ECL Basic Kit (RM00020). Exposure time: 1s.

Immunohistochemistry

Image 3. Immunohistochemistry of paraffin-embedded rat brain using Inhibin alpha (INHA) antibody (ABIN6128093, ABIN6142457, ABIN6142458 and ABIN6218833) at dilution of 1:200 (40x lens). Perform microwave antigen retrieval with 10 mM PBS buffer pH 7.2 before commencing with IHC staining protocol.