

Datasheet for ABIN6142469
anti-INPP5A antibody (AA 10-200)



[Go to Product page](#)

1 Image

Overview

Quantity:	100 µL
Target:	INPP5A
Binding Specificity:	AA 10-200
Reactivity:	Human
Host:	Rabbit
Clonality:	Polyclonal
Conjugate:	This INPP5A antibody is un-conjugated
Application:	Western Blotting (WB)

Product Details

Immunogen:	Recombinant fusion protein containing a sequence corresponding to amino acids 10-200 of human INPP5A (NP_005530.3).
Sequence:	TAVLLVTANV GSLFDDPENL QKNWLREFYQ VVHTHKPHFM ALHCQEFGGK NYEASMSHVD KFKVCELLSSD AMKEYNRARV YLDENYKSQE HFTALGSFYF LHESLKNIYQ FDFKAKKYRK VAGKEIYSDT LESTPMLEKE KFPQDYFPEC KWSRKGFI RT RWCIADCAFD LVNIHLFHDA SNLVAWETSP S
Isotype:	IgG
Cross-Reactivity:	Mouse, Rat
Characteristics:	Polyclonal Antibodies

Target Details

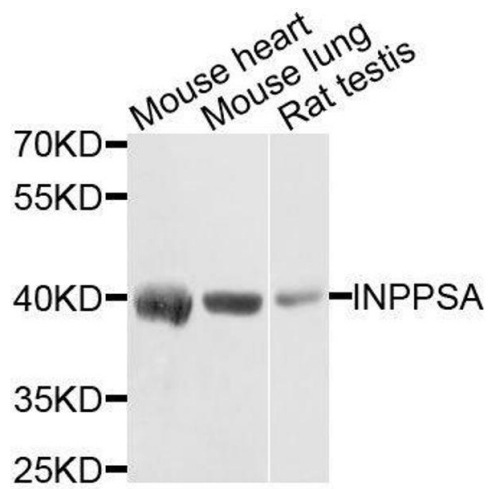
Target:	INPP5A
Alternative Name:	INPP5A (INPP5A Products)
Background:	The protein encoded by this gene is a membrane-associated type I inositol 1,4,5-trisphosphate (InsP3) 5-phosphatase. InsP3 5-phosphatases hydrolyze Ins(1,4,5)P3, which mobilizes intracellular calcium and acts as a second messenger mediating cell responses to various stimulation.,INPP5A,5PTASE,Signal Transduction,INPP5A
Molecular Weight:	47 kDa
Gene ID:	3632
UniProt:	Q14642

Application Details

Application Notes:	WB,1:500 - 1:2000
Comment:	HIGH QUALITY
Restrictions:	For Research Use only

Handling

Format:	Liquid
Buffer:	PBS with 0.02 % sodium azide,50 % glycerol, pH 7.3.
Preservative:	Sodium azide
Precaution of Use:	This product contains Sodium azide: a POISONOUS AND HAZARDOUS SUBSTANCE which should be handled by trained staff only.
Storage:	-20 °C
Storage Comment:	Store at -20°C. Avoid freeze / thaw cycles.



Western Blotting

Image 1. Western blot analysis of extracts of various cell lines, using INPP5A antibody.