

Datasheet for ABIN6142475
anti-INPPL1 antibody (AA 100-310)



[Go to Product page](#)

1 Image

Overview

Quantity:	100 µL
Target:	INPPL1
Binding Specificity:	AA 100-310
Reactivity:	Human
Host:	Rabbit
Clonality:	Polyclonal
Conjugate:	This INPPL1 antibody is un-conjugated
Application:	Western Blotting (WB)

Product Details

Immunogen:	Recombinant fusion protein containing a sequence corresponding to amino acids 100-310 of human INPPL1 (NP_001558.3).
Sequence:	GLYAQPNQGL VCALLLPVEG EREPDPDDR DASDGEDEKP PLPPRSGSTS ISAPTGPSSP LPAPETPTAP AAESAPNGLS TVSHDYLKGS YGLDLEAVRG GASHLPHLTR TLATSCRRLH SEVDKVLVSL EILSKVFDQQ SSPMVTRLLQ QQNLPQTGEQ ELESVLKLS VLKDFLSGIQ KKALKALQDM SSTAPPAPQP STRKAKTIPV Q
Isotype:	IgG
Cross-Reactivity:	Human, Mouse, Rat
Characteristics:	Polyclonal Antibodies

Target Details

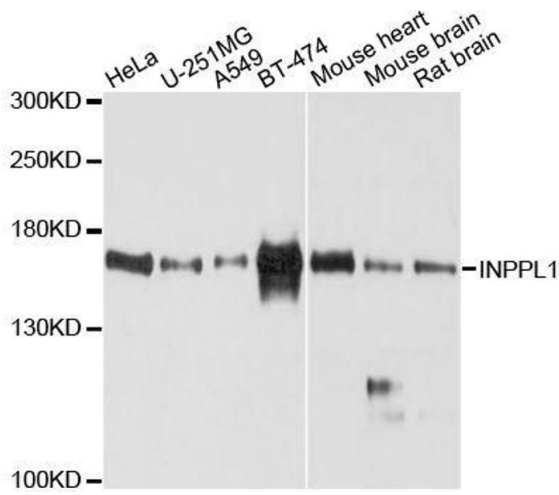
Target:	INPPL1
Alternative Name:	INPPL1 (INPPL1 Products)
Background:	<p>The protein encoded by this gene is an SH2-containing 5'-inositol phosphatase that is involved in the regulation of insulin function. The encoded protein also plays a role in the regulation of epidermal growth factor receptor turnover and actin remodelling. Additionally, this gene supports metastatic growth in breast cancer and is a valuable biomarker for breast cancer.,INPPL1,OPSMD,SHIP2,Cancer,Signal Transduction,Cell Biology & Developmental Biology,Cytoskeleton,Microfilaments,Growth factor,Endocrine & Metabolism,Lipid Metabolism,Insulin Receptor Signaling Pathway,Immunology & Inflammation,B Cell Receptor Signaling Pathway,Neuroscience,Cardiovascular,Angiogenesis,INPPL1</p>
Molecular Weight:	113 kDa/138 kDa
Gene ID:	3636
UniProt:	O15357
Pathways:	Platelet-derived growth Factor Receptor Signaling

Application Details

Application Notes:	WB,1:500 - 1:2000
Comment:	HIGH QUALITY
Restrictions:	For Research Use only

Handling

Format:	Liquid
Buffer:	PBS with 0.02 % sodium azide,50 % glycerol, pH 7.3.
Preservative:	Sodium azide
Precaution of Use:	This product contains Sodium azide: a POISONOUS AND HAZARDOUS SUBSTANCE which should be handled by trained staff only.
Storage:	-20 °C
Storage Comment:	Store at -20°C. Avoid freeze / thaw cycles.



Western Blotting

Image 1. Western blot analysis of extracts of various cell lines, using INPPL1 antibody.