

Datasheet for ABIN6142546
anti-ISCU antibody (AA 1-167)



[Go to Product page](#)

1 Image

Overview

Quantity:	100 µL
Target:	ISCU
Binding Specificity:	AA 1-167
Reactivity:	Human
Host:	Rabbit
Clonality:	Polyclonal
Conjugate:	This ISCU antibody is un-conjugated
Application:	Western Blotting (WB)

Product Details

Immunogen:	Recombinant fusion protein containing a sequence corresponding to amino acids 1-167 of human ISCU (NP_998760.1).
Sequence:	MAAAGAFRLR RAASALLRS PRLPARELSA PARLYHKKVW DHYENPRNVG SLDKTSKNVG TGLVGAPACG DVMKLQIQVD EKGKIVDARF KTFGCGSAIA SSSLATEWVK GKTVEEALTI KNTDIAKELC LPPVKLHCSM LAEDAIIKAAL ADYKLIKQEPK KGAEAKK
Isotype:	IgG
Cross-Reactivity:	Human
Characteristics:	Polyclonal Antibodies

Target Details

Target:	ISCU
---------	------

Target Details

Alternative Name: [ISCU \(ISCU Products\)](#)

Background: This gene encodes a component of the iron-sulfur (Fe-S) cluster scaffold. Fe-S clusters are cofactors that play a role in the function of a diverse set of enzymes, including those that regulate metabolism, iron homeostasis, and oxidative stress response. Alternative splicing results in transcript variants encoding different protein isoforms that localize either to the cytosol or to the mitochondrion. Mutations in this gene have been found in patients with hereditary myopathy with lactic acidosis. A disease-associated mutation in an intron may activate a cryptic splice site, resulting in the production of a splice variant encoding a putatively non-functional protein. A pseudogene of this gene is present on chromosome 1.,[ISCU](#),[2310020H20Rik](#),[HML](#),[ISU2](#),[NIFU](#),[NIFUN](#),[hnifU](#),[Signal Transduction](#),[Endocrine & Metabolism](#),[ISCU](#)

Molecular Weight: 15 kDa/17 kDa

Gene ID: 23479

UniProt: [Q9H1K1](#)

Application Details

Application Notes: WB,1:500 - 1:2000

Comment: HIGH QUALITY

Restrictions: For Research Use only

Handling

Format: Liquid

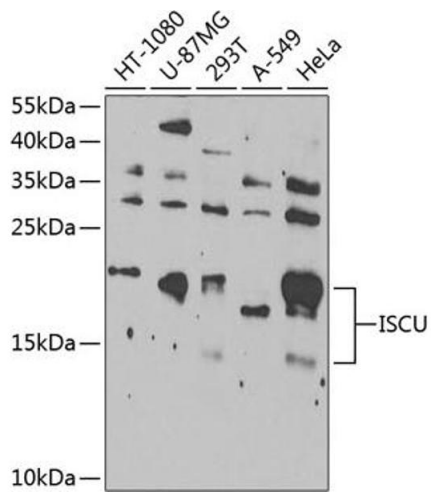
Buffer: PBS with 0.02 % sodium azide,50 % glycerol, pH 7.3.

Preservative: Sodium azide

Precaution of Use: This product contains Sodium azide: a POISONOUS AND HAZARDOUS SUBSTANCE which should be handled by trained staff only.

Storage: -20 °C

Storage Comment: Store at -20°C. Avoid freeze / thaw cycles.



Western Blotting

Image 1. Western blot analysis of extracts of various cell lines, using ISCU Antibody at 1:1000 dilution. Secondary antibody: HRP Goat Anti-Rabbit IgG (H+L) (ABIN1684268 and ABIN3020597) at 1:10000 dilution. Lysates/proteins: 25 µg per lane. Blocking buffer: 3% nonfat dry milk in TBST. Detection: ECL Enhanced Kit (RM00021). Exposure time: 10s.