

Datasheet for ABIN6142551
anti-IST1 antibody (AA 1-335)



[Go to Product page](#)

1 Image

Overview

Quantity:	100 µL
Target:	IST1
Binding Specificity:	AA 1-335
Reactivity:	Human
Host:	Rabbit
Clonality:	Polyclonal
Conjugate:	This IST1 antibody is un-conjugated
Application:	Western Blotting (WB)

Product Details

Immunogen:	Recombinant fusion protein containing a sequence corresponding to amino acids 1-335 of human IST1 (NP_001257906.1).
Sequence:	MLGSGFKAER LRVNLRVIN RLKLEKKKT ELAQKARKEI ADYLAAGKDE RARIRVEHII REDYLVEAME ILELYCDLLL ARFGLIQSMK ELDSGLAESV STLIWAAPRL QSEVAELKIV ADQLCAKYSK EYGKLCRTNQ IGTVNDRLMH KLSVEAPPKI LVERYLIEIA KNYNVPYEPD SVVMAEAPPG VETDLIDVGF TDDVKKGGPG RGGSGGFTAP VGGPDGTVPM PMPMPMPMPS ANTPFSYPLP KGPVDDINAD KNISSAQIVG PGPKEASAK LPSRPADNYD NFVLPPELPSV PDTLPTASAG ASTSASEDID FDDLRRFEE LKKKT
Isotype:	IgG
Cross-Reactivity:	Human, Mouse, Rat
Characteristics:	Polyclonal Antibodies

Target Details

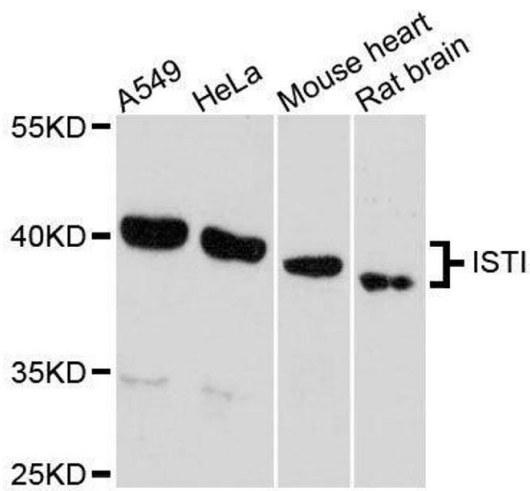
Target:	IST1
Alternative Name:	IST1 (IST1 Products)
Background:	This gene encodes a protein with MIT-interacting motifs that interacts with components of endosomal sorting complexes required for transport (ESCRT). ESCRT functions in vesicle budding, such as that which occurs during membrane abscission in cytokinesis. There is a pseudogene for this gene on chromosome 19. Alternatively spliced transcript variants encoding multiple isoforms have been observed for this gene.,IST1,OLC1,Cell Biology & Developmental Biology,Cell Cycle,Immunology & Inflammation,Cytokines,IST1
Molecular Weight:	23 kDa/36 kDa/39 kDa/41 kDa
Gene ID:	9798
UniProt:	P53990
Pathways:	Regulation of Cell Size

Application Details

Application Notes:	WB,1:500 - 1:2000
Comment:	HIGH QUALITY
Restrictions:	For Research Use only

Handling

Format:	Liquid
Buffer:	PBS with 0.02 % sodium azide,50 % glycerol, pH 7.3.
Preservative:	Sodium azide
Precaution of Use:	This product contains Sodium azide: a POISONOUS AND HAZARDOUS SUBSTANCE which should be handled by trained staff only.
Storage:	-20 °C
Storage Comment:	Store at -20°C. Avoid freeze / thaw cycles.



Western Blotting

Image 1. Western blot analysis of extracts of various cell lines, using IST1 antibody.