



[Go to Product page](#)

Datasheet for ABIN6142568  
**anti-ITGA8 antibody (AA 907-1000)**

1 Image

### Overview

|                      |                                      |
|----------------------|--------------------------------------|
| Quantity:            | 100 µL                               |
| Target:              | ITGA8                                |
| Binding Specificity: | AA 907-1000                          |
| Reactivity:          | Human                                |
| Host:                | Rabbit                               |
| Clonality:           | Polyclonal                           |
| Conjugate:           | This ITGA8 antibody is un-conjugated |
| Application:         | Western Blotting (WB)                |

### Product Details

|                   |  |
|-------------------|--|
| Immunogen:        | Recombinant fusion protein containing a sequence corresponding to amino acids 907-1000 of human ITGA8 (NP_003629.2). |
| Sequence:         | DVHVVEFHRQ SPAKILNCTN IECLQISCAV GRLEGGESAV LKVRSLWAH TFLQRKNDPY<br>ALASLVSFEV KKMPYTDQPA KLPEGSIVIK TSVI            |
| Isotype:          | IgG  |
| Cross-Reactivity: | Human, Mouse, Rat  |
| Characteristics:  | Polyclonal Antibodies  |

### Target Details

|         |       |
|---------|-------|
| Target: | ITGA8 |
|---------|-------|

## Target Details

---

Alternative Name: [ITGA8 \(ITGA8 Products\)](#)

---

Background: Integrins are heterodimeric transmembrane receptor proteins that mediate numerous cellular processes including cell adhesion, cytoskeletal rearrangement, and activation of cell signaling pathways. Integrins are composed of alpha and beta subunits. This gene encodes the alpha 8 subunit of the heterodimeric integrin alpha8beta1 protein. The encoded protein is a single-pass type 1 membrane protein that contains multiple FG-GAP repeats. This repeat is predicted to fold into a beta propeller structure. This gene regulates the recruitment of mesenchymal cells into epithelial structures, mediates cell-cell interactions, and regulates neurite outgrowth of sensory and motor neurons. The integrin alpha8beta1 protein thus plays an important role in wound-healing and organogenesis. Mutations in this gene have been associated with renal hypodysplasia/aplasia-1 (RHDA1) and with several animal models of chronic kidney disease. Alternate splicing results in multiple transcript variants encoding distinct isoforms.,ITGA8,Signal Transduction,PI3K-Akt Signaling Pathway,MAPK-Erk Signaling Pathway,Cell Biology & Developmental Biology,Cell Adhesion,Cytoskeleton,ITGA8

---

Molecular Weight: 117 kDa

---

Gene ID: 8516

---

UniProt: [P53708](#)

---

## Application Details

---

Application Notes: WB,1:500 - 1:2000

---

Comment: HIGH QUALITY

---

Restrictions: For Research Use only

---

## Handling

---

Format: Liquid

---

Buffer: PBS with 0.02 % sodium azide,50 % glycerol, pH 7.3.

---

Preservative: Sodium azide

---

Precaution of Use: This product contains Sodium azide: a POISONOUS AND HAZARDOUS SUBSTANCE which should be handled by trained staff only.

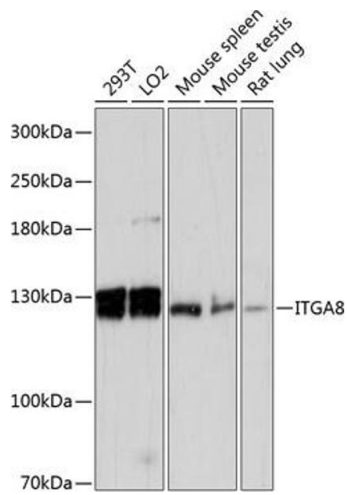
---

Storage: -20 °C

---

Storage Comment: Store at -20°C. Avoid freeze / thaw cycles.

---



### Western Blotting

**Image 1.** Western blot analysis of extracts of various cell lines, using ITG antibody (ABIN6133034, ABIN6142568, ABIN6142569 and ABIN6216902) at 1:3000 dilution. Secondary antibody: HRP Goat Anti-Rabbit IgG (H+L) (ABIN1684268 and ABIN3020597) at 1:10000 dilution. Lysates/proteins: 25 µg per lane. Blocking buffer: 3 % nonfat dry milk in TBST. Detection: ECL Basic Kit (RM00020). Exposure time: 10s.