



[Go to Product page](#)

Datasheet for ABIN6142601

## anti-ITLN1/Omentin antibody (AA 19-313)

### 4 Images

#### Overview

Quantity:	100 µL
Target:	ITLN1/Omentin (ITLN1)
Binding Specificity:	AA 19-313
Reactivity:	Human
Host:	Rabbit
Clonality:	Polyclonal
Conjugate:	This ITLN1/Omentin antibody is un-conjugated
Application:	Western Blotting (WB), Immunohistochemistry (IHC), Immunofluorescence (IF)

#### Product Details

Immunogen:	Recombinant fusion protein containing a sequence corresponding to amino acids 19-313 of human ITLN1 (NP_060095.2).
Sequence:	TDEANTYFKE WTCSSSPSLP RSCKEIKDEC PSAFDGLYFL RTENGVIIYQT FCDMTSGGGG WTLVASVHEN DMRGKCTVGD RWSSQQGSKA VYPEGDGNWA NYNTFGSAEA ATSDDYKNPG YYDIQAKDLG IWHVPNKSPM QHWRNSSLLR YRTDTGFLQT LGHNLFGIYQ KYPVKYGEKG CWTDNGPVI VVYDFGDAQK TASYSPYGQ REFTAGFVQF RVFNNERAAN ALCAGMRVTG CNTEHHCIGG GGYFPEASPQ QCGDFSGFDW SGYGTHVGYS SSREITEAAV LLFYR
Isotype:	IgG
Cross-Reactivity:	Mouse, Rat
Characteristics:	Polyclonal Antibodies

## Target Details

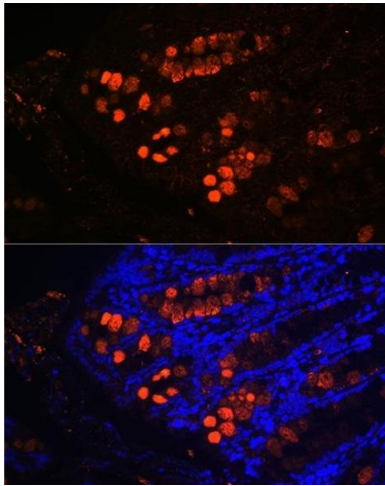
Target:	ITLN1/Omentin (ITLN1)
Alternative Name:	ITLN1 ( <a href="#">ITLN1 Products</a> )
Background:	<p>Intelectin-1(ITLN1) is a secreted protein and contains 1 fibrinogen C-terminal domain. Intelectin-1 is a 40 kDaCa-dependent galactofuranose-binding lectin that is not a C-type lectin. It is expressed on multiple cell typesand appears to participate in insulin signaling and microbe recognition. The protein has no effect on basalglucose uptake but enhances insulin-stimulated glucose uptake in adipocytes. It increases AKT phosphorylationin the absence and presence of insulin and it may play a role in the defense systemagainst microorganisms. Italso may specifically recognize carbohydrate chains of pathogens and bacterial components containinggalactofuranosyl residues, in a calcium-dependent manner.,ITLN1,HL-1,HL1,INTL,ITLN,LFR,hIntL,omentin,Cancer,Signal Transduction,Endocrine &amp; Metabolism,Lipid Metabolism,Cardiovascular,Blood,Lipids,Adipose Related,ITLN1</p>
Molecular Weight:	34 kDa
Gene ID:	55600
UniProt:	<a href="#">Q8WWA0</a>

## Application Details

Application Notes:	WB,1:500 - 1:2000,IHC,1:50 - 1:200,IF,1:50 - 1:200
Comment:	HIGH QUALITY
Restrictions:	For Research Use only

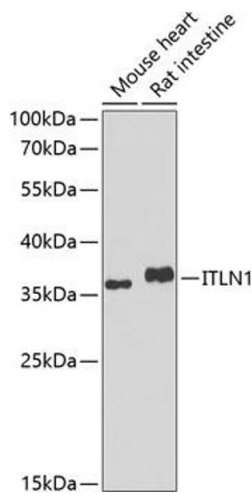
## Handling

Format:	Liquid
Buffer:	PBS with 0.02 % sodium azide,50 % glycerol, pH 7.3.
Preservative:	Sodium azide
Precaution of Use:	This product contains Sodium azide: a POISONOUS AND HAZARDOUS SUBSTANCE which should be handled by trained staff only.
Storage:	-20 °C
Storage Comment:	Store at -20°C. Avoid freeze / thaw cycles.



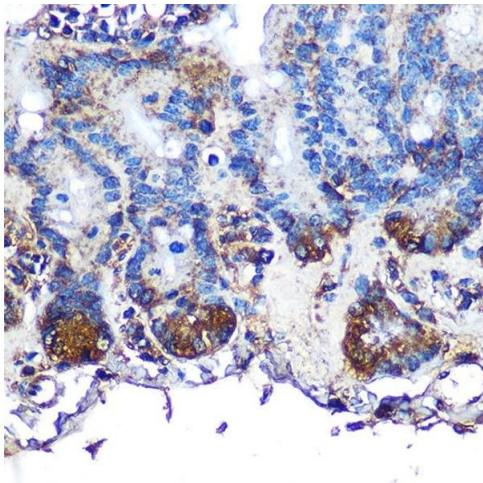
### Immunofluorescence

**Image 1.** Immunofluorescence analysis of mouse colon using ITLN1 Rabbit pAb (ABIN6132446, ABIN6142601, ABIN6142602 and ABIN6223070) at dilution of 1:100 (40x lens). Blue: DAPI for nuclear staining.



### Western Blotting

**Image 2.** Western blot analysis of extracts of various cell lines, using ITLN1 antibody (ABIN6132446, ABIN6142601, ABIN6142602 and ABIN6223070) at 1:1000 dilution. Secondary antibody: HRP Goat Anti-Rabbit IgG (H+L) (ABIN1684268 and ABIN3020597) at 1:10000 dilution. Lysates/proteins: 25 µg per lane. Blocking buffer: 3 % nonfat dry milk in TBST. Detection: ECL Basic Kit (RM00020). Exposure time: 90s.



### Immunohistochemistry

**Image 3.** Immunohistochemistry of paraffin-embedded mouse intestine using ITLN1 Rabbit pAb (ABIN6132446, ABIN6142601, ABIN6142602 and ABIN6223070) at dilution of 1:100 (40x lens). Perform microwave antigen retrieval with 10 mM PBS buffer pH 7.2 before commencing with IHC staining protocol.

Please check the [product details page](#) for more images. Overall 4 images are available for ABIN6142601.