

Datasheet for ABIN6142613
anti-ITPR1 antibody (AA 1850-1950)



[Go to Product page](#)

1 Image

Overview

| | |
|----------------------|---|
| Quantity: | 100 µL |
| Target: | ITPR1 |
| Binding Specificity: | AA 1850-1950 |
| Reactivity: | Human |
| Host: | Rabbit |
| Clonality: | Polyclonal |
| Conjugate: | This ITPR1 antibody is un-conjugated |
| Application: | Immunohistochemistry (IHC), Western Blotting (WB), Immunofluorescence (IF), Immunoprecipitation (IP) |

Product Details

| | |
|-------------------|--|
| Immunogen: | A synthetic peptide corresponding to a sequence within amino acids 1850-1950 of human IP3R (XP_011531985.1). |
| Sequence: | SFFCRLTEDK KSEKFFKVFY DRMKVAQQEI KATVTVNTSD LGNKKKDDEV DRDAPSRKKA KEPTTQITEE VRDQLLEASA ATRKAFTTFR READPDDHYQ P |
| Isotype: | IgG |
| Cross-Reactivity: | Human, Mouse, Rat |
| Characteristics: | Polyclonal Antibodies |

Target Details

| | |
|---------|-------|
| Target: | ITPR1 |
|---------|-------|

Target Details

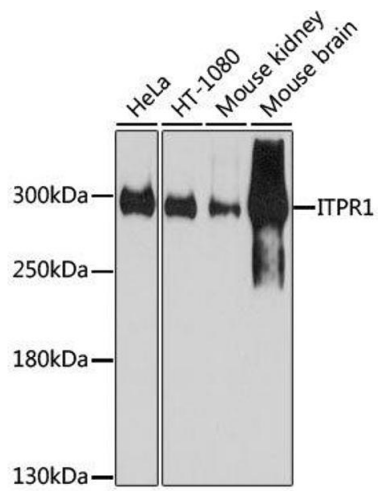
| | |
|-------------------|--|
| Alternative Name: | ITPR1 (ITPR1 Products) |
| Background: | <p>This gene encodes an intracellular receptor for inositol 1,4,5-trisphosphate. Upon stimulation by inositol 1,4,5-trisphosphate, this receptor mediates calcium release from the endoplasmic reticulum. Mutations in this gene cause spinocerebellar ataxia type 15, a disease associated with an heterogeneous group of cerebellar disorders. Multiple transcript variants have been identified for this</p> <p>gene.,ITPR1,ACV,CLA4,INSP3R1,IP3R,IP3R1,PPP1R94,SCA15,SCA16,SCA29,Cancer,Signal Transduction,G protein signaling,Phospholipase Signaling Pathway,Endocrine & Metabolism,Immunology & Inflammation,B Cell Receptor Signaling Pathway,T Cell Receptor Signaling Pathway,Neuroscience,Calcium Signaling,Neurodegenerative Diseases,ITPR1</p> |
| Molecular Weight: | 306-313 kDa |
| Gene ID: | 3708 |
| UniProt: | Q14643 |
| Pathways: | Fc-epsilon Receptor Signaling Pathway , EGFR Signaling Pathway , Neurotrophin Signaling Pathway , Thyroid Hormone Synthesis , Myometrial Relaxation and Contraction , Synaptic Membrane , G-protein mediated Events , Interaction of EGFR with phospholipase C-gamma |

Application Details

| | |
|--------------------|--|
| Application Notes: | WB,1:500 - 1:2000,IHC,1:50 - 1:200,IF,1:50 - 1:100,IP,1:50 - 1:200 |
| Comment: | HIGH QUALITY |
| Restrictions: | For Research Use only |

Handling

| | |
|--------------------|--|
| Format: | Liquid |
| Buffer: | PBS with 0.02 % sodium azide,50 % glycerol, pH 7.3. |
| Preservative: | Sodium azide |
| Precaution of Use: | This product contains Sodium azide: a POISONOUS AND HAZARDOUS SUBSTANCE which should be handled by trained staff only. |
| Storage: | -20 °C |
| Storage Comment: | Store at -20°C. Avoid freeze / thaw cycles. |



Western Blotting

Image 1. Western blot analysis of extracts of various cell lines, using ITPR1 antibody.