



[Go to Product page](#)

Datasheet for ABIN6142618
anti-ITPRIP antibody (AA 101-290)

1 Image

Overview

Quantity:	100 µL
Target:	ITPRIP
Binding Specificity:	AA 101-290
Reactivity:	Human
Host:	Rabbit
Clonality:	Polyclonal
Conjugate:	This ITPRIP antibody is un-conjugated
Application:	Western Blotting (WB)

Product Details

Immunogen:	Recombinant fusion protein containing a sequence corresponding to amino acids 101-290 of human ITPRIP (NP_203755.1).
Sequence:	EVWRQDHQEG PSPECLGGEE DELPGLGGAP LQGLTLPNKA TLGHFYERCI RGATADAART REFLEGFVDD LLEALRSLCN RDTDMEVEDF IGVDSMYENW QVDRPLLCHL FVPFTPPEPY RFHPELWCSG RSVPLDRQGY GQIKVVRADG DTLSCICGKT KLGEDMLCCL HGRNSMAPP GDMENLLCAT
Isotype:	IgG
Cross-Reactivity:	Human, Mouse
Characteristics:	Polyclonal Antibodies

Target Details

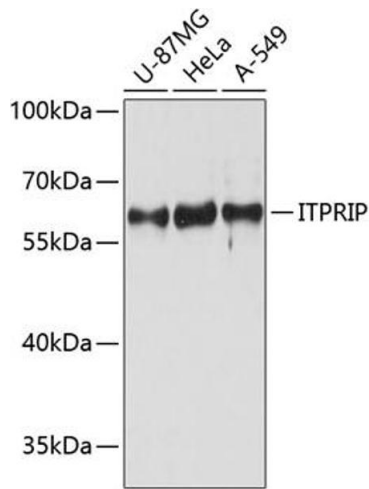
Target:	ITPRIP
Alternative Name:	ITPRIP (ITPRIP Products)
Background:	This gene encodes a membrane-associated protein that binds the inositol 1,4,5-trisphosphate receptor (ITPR). The encoded protein enhances the sensitivity of ITPR to intracellular calcium signaling. Alternative splicing results in multiple transcript variants.,ITPRIP,DANGER,KIAA1754,bA127L20,bA127L20.2,Cell Biology & Developmental Biology,ITPRIP
Molecular Weight:	62 kDa
Gene ID:	85450
UniProt:	Q8IWB1

Application Details

Application Notes:	WB,1:500 - 1:2000
Comment:	HIGH QUALITY
Restrictions:	For Research Use only

Handling

Format:	Liquid
Buffer:	PBS with 0.02 % sodium azide,50 % glycerol, pH 7.3.
Preservative:	Sodium azide
Precaution of Use:	This product contains Sodium azide: a POISONOUS AND HAZARDOUS SUBSTANCE which should be handled by trained staff only.
Storage:	-20 °C
Storage Comment:	Store at -20°C. Avoid freeze / thaw cycles.



Western Blotting

Image 1. Western blot analysis of extracts of various cell lines, using ITPRIP antibody (ABIN6133416, ABIN6142618, ABIN6142619 and ABIN6215422) at 1:3000 dilution. Secondary antibody: HRP Goat Anti-Rabbit IgG (H+L) (ABIN1684268 and ABIN3020597) at 1:10000 dilution. Lysates/proteins: 25 µg per lane. Blocking buffer: 3 % nonfat dry milk in TBST. Detection: ECL Basic Kit (RM00020). Exposure time: 30s.