



[Go to Product page](#)

Datasheet for ABIN6142653  
**anti-JARID2 antibody (AA 1027-1246)**

1 Image

Overview

Quantity:	100 µL
Target:	JARID2
Binding Specificity:	AA 1027-1246
Reactivity:	Human
Host:	Rabbit
Clonality:	Polyclonal
Conjugate:	This JARID2 antibody is un-conjugated
Application:	Western Blotting (WB)

Product Details

Immunogen:	Recombinant fusion protein containing a sequence corresponding to amino acids 1027-1246 of human JARID2 (NP_004964.2).
Sequence:	ETVHFATTQW TSMGFETAKE MKRRHIAKPF SMEKLLYQIA QAEAKKENG P TLSTISALLD ELRDTELRQR RQLFEAGLHS SARYGSHDGS STVADGKKKP RKWLQLETSE RRCQICQHLC YLSMVVQENE NVVFCLECAL RHVEKQKSCR GLKLMYRYDE EQIISLVNQI CGKVS GKNKGS IENCLSKPTP KRGPRKRATV DVPPSRLSAS SSSKSASSSS
Isotype:	IgG
Cross-Reactivity:	Human, Mouse, Rat
Characteristics:	Polyclonal Antibodies

## Target Details

---

Target:	JARID2
Alternative Name:	JARID2 ( <a href="#">JARID2 Products</a> )
Background:	This gene encodes a Jumonji- and AT-rich interaction domain (ARID)-domain-containing protein. The encoded protein is a DNA-binding protein that functions as a transcriptional repressor. This protein interacts with the Polycomb repressive complex 2 (PRC2) which plays an essential role in regulating gene expression during embryonic development. This protein facilitates the recruitment of the PRC2 complex to target genes. Alternate splicing results in multiple transcript variants. Mutations in this gene are associated with chronic myeloid malignancies.,JARID2,JMJ,Epigenetics & Nuclear Signaling,Neuroscience,JARID2
Molecular Weight:	106 kDa/119 kDa/138 kDa
Gene ID:	3720
UniProt:	<a href="#">Q92833</a>
Pathways:	<a href="#">Chromatin Binding</a>

## Application Details

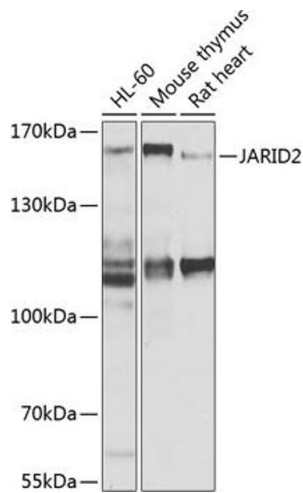
---

Application Notes:	WB,1:500 - 1:2000
Comment:	HIGH QUALITY
Restrictions:	For Research Use only

## Handling

---

Format:	Liquid
Buffer:	PBS with 0.02 % sodium azide,50 % glycerol, pH 7.3.
Preservative:	Sodium azide
Precaution of Use:	This product contains Sodium azide: a POISONOUS AND HAZARDOUS SUBSTANCE which should be handled by trained staff only.
Storage:	-20 °C
Storage Comment:	Store at -20°C. Avoid freeze / thaw cycles.



### Western Blotting

**Image 1.** Western blot analysis of extracts of various cell lines, using J antibody (ABIN6129402, ABIN6142653, ABIN6142654 and ABIN6225131) at 1:1000 dilution. Secondary antibody: HRP Goat Anti-Rabbit IgG (H+L) (ABIN1684268 and ABIN3020597) at 1:10000 dilution. Lysates/proteins: 25 µg per lane. Blocking buffer: 3% nonfat dry milk in TBST. Detection: ECL Basic Kit (RM00020). Exposure time: 10s.