



[Go to Product page](#)

Datasheet for ABIN6142683
anti-KARS antibody (AA 298-597)

2 Images

Overview

Quantity:	100 µL
Target:	KARS
Binding Specificity:	AA 298-597
Reactivity:	Human
Host:	Rabbit
Clonality:	Polyclonal
Conjugate:	This KARS antibody is un-conjugated
Application:	Western Blotting (WB), Immunofluorescence (IF)

Product Details

Immunogen:	Recombinant fusion protein containing a sequence corresponding to amino acids 298-597 of human LysRS/LysRS/KARS (NP_005539.1).
Sequence:	IAPELYHKML VVGGIDRVYE IGRQFRNEGI DLTHNPEFTT CEFY MAYADY HDLMEITEKM VSGMVKHITG SYKVTYHPDG PEGQAYDVDF TPPFRRINMV EELEKALGMK LPETNLFETE ETRKILDIC VAKAVECPPP RTTARLLDKL VGEFLEVTCI NPTFICDHPQ IMSPLAKWHR SKEGLTERFE LFVMKKEICN AYTELNDPMR QRQLFEEQAK AKAAGDDEAM FIDENFCTAL EYGLPPTAGW GMGIDRVAMF LTDSNNIKEV LLFPAMKPED KKENVATTD T LESTTVGTSV
Isotype:	IgG
Cross-Reactivity:	Human, Mouse, Rat
Characteristics:	Polyclonal Antibodies

Target Details

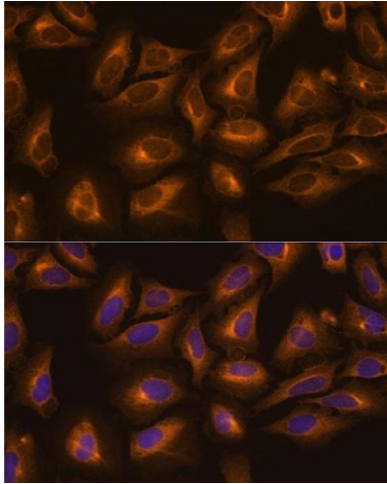
Target:	KARS
Alternative Name:	KARS (KARS Products)
Background:	Aminoacyl-tRNA synthetases are a class of enzymes that charge tRNAs with their cognate amino acids. Lysyl-tRNA synthetase is a homodimer localized to the cytoplasm which belongs to the class II family of tRNA synthetases. It has been shown to be a target of autoantibodies in the human autoimmune diseases, polymyositis or dermatomyositis. Alternatively spliced transcript variants encoding different isoforms have been found for this gene.,KARS,CMTRIB,DFNB89,KARS1,KARS2,KRS,Epigenetics & Nuclear Signaling,KARS
Molecular Weight:	68 kDa/71 kDa
Gene ID:	3735
UniProt:	Q15046

Application Details

Application Notes:	WB,1:500 - 1:2000,IF,1:50 - 1:200
Restrictions:	For Research Use only

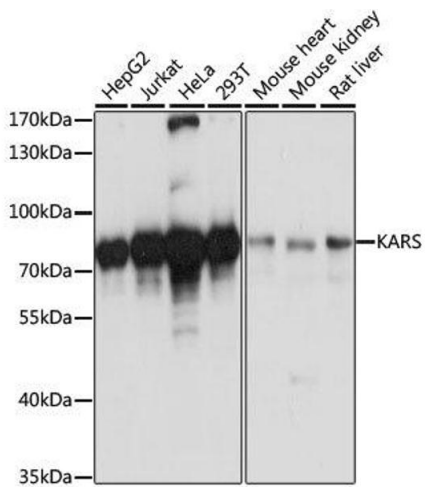
Handling

Format:	Liquid
Buffer:	PBS with 0.02 % sodium azide,50 % glycerol, pH 7.3.
Preservative:	Sodium azide
Precaution of Use:	This product contains Sodium azide: a POISONOUS AND HAZARDOUS SUBSTANCE which should be handled by trained staff only.
Storage:	-20 °C
Storage Comment:	Store at -20°C. Avoid freeze / thaw cycles.



Immunofluorescence

Image 1. Immunofluorescence analysis of U-2 OS cells using LysRS/LysRS/KARS Rabbit pAb (ABIN6128149, ABIN6142683, ABIN6142684 and ABIN6217884) at dilution of 1:100 (40x lens). Blue: DAPI for nuclear staining.



Western Blotting

Image 2. Western blot analysis of extracts of various cell lines, using KARS antibody.