

Datasheet for ABIN6142695
anti-KCNA2 antibody (AA 1-165)[Go to Product page](#)

2 Images

Overview

Quantity:	100 µL
Target:	KCNA2
Binding Specificity:	AA 1-165
Reactivity:	Human
Host:	Rabbit
Clonality:	Polyclonal
Conjugate:	This KCNA2 antibody is un-conjugated
Application:	Western Blotting (WB), Immunofluorescence (IF)

Product Details

Immunogen:	Recombinant fusion protein containing a sequence corresponding to amino acids 1-165 of human KCNA2 (NP_001191198.1).
Sequence:	MTVATGDPAD EAAALPGHPQ DTYDPEADHE CCERVVINIS GLRFETQLKT LAQFPETLLG DPKKRMRYFD PLRNEYFFDR NRPSFDAILY YYQSGGRLRR PVNVPLDIFS EEIRFYELGE EAMEMFREDE GYIKEEERPL PENEFRQVW LLFEYPESSG PARII
Isotype:	IgG
Cross-Reactivity:	Human, Mouse
Characteristics:	Polyclonal Antibodies

Target Details

Target:	KCNA2
---------	-------

Target Details

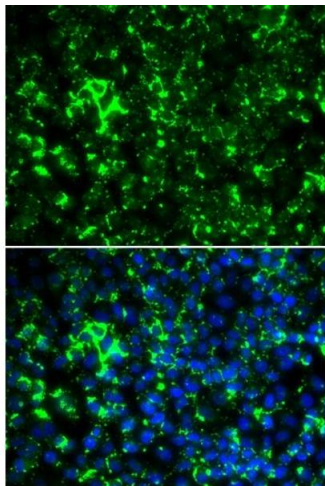
Alternative Name:	KCNA2 (KCNA2 Products)
Background:	<p>Potassium channels represent the most complex class of voltage-gated ion channels from both functional and structural standpoints. Their diverse functions include regulating neurotransmitter release, heart rate, insulin secretion, neuronal excitability, epithelial electrolyte transport, smooth muscle contraction, and cell volume. Four sequence-related potassium channel genes - shaker, shaw, shab, and shal - have been identified in Drosophila, and each has been shown to have human homolog(s). This gene encodes a member of the potassium channel, voltage-gated, shaker-related subfamily. This member contains six membrane-spanning domains with a shaker-type repeat in the fourth segment. It belongs to the delayed rectifier class, members of which allow nerve cells to efficiently repolarize following an action potential. The coding region of this gene is intronless, and the gene is clustered with genes KCNA3 and KCNA10 on chromosome</p> <p>1.,KCNA2,EIEE32,HBK5,HK4,HUKIV,KV1.2,MK2,NGK1,RBK2,Neuroscience,KCNA2</p>
Molecular Weight:	40 kDa/56 kDa
Gene ID:	3737
UniProt:	P16389

Application Details

Application Notes:	WB,1:500 - 1:2000,IF,1:50 - 1:100
Restrictions:	For Research Use only

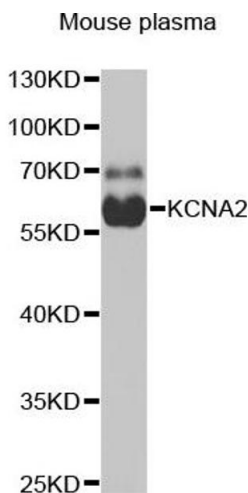
Handling

Format:	Liquid
Buffer:	PBS with 0.02 % sodium azide,50 % glycerol, pH 7.3.
Preservative:	Sodium azide
Precaution of Use:	This product contains Sodium azide: a POISONOUS AND HAZARDOUS SUBSTANCE which should be handled by trained staff only.
Storage:	-20 °C
Storage Comment:	Store at -20°C. Avoid freeze / thaw cycles.



Immunofluorescence

Image 1. Immunofluorescence analysis of HeLa cells using KCN antibody (ABIN6129438, ABIN6142695, ABIN6142696 and ABIN6221897). Blue: DAPI for nuclear staining.



Western Blotting

Image 2. Western blot analysis of extracts of mouse plasma, using KCN antibody (ABIN6129438, ABIN6142695, ABIN6142696 and ABIN6221897) at 1:1000 dilution. Secondary antibody: HRP Goat Anti-Rabbit IgG (H+L) (ABIN1684268 and ABIN3020597) at 1:10000 dilution. Lysates/proteins: 25 µg per lane. Blocking buffer: 3 % nonfat dry milk in TBST. Detection: ECL Basic Kit (RM00020). Exposure time: 90s.