

Datasheet for ABIN6142706  
**anti-KCNE2 antibody (AA 1-100)**



[Go to Product page](#)

1 Image

## Overview

Quantity:	100 µL
Target:	KCNE2
Binding Specificity:	AA 1-100
Reactivity:	Human
Host:	Rabbit
Clonality:	Polyclonal
Conjugate:	This KCNE2 antibody is un-conjugated
Application:	Western Blotting (WB)

## Product Details

Immunogen:	A synthetic peptide corresponding to a sequence within amino acids 1-100 of human KCNE2 (NP_751951.1).
Sequence:	MSTLSNFTQT LEDVFRIRFI TYMDNWRQNT TAEQEALQAK VDAENFYIVI LYLMVMIGMF SFIIVAILVS TVKSKRREHS NDPYHQYIVE DWQEKYKSQI
Isotype:	IgG
Cross-Reactivity:	Human, Mouse
Characteristics:	Polyclonal Antibodies

## Target Details

Target:	KCNE2
---------	-------

## Target Details

---

Alternative Name: [KCNE2 \(KCNE2 Products\)](#)

---

Background: Voltage-gated potassium (Kv) channels represent the most complex class of voltage-gated ion channels from both functional and structural standpoints. Their diverse functions include regulating neurotransmitter release, heart rate, insulin secretion, neuronal excitability, epithelial electrolyte transport, smooth muscle contraction, and cell volume. This gene encodes a member of the potassium channel, voltage-gated, isk-related subfamily. This member is a small integral membrane subunit that assembles with the KCNH2 gene product, a pore-forming protein, to alter its function. This gene is expressed in heart and muscle and the gene mutations are associated with cardiac arrhythmia.,KCNE2,ATFB4,LQT5,LQT6,MIRP1,Neuroscience,Cardiovascular,Heart,Cardiac arrhythmias,KCNE2

---

Molecular Weight: 14 kDa

---

Gene ID: 9992

---

UniProt: [Q9Y6J6](#)

---

## Application Details

---

Application Notes: WB,1:500 - 1:2000

---

Comment: HIGH QUALITY

---

Restrictions: For Research Use only

---

## Handling

---

Format: Liquid

---

Buffer: PBS with 0.02 % sodium azide,50 % glycerol, pH 7.3.

---

Preservative: Sodium azide

---

Precaution of Use: This product contains Sodium azide: a POISONOUS AND HAZARDOUS SUBSTANCE which should be handled by trained staff only.

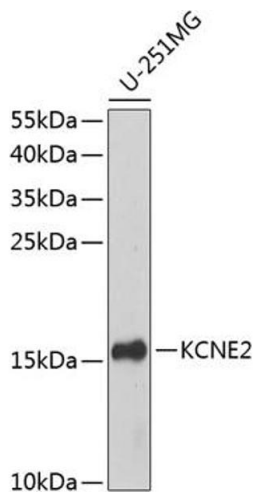
---

Storage: -20 °C

---

Storage Comment: Store at -20°C. Avoid freeze / thaw cycles.

---



### Western Blotting

**Image 1.** Western blot analysis of extracts of U-251MG cells, using KCNE2 antibody at 1:1000 dilution. Secondary antibody: HRP Goat Anti-Rabbit IgG (H+L) (ABIN1684268 and ABIN3020597) at 1:10000 dilution. Lysates/proteins: 25 µg per lane. Blocking buffer: 3% nonfat dry milk in TBST. Detection: ECL Basic Kit (RM00020). Exposure time: 90s.