



[Go to Product page](#)

Datasheet for ABIN6142719
anti-KCNJ10 antibody (AA 50-150)

1 Image

Overview

Quantity:	100 µL
Target:	KCNJ10
Binding Specificity:	AA 50-150
Reactivity:	Human
Host:	Rabbit
Clonality:	Polyclonal
Conjugate:	This KCNJ10 antibody is un-conjugated
Application:	Western Blotting (WB)

Product Details

Immunogen:	A synthetic peptide corresponding to a sequence within amino acids 50-150 of human KCNJ10 (NP_002232.2).
Sequence:	LYLKDLWTF IDMQWRYKLL LFSATFAGTW FLFGVVWYLV AVAHGDLEL DPPANHTPCV VQVHTLTGAF LFSLESQTTI GYGFRYISEE CPLAIVLLIA Q
Isotype:	IgG
Cross-Reactivity:	Human, Mouse, Rat
Characteristics:	Polyclonal Antibodies

Target Details

Target:	KCNJ10
---------	--------

Target Details

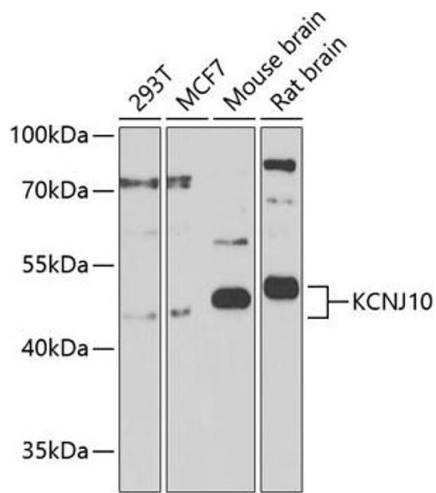
Alternative Name:	KCNJ10 (KCNJ10 Products)
Background:	This gene encodes a member of the inward rectifier-type potassium channel family, characterized by having a greater tendency to allow potassium to flow into, rather than out of, a cell. The encoded protein may form a heterodimer with another potassium channel protein and may be responsible for the potassium buffering action of glial cells in the brain. Mutations in this gene have been associated with seizure susceptibility of common idiopathic generalized epilepsy syndromes.,KCNJ10,BIRK-10,KCNJ13-PEN,KIR1.2,KIR4.1,SESAME,Neuroscience,KCNJ10
Molecular Weight:	42 kDa
Gene ID:	3766
UniProt:	P78508
Pathways:	Dicarboxylic Acid Transport , Regulation of long-term Neuronal Synaptic Plasticity

Application Details

Application Notes:	WB,1:500 - 1:2000
Restrictions:	For Research Use only

Handling

Format:	Liquid
Buffer:	PBS with 0.02 % sodium azide,50 % glycerol, pH 7.3.
Preservative:	Sodium azide
Precaution of Use:	This product contains Sodium azide: a POISONOUS AND HAZARDOUS SUBSTANCE which should be handled by trained staff only.
Storage:	-20 °C
Storage Comment:	Store at -20°C. Avoid freeze / thaw cycles.



Western Blotting

Image 1. Western blot analysis of extracts of various cell lines, using KCNJ10 Antibody (ABIN6134092, ABIN6142719, ABIN6142720 and ABIN6225135) at 1:1000 dilution. Secondary antibody: HRP Goat Anti-Rabbit IgG (H+L) (ABIN1684268 and ABIN3020597) at 1:10000 dilution. Lysates/proteins: 25 µg per lane. Blocking buffer: 3 % nonfat dry milk in TBST. Detection: ECL Basic Kit (RM00020). Exposure time: 90s.