



Datasheet for ABIN6142790
anti-KDM3A antibody (AA 350-450)



[Go to Product page](#)

3 Images

Overview

Quantity:	100 µL
Target:	KDM3A
Binding Specificity:	AA 350-450
Reactivity:	Human
Host:	Rabbit
Clonality:	Polyclonal
Conjugate:	This KDM3A antibody is un-conjugated
Application:	Western Blotting (WB), Immunohistochemistry (IHC), Immunofluorescence (IF)

Product Details

Immunogen:	A synthetic peptide corresponding to a sequence within amino acids 350-450 of human KDM3A (NP_060903.2).
Sequence:	LNTKSEALRT KPDVCKAGLL SKSSQIGTGD LKILTEPKGS CTQPKTNTDQ ENRLESVPQA LTGLPKKECLP TKASSKAELE IANPPELQKH LEHAPSPSDV S
Isotype:	IgG
Cross-Reactivity:	Human, Mouse, Rat
Characteristics:	Polyclonal Antibodies

Target Details

Target:	KDM3A
---------	-------

Target Details

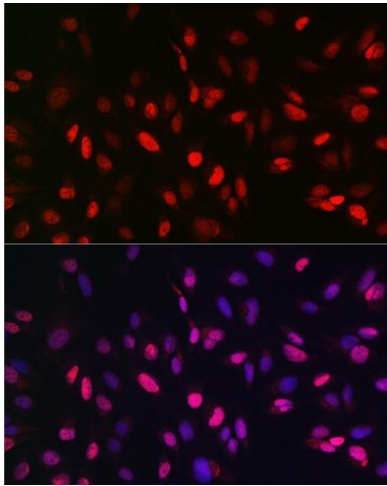
Alternative Name:	KDM3A (KDM3A Products)
Background:	This gene encodes a zinc finger protein that contains a jumonji domain and may play a role in hormone-dependent transcriptional activation. Alternative splicing results in multiple transcript variants.,KDM3A,JHDM2A,JHMD2A,JMJD1,JMJD1A,TSGA,Epigenetics & Nuclear Signaling,Chromatin Modifying Enzymes,Demethylation,KDM3A
Molecular Weight:	147 kDa
Gene ID:	55818
UniProt:	Q9Y4C1
Pathways:	Intracellular Steroid Hormone Receptor Signaling Pathway , Nuclear Hormone Receptor Binding , Warburg Effect

Application Details

Application Notes:	WB,1:500 - 1:2000,IHC,1:50 - 1:200,IF,1:50 - 1:200
Comment:	HIGH QUALITY
Restrictions:	For Research Use only

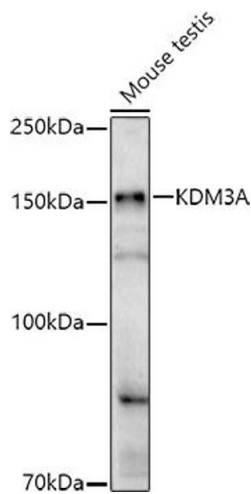
Handling

Format:	Liquid
Buffer:	PBS with 0.02 % sodium azide,50 % glycerol, pH 7.3.
Preservative:	Sodium azide
Precaution of Use:	This product contains Sodium azide: a POISONOUS AND HAZARDOUS SUBSTANCE which should be handled by trained staff only.
Storage:	-20 °C
Storage Comment:	Store at -20°C. Avoid freeze / thaw cycles.



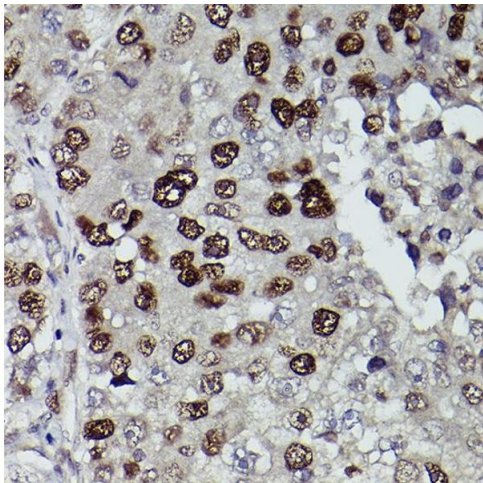
Immunofluorescence

Image 1. Immunofluorescence analysis of U2OS cells using KDM3A Rabbit pAb (ABIN6134725, ABIN6142790, ABIN6142791 and ABIN6215526) at dilution of 1:150 (40x lens). Blue: DAPI for nuclear staining.



Western Blotting

Image 2. Western blot analysis of extracts of Mouse testis, using KDM3A antibody (ABIN6134725, ABIN6142790, ABIN6142791 and ABIN6215526) at 1:1000 dilution. Secondary antibody: HRP Goat Anti-Rabbit IgG (H+L) (ABIN1684268 and ABIN3020597) at 1:10000 dilution. Lysates/proteins: 25 µg per lane. Blocking buffer: 3 % nonfat dry milk in TBST. Detection: ECL Enhanced Kit (RM00021). Exposure time: 180s.



Immunohistochemistry

Image 3. Immunohistochemistry of paraffin-embedded human liver cancer using KDM3A Rabbit pAb (ABIN6134725, ABIN6142790, ABIN6142791 and ABIN6215526) at dilution of 1:150 (40x lens). Perform high pressure antigen retrieval with 10 mM citrate buffer pH 6.0 before commencing with IHC staining protocol.