

Datasheet for ABIN6142800

anti-KDM5A antibody**3** Images[Go to Product page](#)

Overview

Quantity:	100 µL
Target:	KDM5A
Reactivity:	Human
Host:	Rabbit
Clonality:	Polyclonal
Conjugate:	This KDM5A antibody is un-conjugated
Application:	Western Blotting (WB), Immunoprecipitation (IP), Chromatin Immunoprecipitation (ChIP)

Product Details

Immunogen:	Recombinant protein of human KDM5A
Isotype:	IgG
Cross-Reactivity:	Human, Rat
Characteristics:	Polyclonal Antibodies

Target Details

Target:	KDM5A
Alternative Name:	KDM5A (KDM5A Products)
Background:	This gene encodes a member of the Jumonji, AT-rich interactive domain 1 (JARID1) histone demethylase protein family. The encoded protein plays a role in gene regulation through the histone code by specifically demethylating lysine 4 of histone H3. The encoded protein interacts with many other proteins, including retinoblastoma protein, and is implicated in the

Target Details

transcriptional regulation of Hox genes and cytokines. This gene may play a role in tumor progression.,KDM5A,RBBP-2,RBBP2,RBP2,Epigenetics & Nuclear Signaling,Chromatin Modifying Enzymes,Demethylation,Transcription Factors,Nuclear Receptor Signaling,Cell Biology & Developmental Biology,Notch Signaling Pathway,KDM5A

Molecular Weight: 186 kDa/192 kDa

Gene ID: 5927

UniProt: [P29375](#)

Pathways: [Chromatin Binding](#), [Warburg Effect](#)

Application Details

Application Notes: WB,1:500 - 1:2000,IP,1:50 - 1:200,ChIP,1:50 - 1:200

Restrictions: For Research Use only

Handling

Format: Liquid

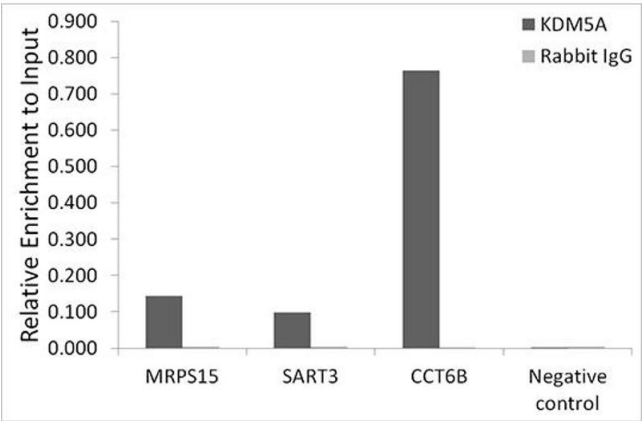
Buffer: PBS with 0.02 % sodium azide,50 % glycerol, pH 7.3.

Preservative: Sodium azide

Precaution of Use: This product contains Sodium azide: a POISONOUS AND HAZARDOUS SUBSTANCE which should be handled by trained staff only.

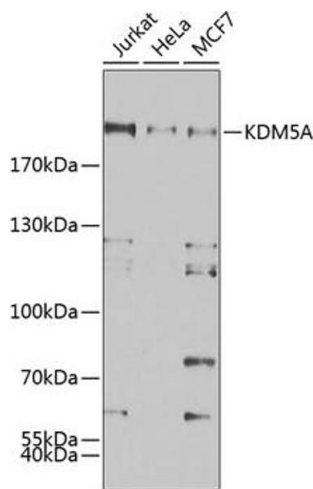
Storage: -20 °C

Storage Comment: Store at -20°C. Avoid freeze / thaw cycles.



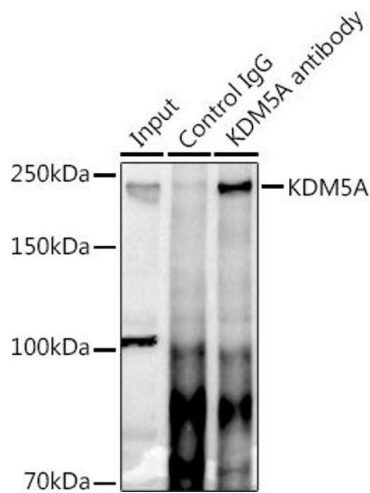
Chromatin Immunoprecipitation

Image 1. Chromatin immunoprecipitation analysis of extracts of HCT116 cells, using KDM5A antibody (ABIN6131816, ABIN6142800, ABIN6142801 and ABIN6223074) and rabbit IgG. The amount of immunoprecipitated DNA was checked by quantitative PCR. Histogram was constructed by the ratios of the immunoprecipitated DNA to the input.



Western Blotting

Image 2. Western blot analysis of extracts of various cell lines, using KDM5A antibody (ABIN6131816, ABIN6142800, ABIN6142801 and ABIN6223074) at 1:500 dilution. Secondary antibody: HRP Goat Anti-Rabbit IgG (H+L) (ABIN1684268 and ABIN3020597) at 1:10000 dilution. Lysates/proteins: 25 µg per lane. Blocking buffer: 3 % nonfat dry milk in TBST. Detection: ECL Enhanced Kit (RM00021). Exposure time: 60s.



Immunoprecipitation

Image 3. Immunoprecipitation analysis of 300 µg extracts of HeLa cells using 3 µg KDM5A antibody (ABIN6131816, ABIN6142800, ABIN6142801 and ABIN6223074). Western blot was performed from the immunoprecipitate using KDM5A antibody (ABIN6131816, ABIN6142800, ABIN6142801 and ABIN6223074) at a dilution of 1:500.