



[Go to Product page](#)

Datasheet for ABIN6142802  
**anti-KDM5B antibody (AA 784-883)**

2 Images

Overview

Quantity:	100 µL
Target:	KDM5B
Binding Specificity:	AA 784-883
Reactivity:	Human
Host:	Rabbit
Clonality:	Polyclonal
Conjugate:	This KDM5B antibody is un-conjugated
Application:	Western Blotting (WB), Immunofluorescence (IF)

Product Details

Immunogen:	Recombinant fusion protein containing a sequence corresponding to amino acids 784-883 of human KDM5B (NP_006609.3).
Sequence:	EESEMKKFPD NDLLRHLRLV TQDAEKCASV AQQLNGKRQ TRYRSGGGKS QNQLTVNELR QFVTQLYALP CVLSQTPLLK DLLNRVEDFQ QHSQKLLSEE
Isotype:	IgG
Cross-Reactivity:	Human
Characteristics:	Polyclonal Antibodies

Target Details

Target:	KDM5B
---------	-------

## Target Details

---

Alternative Name:	KDM5B ( <a href="#">KDM5B Products</a> )
Background:	This gene encodes a lysine-specific histone demethylase that belongs to the jumonji/ARID domain-containing family of histone demethylases. The encoded protein is capable of demethylating tri-, di- and monomethylated lysine 4 of histone H3. This protein plays a role in the transcriptional repression of certain tumor suppressor genes and is upregulated in certain cancer cells. This protein may also play a role in genome stability and DNA repair. Alternate splicing results in multiple transcript variants.,KDM5B,CT31,JARID1B,PLU-1,PLU1,PPP1R98,PUT1,RBBP2H1A,RBP2-H1,Epigenetics & Nuclear Signaling,Chromatin Modifying Enzymes,Demethylation,Nuclear Receptor Signaling,KDM5B
Molecular Weight:	175 kDa/179 kDa
Gene ID:	10765
UniProt:	<a href="#">Q9UGL1</a>
Pathways:	<a href="#">Warburg Effect</a>

## Application Details

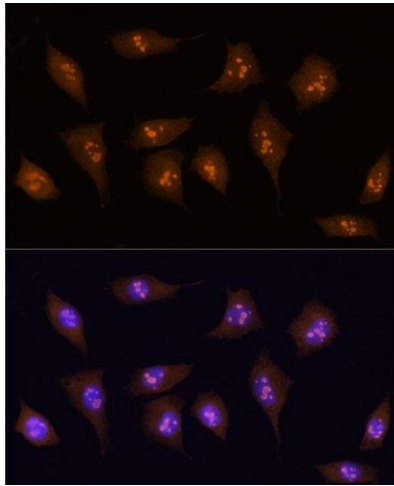
---

Application Notes:	WB,1:500 - 1:2000,IF,1:50 - 1:200
Comment:	HIGH QUALITY
Restrictions:	For Research Use only

## Handling

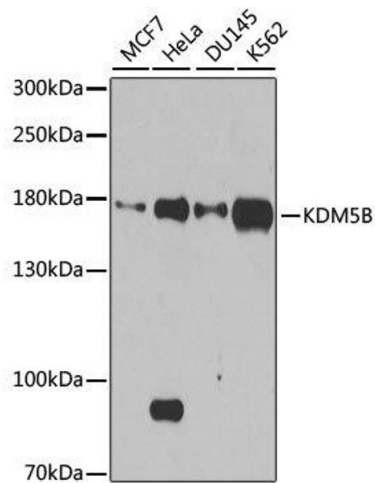
---

Format:	Liquid
Buffer:	PBS with 0.02 % sodium azide,50 % glycerol, pH 7.3.
Preservative:	Sodium azide
Precaution of Use:	This product contains Sodium azide: a POISONOUS AND HAZARDOUS SUBSTANCE which should be handled by trained staff only.
Storage:	-20 °C
Storage Comment:	Store at -20°C. Avoid freeze / thaw cycles.



### Immunofluorescence

**Image 1.** Immunofluorescence analysis of L929 using KDM5B antibody (ABIN6132287, ABIN6142802, ABIN6142803 and ABIN6223724) at dilution of 1:100 (40x lens). Blue: DAPI for nuclear staining.



### Western Blotting

**Image 2.** Western blot analysis of extracts of various cell lines, using KDM5B antibody.