



[Go to Product page](#)

Datasheet for ABIN6142869
anti-KIF2C antibody (AA 1-190)

5 Images

Overview

Quantity:	100 µL
Target:	KIF2C
Binding Specificity:	AA 1-190
Reactivity:	Human
Host:	Rabbit
Clonality:	Polyclonal
Conjugate:	This KIF2C antibody is un-conjugated
Application:	Western Blotting (WB), Immunofluorescence (IF), Immunohistochemistry (IHC)

Product Details

Immunogen:	Recombinant fusion protein containing a sequence corresponding to amino acids 1-190 of human KIF2C/MCAK (NP_006836.2).
Sequence:	MAMDSSLQAR LFPGLAIKIQ RSNGLIHSAN VRTVNLEKSC VSVEWAEGGA TKGKEIDFDD VAAINPELLQ LLPLHPKDNL PLQENVTIQK QKRRSVNSKI PPKESLRSR STRMSTVSEL RITAQENDME VELPAAANSR KQFSVPPAPT RPSCPAVAEI PLRMVSEEME EQVHSIRGSS SANPVNSVRR
Isotype:	IgG
Cross-Reactivity:	Human, Mouse, Rat
Characteristics:	Polyclonal Antibodies

Target Details

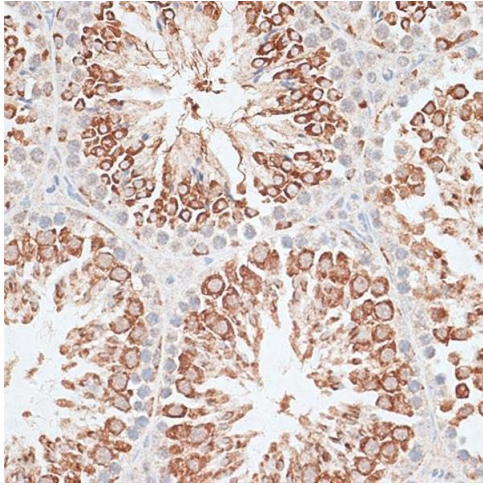
Target:	KIF2C
Alternative Name:	KIF2C (KIF2C Products)
Background:	This gene encodes a kinesin-like protein that functions as a microtubule-dependent molecular motor. The encoded protein can depolymerize microtubules at the plus end, thereby promoting mitotic chromosome segregation. Alternative splicing results in multiple transcript variants.,KIF2C,CT139,KNSL6,MCAK,Signal Transduction,Cell Biology & Developmental Biology,Cell Cycle,Centromere,Cytoskeleton,Motor Proteins,KIF2C
Molecular Weight:	75 kDa/81 kDa
Gene ID:	11004
UniProt:	Q99661
Pathways:	Microtubule Dynamics

Application Details

Application Notes:	WB,1:500 - 1:2000,IHC,1:50 - 1:200,IF,1:50 - 1:200
Comment:	HIGH QUALITY
Restrictions:	For Research Use only

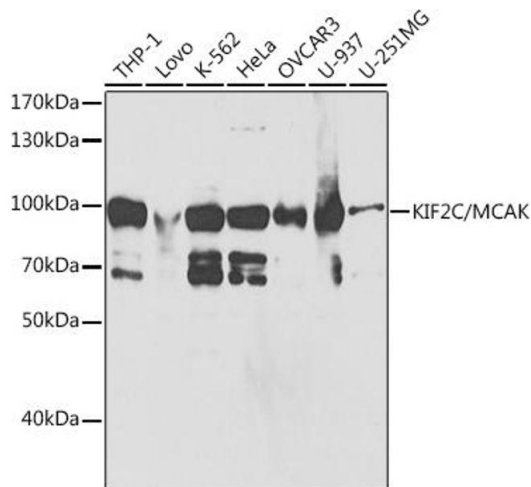
Handling

Format:	Liquid
Buffer:	PBS with 0.02 % sodium azide,50 % glycerol, pH 7.3.
Preservative:	Sodium azide
Precaution of Use:	This product contains Sodium azide: a POISONOUS AND HAZARDOUS SUBSTANCE which should be handled by trained staff only.
Storage:	-20 °C
Storage Comment:	Store at -20°C. Avoid freeze / thaw cycles.



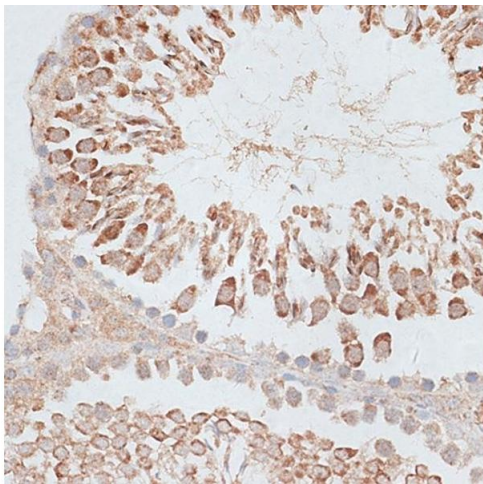
Immunohistochemistry

Image 1. Immunohistochemistry of paraffin-embedded Mouse testis using KIF2C/MCAK antibody (ABIN6128155, ABIN6142869, ABIN6142870 and ABIN6221103) at dilution of 1:100 (40x lens). Perform microwave antigen retrieval with 10 mM PBS buffer pH 7.2 before commencing with IHC staining protocol.



Western Blotting

Image 2. Western blot analysis of extracts of various cell lines, using KIF2C/MCAK antibody (ABIN6128155, ABIN6142869, ABIN6142870 and ABIN6221103) at 1:1000 dilution. Secondary antibody: HRP Goat Anti-Rabbit IgG (H+L) (ABIN1684268 and ABIN3020597) at 1:10000 dilution. Lysates/proteins: 25 µg per lane. Blocking buffer: 3 % nonfat dry milk in TBST.



Immunohistochemistry

Image 3. Immunohistochemistry of paraffin-embedded Rat testis using KIF2C/MCAK antibody (ABIN6128155, ABIN6142869, ABIN6142870 and ABIN6221103) at dilution of 1:100 (40x lens). Perform microwave antigen retrieval with 10 mM PBS buffer pH 7.2 before commencing with IHC staining protocol.

Please check the [product details page](#) for more images. Overall 5 images are available for ABIN6142869.