

Datasheet for ABIN6142880
anti-KIFC3 antibody (AA 140-390)



[Go to Product page](#)

1 Image

Overview

Quantity:	100 µL
Target:	KIFC3
Binding Specificity:	AA 140-390
Reactivity:	Human
Host:	Rabbit
Clonality:	Polyclonal
Conjugate:	This KIFC3 antibody is un-conjugated
Application:	Western Blotting (WB)

Product Details

Immunogen:	Recombinant fusion protein containing a sequence corresponding to amino acids 140-390 of human KIFC3 (NP_005541.3).
Sequence:	MVENERLRQE MRRCEAELQE LRTKPAGPCP GCEHSQESAQ LRDKLSQLQL EMAESKGMLS ELNLEVQKQT DRLAEVELRL KDCLAEKAQE EERLSRRLRD SHETIASLRA QSPPVKYVIK TVEVSSKTK QALSSEQARN QHLQEQVAMQ RQVLKEMEQQ LQSSHQLTAR LRAQIAMYES ELERAHQML EEMQSLEEDK NRAIEEAFAR AQVEMKAVHE NLAGVRTNLL TLQPALRTL NDYNGLKRQV R
Isotype:	IgG
Cross-Reactivity:	Human, Rat
Characteristics:	Polyclonal Antibodies

Target Details

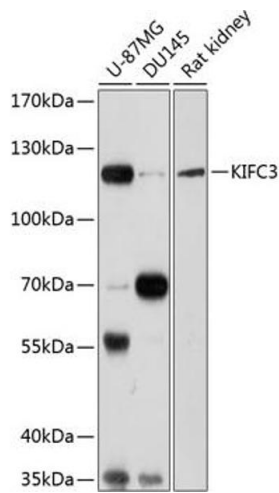
Target:	KIFC3
Alternative Name:	KIFC3 (KIFC3 Products)
Background:	<p>This gene encodes a member of the kinesin-14 family of microtubule motors. Members of this family play a role in the formation, maintenance and remodeling of the bipolar mitotic spindle. The protein encoded by this gene has cytoplasmic functions in the interphase cells. It may also be involved in the final stages of cytokinesis. Alternative splicing results in multiple transcript variants encoding different isoforms.,KIFC3,Signal Transduction,Cell Biology & Developmental Biology,Cytoskeleton,Motor Proteins,KIFC3</p>
Molecular Weight:	71 kDa/77 kDa/92 kDa/94 kDa
Gene ID:	3801
UniProt:	Q9BVG8
Pathways:	Cell-Cell Junction Organization

Application Details

Application Notes:	WB,1:200 - 1:2000
Comment:	HIGH QUALITY
Restrictions:	For Research Use only

Handling

Format:	Liquid
Buffer:	PBS with 0.02 % sodium azide,50 % glycerol, pH 7.3.
Preservative:	Sodium azide
Precaution of Use:	This product contains Sodium azide: a POISONOUS AND HAZARDOUS SUBSTANCE which should be handled by trained staff only.
Storage:	-20 °C
Storage Comment:	Store at -20°C. Avoid freeze / thaw cycles.



Western Blotting

Image 1. Western blot analysis of extracts of various cell lines, using KIFC3 antibody at 1:1000 dilution. Secondary antibody: HRP Goat Anti-Rabbit IgG (H+L) (ABIN1684268 and ABIN3020597) at 1:10000 dilution. Lysates/proteins: 25 µg per lane. Blocking buffer: 3% nonfat dry milk in TBST. Detection: ECL Basic Kit (RM00020). Exposure time: 30s.