



[Go to Product page](#)

Datasheet for ABIN6142894
anti-KIRREL2 antibody (AA 21-220)

1 Image

Overview

Quantity:	100 µL
Target:	KIRREL2
Binding Specificity:	AA 21-220
Reactivity:	Human
Host:	Rabbit
Clonality:	Polyclonal
Conjugate:	This KIRREL2 antibody is un-conjugated
Application:	Western Blotting (WB)

Product Details

Immunogen:	Recombinant fusion protein containing a sequence corresponding to amino acids 21-220 of human KIRREL2 (NP_954649.3).
Sequence:	GSPHFLQQP EDLVLLGEE ARLPCALGAY WGLVQWTKSG LALGGQRDLP GWSRYWISGN AANGQHDLHI RPVELEDEAS YECQATQAGL RSRPAQLHVL VPPEAPQVLG GPSVSLVAGV PANLTCRSRG DARPTPELLW FRDGVLLDGA TFHQTLKKEG TPGSVESTLT LTPFSHDDGA TFVCRARSQA LPTGRDTAIT
Isotype:	IgG
Cross-Reactivity:	Human, Mouse, Rat
Characteristics:	Polyclonal Antibodies

Target Details

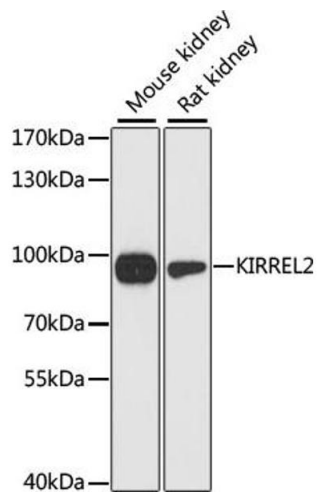
Target:	KIRREL2
Alternative Name:	KIRREL2 (KIRREL2 Products)
Background:	This gene encodes a type I transmembrane protein and member of the immunoglobulin superfamily of cell adhesion molecules. The encoded protein localizes to adherens junctions in pancreatic beta cells and regulates insulin secretion. Autoantibodies against the encoded protein have been detected in serum from patients with type 1 diabetes. This gene may also play a role in glomerular development and decreased expression of this gene has been observed in human glomerular diseases. This gene and the related opposite-strand gene nephrin (GenID: 527362) are regulated by a bidirectional promoter.,KIRREL2,FILTRIN,NEPH3,NLG1,Cell Biology & Developmental Biology,KIRREL2
Molecular Weight:	23 kDa/61 kDa/67 kDa/75 kDa
Gene ID:	84063
UniProt:	Q6UWL6

Application Details

Application Notes:	WB,1:1000 - 1:2000
Restrictions:	For Research Use only

Handling

Format:	Liquid
Buffer:	PBS with 0.02 % sodium azide,50 % glycerol, pH 7.3.
Preservative:	Sodium azide
Precaution of Use:	This product contains Sodium azide: a POISONOUS AND HAZARDOUS SUBSTANCE which should be handled by trained staff only.
Storage:	-20 °C
Storage Comment:	Store at -20°C. Avoid freeze / thaw cycles.



Western Blotting

Image 1. Western blot analysis of extracts of various cell lines, using KIRREL2 antibody (ABIN6131670, ABIN6142894, ABIN6142895 and ABIN6217008) at 1:3000 dilution. Secondary antibody: HRP Goat Anti-Rabbit IgG (H+L) (ABIN1684268 and ABIN3020597) at 1:10000 dilution. Lysates/proteins: 25 μ g per lane. Blocking buffer: 3% nonfat dry milk in TBST. Detection: ECL Basic Kit (RM00020). Exposure time: 90s.