



[Go to Product page](#)

Datasheet for ABIN6142907

## anti-KLF10/TIEG1 antibody (AA 161-365)

### 1 Image

#### Overview

Quantity:	100 µL
Target:	KLF10/TIEG1 (KLF10)
Binding Specificity:	AA 161-365
Reactivity:	Human
Host:	Rabbit
Clonality:	Polyclonal
Conjugate:	This KLF10/TIEG1 antibody is un-conjugated
Application:	Western Blotting (WB)

#### Product Details

Immunogen:	Recombinant fusion protein containing a sequence corresponding to amino acids 161-365 of human KLF10 (NP_001027453.1).
Sequence:	MKAASILNYQ NNSFRRRTHL NVEAARKNIP CAAVSPNRSK CERNTVADVD EKASAALYDF SVPSSSETVIC RSQPAPVSPQ QKSVLVSPPA VSAGGVPPMP VICQMVPLPA NNPVWTTVVP STPPSQPPAV CPPVVFMTGTQ VPKGAVMFVW PQPVVQSSKP PVVSPNGTRL SPIAPAGFS PSAAKVTPQI DSSRIRSHIC SHPGC
Isotype:	IgG
Cross-Reactivity:	Mouse, Rat
Characteristics:	Polyclonal Antibodies

## Target Details

---

Target:	KLF10/TIEG1 (KLF10)
Alternative Name:	KLF10 ( <a href="#">KLF10 Products</a> )
Background:	This gene encodes a member of a family of proteins that feature C2H2-type zinc finger domains. The encoded protein is a transcriptional repressor that acts as an effector of transforming growth factor beta signaling. Activity of this protein may inhibit the growth of cancers, particularly pancreatic cancer. Alternative splicing results in multiple transcript variants.,KLF10,EGR-alpha,EGR1,TIEG,TIEG1,Epigenetics & Nuclear Signaling,Transcription Factors,Nuclear Receptor Signaling,Nuclear hormone receptors,Cancer,Signal Transduction,Cell Biology & Developmental Biology,Growth factor,Cardiovascular,Heart,Hypertrophy,KLF10
Molecular Weight:	10 kDa/13 kDa/51 kDa/52 kDa
Gene ID:	7071
UniProt:	<a href="#">Q13118</a>
Pathways:	<a href="#">Stem Cell Maintenance</a>

## Application Details

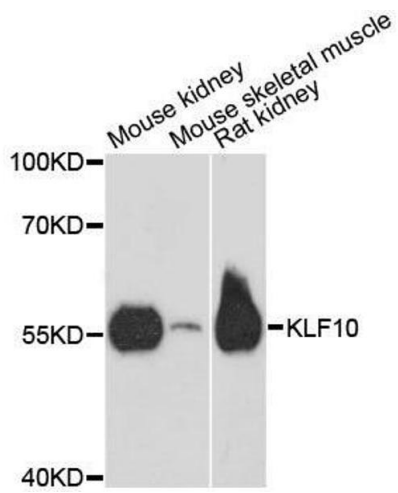
---

Application Notes:	WB,1:500 - 1:2000
Comment:	HIGH QUALITY
Restrictions:	For Research Use only

## Handling

---

Format:	Liquid
Buffer:	PBS with 0.02 % sodium azide,50 % glycerol, pH 7.3.
Preservative:	Sodium azide
Precaution of Use:	This product contains Sodium azide: a POISONOUS AND HAZARDOUS SUBSTANCE which should be handled by trained staff only.
Storage:	-20 °C
Storage Comment:	Store at -20°C. Avoid freeze / thaw cycles.



### Western Blotting

**Image 1.** Western blot analysis of extracts of various cell lines, using KLF10 antibody.