



[Go to Product page](#)

Datasheet for ABIN6142918
anti-KLF3 antibody (AA 1-240)

2 Images

Overview

Quantity:	100 µL
Target:	KLF3
Binding Specificity:	AA 1-240
Reactivity:	Human
Host:	Rabbit
Clonality:	Polyclonal
Conjugate:	This KLF3 antibody is un-conjugated
Application:	Western Blotting (WB), Immunofluorescence (IF)

Product Details

Immunogen:	Recombinant fusion protein containing a sequence corresponding to amino acids 1-240 of human KLF3 (NP_057615.3).
Sequence:	MLMFDPPVPVK QEAMDPVSVS YPSNYMESMK PNKYGVIYST PLPEKFFQTP EGLSHGIQME PVDLTVNKRS SPPSAGNSPS SLKFPSSHRR ASPGLSMPSS SPPIKKYSPP SPGVQPFQVP LSMPPVMAAA LSRHGIRSPG ILPVIQPVVV QVPVPMYTSY LQQPLMVSL EEMENSSSSM QVPVIESYEK PISQKKIKIE PGIEPQRTDY YPEEMSPPLM NSVSPQALL QENHPSVIVQ
Isotype:	IgG
Cross-Reactivity:	Human
Characteristics:	Polyclonal Antibodies

Target Details

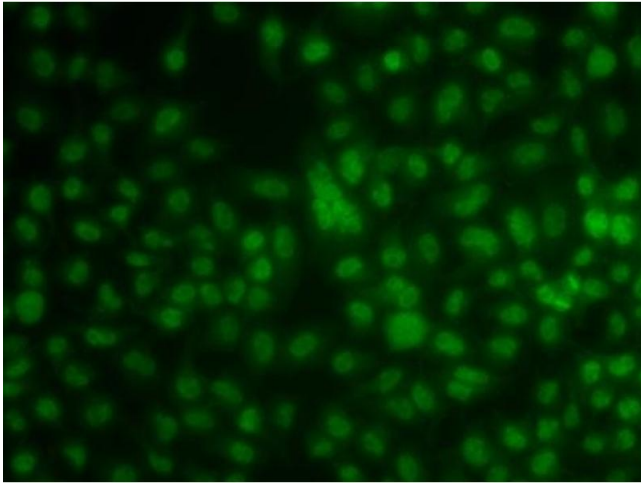
Target:	KLF3
Alternative Name:	KLF3 (KLF3 Products)
Background:	Binds to the CACCC box of erythroid cell-expressed genes. May play a role in hematopoiesis (By similarity, KLF3, BKLF, Epigenetics & Nuclear Signaling, Transcription Factors, KLF3)
Molecular Weight:	25 kDa/38 kDa
Gene ID:	51274
UniProt:	P57682

Application Details

Application Notes:	WB, 1:500 - 1:2000, IF, 1:50 - 1:100
Restrictions:	For Research Use only

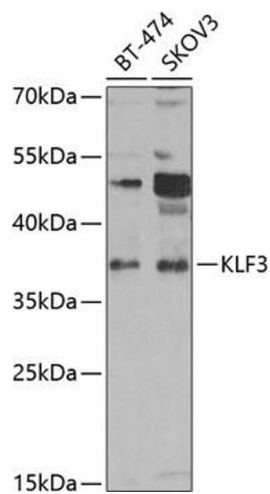
Handling

Format:	Liquid
Buffer:	PBS with 0.02 % sodium azide, 50 % glycerol, pH 7.3.
Preservative:	Sodium azide
Precaution of Use:	This product contains Sodium azide: a POISONOUS AND HAZARDOUS SUBSTANCE which should be handled by trained staff only.
Storage:	-20 °C
Storage Comment:	Store at -20°C. Avoid freeze / thaw cycles.



Immunofluorescence

Image 1. Immunofluorescence analysis of cells using KLF3 antibody (ABIN6130892, ABIN6142918, ABIN6142919 and ABIN6223018).



Western Blotting

Image 2. Western blot analysis of extracts of various cell lines, using KLF3 antibody (ABIN6130892, ABIN6142918, ABIN6142919 and ABIN6223018) at 1:1000 dilution. Secondary antibody: HRP Goat Anti-Rabbit IgG (H+L) (ABIN1684268 and ABIN3020597) at 1:10000 dilution. Lysates/proteins: 25 µg per lane. Blocking buffer: 3 % nonfat dry milk in TBST. Detection: ECL Enhanced Kit (RM00021). Exposure time: 60s.