



[Go to Product page](#)

Datasheet for ABIN6142929
anti-KLHDC3 antibody (AA 1-382)

1 Image

Overview

Quantity:	100 µL
Target:	KLHDC3
Binding Specificity:	AA 1-382
Reactivity:	Human
Host:	Rabbit
Clonality:	Polyclonal
Conjugate:	This KLHDC3 antibody is un-conjugated
Application:	Western Blotting (WB), Immunohistochemistry (IHC)

Product Details

Immunogen:	Recombinant fusion protein containing a sequence corresponding to amino acids 1-382 of human KLHDC3 (NP_476502.1).
Sequence:	MLRWTVHLEG GPRRVNHA AV AVGHVYSFG GYCSGEDYET LRQIDVHIFN AVSLRWTKLP PVKSAIRGQA PVVPYMRYGH STVLIDDTVL LWGGRNDTEG ACNVLYAFDV NTHKWFTPRV SGTVPGARDG HSACVLGKIM YIFGGYEQQA DCFSNDIHKL DTSTMTWTLI CTKGSPARWR DFHSATMLGS HMYVFGGRAD RFGPFHSNNE IYCNRIRVFD TRTEAWLDCP PTPVLPEGRR SHSAFGYNGE LYIFGGYNAR LNRHFHDLWK FNPVSFTWKK IEPKGGKPCP RRRQCCIVG DKIVLFGGTS PSPEEGLGDE FDLIDHSDLH ILDFSPSLKT LCKLAVIQYN LDQSCLPHDI RWELNAMTTN SNISRPIVSS HG
Isotype:	IgG
Cross-Reactivity:	Human, Mouse, Rat

Product Details

Characteristics: Polyclonal Antibodies

Target Details

Target: KLHDC3

Alternative Name: KLHDC3 ([KLHDC3 Products](#))

Background: The protein encoded by this gene contains six repeated kelch motifs that are structurally similar to recombination activating gene 2, a protein involved in the activation of the V(D)J recombination. In mouse, this gene is found to be expressed specifically in testis. Its expression in pachytene spermatocytes is localized to cytoplasm and meiotic chromatin, suggesting that this gene may be involved in meiotic recombination.,KLHDC3,PEAS,dJ20C7.3,Epigenetics & Nuclear Signaling,KLHDC3

Molecular Weight: 43 kDa

Gene ID: 116138

UniProt: [Q9BQ90](#)

Pathways: [Chromatin Binding](#), [ER-Nucleus Signaling](#)

Application Details

Application Notes: WB,1:500 - 1:2000,IHC,1:50 - 1:200

Restrictions: For Research Use only

Handling

Format: Liquid

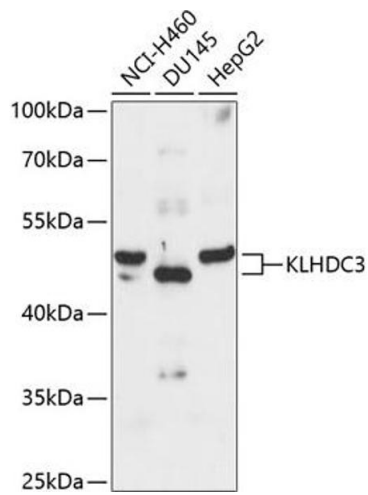
Buffer: PBS with 0.02 % sodium azide,50 % glycerol, pH 7.3.

Preservative: Sodium azide

Precaution of Use: This product contains Sodium azide: a POISONOUS AND HAZARDOUS SUBSTANCE which should be handled by trained staff only.

Storage: -20 °C

Storage Comment: Store at -20°C. Avoid freeze / thaw cycles.



Western Blotting

Image 1. Western blot analysis of extracts of various cell lines, using KLHDC3 antibody at 1:3000 dilution. Secondary antibody: HRP Goat Anti-Rabbit IgG (H+L) (ABIN1684268 and ABIN3020597) at 1:10000 dilution. Lysates/proteins: 25 µg per lane. Blocking buffer: 3% nonfat dry milk in TBST. Detection: ECL Basic Kit (RM00020). Exposure time: 90s.