



[Go to Product page](#)

Datasheet for ABIN6142940
anti-KLHL9 antibody (AA 1-100)

5 Images

Overview

Quantity:	100 µL
Target:	KLHL9
Binding Specificity:	AA 1-100
Reactivity:	Human
Host:	Rabbit
Clonality:	Polyclonal
Conjugate:	This KLHL9 antibody is un-conjugated
Application:	Western Blotting (WB), Immunohistochemistry (IHC)

Product Details

Immunogen:	Recombinant fusion protein containing a sequence corresponding to amino acids 1-100 of human KLHL9 (NP_061335.1).
Sequence:	MKVSLGNGEM GVSAHLQPCK AGTTRFFTSN THSSVVLQGF DQLRIEGLLC DVTLVPGDGD EIFPVHRAMM ASASDYFKAM FTGGMKEQDL MCICKLHGVNK
Isotype:	IgG
Cross-Reactivity:	Human, Mouse, Rat
Characteristics:	Polyclonal Antibodies

Target Details

Target:	KLHL9
---------	-------

Target Details

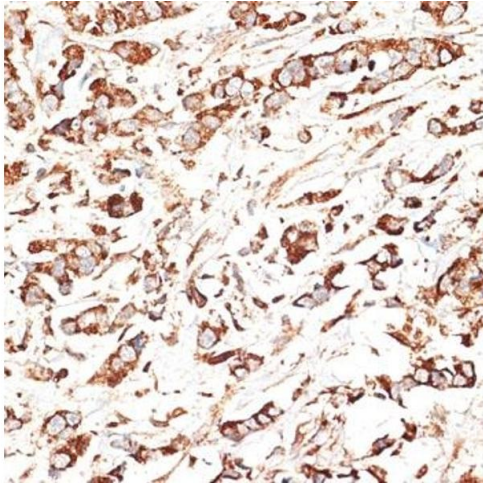
Alternative Name:	KLHL9 (KLHL9 Products)
Background:	<p>This gene encodes a protein that belongs to the kelch repeat-containing family, and contains an N-terminal BTB/POZ domain, a BACK domain and six C-terminal kelch repeats. The encoded protein is a component of a complex with cullin 3-based E3 ligase, which plays a role in mitosis. This protein complex is a cell cycle regulator, and functions in the organization and integrity of the spindle midzone in anaphase and the completion of cytokinesis. The complex is required for the removal of the chromosomal passenger protein aurora B from mitotic chromosomes. [provided by RefSeq, Jul 2016],KLHL9,Cell Biology & Developmental Biology,Cell Cycle,Cell differentiation,Ubiquitin,Ubiquitin-Proteasome Signaling Pathway,KLHL9</p>
Molecular Weight:	69 kDa
Gene ID:	55958
UniProt:	Q9P2J3

Application Details

Application Notes:	WB,1:500 - 1:2000,IHC,1:50 - 1:200
Comment:	HIGH QUALITY
Restrictions:	For Research Use only

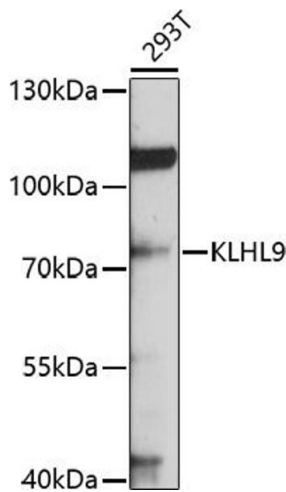
Handling

Format:	Liquid
Buffer:	PBS with 0.02 % sodium azide,50 % glycerol, pH 7.3.
Preservative:	Sodium azide
Precaution of Use:	This product contains Sodium azide: a POISONOUS AND HAZARDOUS SUBSTANCE which should be handled by trained staff only.
Storage:	-20 °C
Storage Comment:	Store at -20°C. Avoid freeze / thaw cycles.



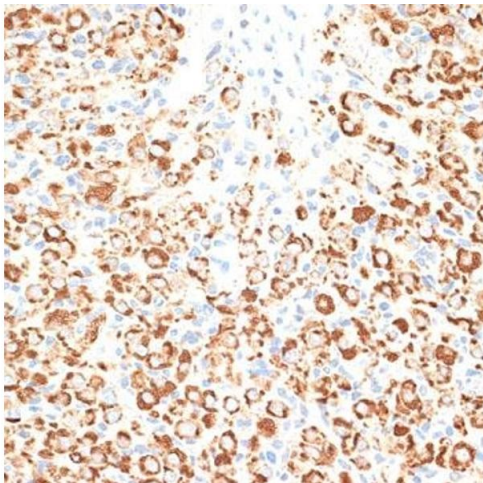
Immunohistochemistry

Image 1. Immunohistochemistry of paraffin-embedded human breast cancer using KLHL9 antibody (ABIN6132083, ABIN6142940, ABIN6142941 and ABIN6214299) at dilution of 1:100 (40x lens). Perform microwave antigen retrieval with 10 mM PBS buffer pH 7.2 before commencing with IHC staining protocol.



Western Blotting

Image 2. Western blot analysis of extracts of 293T cells, using KLHL9 antibody (ABIN6132083, ABIN6142940, ABIN6142941 and ABIN6214299) at 1:1000 dilution. Secondary antibody: HRP Goat Anti-Rabbit IgG (H+L) (ABIN1684268 and ABIN3020597) at 1:10000 dilution. Lysates/proteins: 25 µg per lane. Blocking buffer: 3 % nonfat dry milk in TBST. Detection: ECL Basic Kit (RM00020). Exposure time: 30s.



Immunohistochemistry

Image 3. Immunohistochemistry of paraffin-embedded rat ovary using KLHL9 antibody (ABIN6132083, ABIN6142940, ABIN6142941 and ABIN6214299) at dilution of 1:100 (40x lens). Perform microwave antigen retrieval with 10 mM PBS buffer pH 7.2 before commencing with IHC staining protocol.

Please check the [product details page](#) for more images. Overall 5 images are available for ABIN6142940.