

Datasheet for ABIN6142957
anti-Kallikrein 6 antibody (C-Term)[Go to Product page](#)

1 Image

Overview

Quantity:	100 µL
Target:	Kallikrein 6 (KLK6)
Binding Specificity:	C-Term
Reactivity:	Human
Host:	Rabbit
Clonality:	Polyclonal
Conjugate:	This Kallikrein 6 antibody is un-conjugated
Application:	Western Blotting (WB)

Product Details

Immunogen:	A synthetic peptide corresponding to a sequence within amino acids 100 to the C-terminus of human KLK6 (NP_002765.1).
Sequence:	AASHDQDIML LRLARPAKLS ELIQPLPLER DCSANTTSCH ILGWGKTADG DFPDTIQCAY IHLVSREECE HAYPGQITQN MLCAGDEKYG KDSCQGDSGG PLVCGDHLRG LVSWGNI PCG SKEKPGVYTN VCRYTNWQIK TIQAK
Isotype:	IgG
Cross-Reactivity:	Human, Mouse, Rat
Characteristics:	Polyclonal Antibodies

Target Details

Target:	Kallikrein 6 (KLK6)
---------	---------------------

Target Details

Alternative Name:	KLK6 (KLK6 Products)
Background:	<p>This gene encodes a member of the kallikrein subfamily of the peptidase S1 family of serine proteases. Growing evidence suggests that many kallikreins are implicated in carcinogenesis and some have potential as novel cancer and other disease biomarkers. The encoded preproprotein is proteolytically processed to generate the mature protease. Expression of this protease is regulated by steroid hormones and may be elevated in multiple human cancers and in serum from psoriasis patients. The encoded protease may participate in the cleavage of amyloid precursor protein and alpha-synuclein, thus implicating this protease in Alzheimer's and Parkinson's disease, respectively. This gene is located in a gene cluster on chromosome 19. Alternative splicing results in multiple transcript variants, at least one of which encodes an isoform that is proteolytically</p> <p>processed.,KLK6,Bssp,Klk7,PRSS18,PRSS9,SP59,hK6,Cancer,Invasion and Metastasis,Signal Transduction,Cell Biology & Developmental Biology,Cytoskeleton,Extracellular Matrix,Ubiquitin,Neuroscience,Cell Type Marker,Neurodegenerative Diseases,Amyloid Plaque and Neurofibrillary Tangle Formation in Alzheimer's Disease,KLK6</p>
Molecular Weight:	4 kDa/15 kDa/26 kDa
Gene ID:	5653
UniProt:	Q92876
Pathways:	Complement System , Regulation of G-Protein Coupled Receptor Protein Signaling

Application Details

Application Notes:	WB,1:500 - 1:2000
Restrictions:	For Research Use only

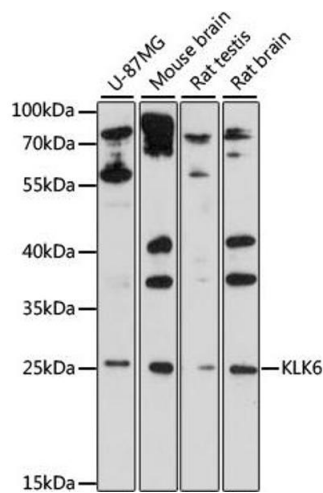
Handling

Format:	Liquid
Buffer:	PBS with 0.02 % sodium azide,50 % glycerol, pH 7.3.
Preservative:	Sodium azide
Precaution of Use:	This product contains Sodium azide: a POISONOUS AND HAZARDOUS SUBSTANCE which should be handled by trained staff only.
Storage:	-20 °C

Handling

Storage Comment: Store at -20°C. Avoid freeze / thaw cycles.

Images



Western Blotting

Image 1. Western blot analysis of extracts of various cell lines, using KLK6 antibody (ABIN6133786, ABIN6142957, ABIN6142959 and ABIN6215531) at 1:1000 dilution. Secondary antibody: HRP Goat Anti-Rabbit IgG (H+L) (ABIN1684268 and ABIN3020597) at 1:10000 dilution. Lysates/proteins: 25 µg per lane. Blocking buffer: 3 % nonfat dry milk in TBST. Detection: ECL Basic Kit (RM00020). Exposure time: 90s.