

Datasheet for ABIN6142958  
**anti-Kallikrein 6 antibody (C-Term)**



[Go to Product page](#)

1 Image

## Overview

|                      |   |
|----------------------|---|
| Quantity:            | 100 µL                                      |
| Target:              | Kallikrein 6 (KLK6)                         |
| Binding Specificity: | C-Term                                      |
| Reactivity:          | Human                                       |
| Host:                | Rabbit                                      |
| Clonality:           | Polyclonal                                  |
| Conjugate:           | This Kallikrein 6 antibody is un-conjugated |
| Application:         | Western Blotting (WB)                       |

## Product Details

|                   |   |
|-------------------|---|
| Immunogen:        | A synthetic peptide corresponding to a sequence within amino acids 100 to the C-terminus of human KLK6 (NP_002765.1).   |
| Sequence:         | AASHDQDIML LRLARPAKLS ELIQPLPLER DCSANTTSCH ILGWGKTADG DFPDTIQCAY<br>IHLVSREECE HAYPGQITQN MLCAGDEKYG KDSCQGDSGG PLVCGDHLRG LVSWGNIPCG<br>SKEKPGVYTN VCRYTNWIQK TIQAK |
| Isotype:          | IgG   |
| Cross-Reactivity: | Human   |
| Characteristics:  | Polyclonal Antibodies   |

## Target Details

|         |                     |
|---------|---------------------|
| Target: | Kallikrein 6 (KLK6) |
|---------|---------------------|

## Target Details

---

Alternative Name: [KLK6 \(KLK6 Products\)](#)

---

Background: This gene encodes a member of the kallikrein subfamily of the peptidase S1 family of serine proteases. Growing evidence suggests that many kallikreins are implicated in carcinogenesis and some have potential as novel cancer and other disease biomarkers. The encoded preproprotein is proteolytically processed to generate the mature protease. Expression of this protease is regulated by steroid hormones and may be elevated in multiple human cancers and in serum from psoriasis patients. The encoded protease may participate in the cleavage of amyloid precursor protein and alpha-synuclein, thus implicating this protease in Alzheimer's and Parkinson's disease, respectively. This gene is located in a gene cluster on chromosome 19. Alternative splicing results in multiple transcript variants, at least one of which encodes an isoform that is proteolytically processed. [KLK6](#), [Bssp](#), [Klk7](#), [PRSS18](#), [PRSS9](#), [SP59](#), [hK6](#), [Cancer](#), [Invasion and Metastasis](#), [Signal Transduction](#), [Cell Biology & Developmental Biology](#), [Cytoskeleton](#), [Extracellular Matrix](#), [Ubiquitin](#), [Neuroscience](#), [Cell Type Marker](#), [Neurodegenerative Diseases](#), [Amyloid Plaque and Neurofibrillary Tangle Formation in Alzheimer's Disease](#), [KLK6](#)

---

Molecular Weight: 4 kDa/15 kDa/26 kDa

---

Gene ID: 5653

---

UniProt: [Q92876](#)

---

Pathways: [Complement System](#), [Regulation of G-Protein Coupled Receptor Protein Signaling](#)

---

## Application Details

---

Application Notes: WB, 1:500 - 1:2000

---

Comment: HIGH QUALITY

---

Restrictions: For Research Use only

---

## Handling

---

Format: Liquid

---

Buffer: PBS with 0.02 % sodium azide, 50 % glycerol, pH 7.3.

---

Preservative: Sodium azide

---

Precaution of Use: This product contains Sodium azide: a POISONOUS AND HAZARDOUS SUBSTANCE which should be handled by trained staff only.

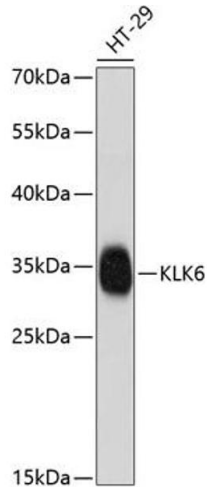
---

## Handling

Storage: -20 °C

Storage Comment: Store at -20°C. Avoid freeze / thaw cycles.

## Images



### Western Blotting

**Image 1.** Western blot analysis of extracts of HT-29 cells, using KLK6 antibody at 1:1000 dilution. Secondary antibody: HRP Goat Anti-Rabbit IgG (H+L) (ABIN1684268 and ABIN3020597) at 1:10000 dilution. Lysates/proteins: 25 µg per lane. Blocking buffer: 3% nonfat dry milk in TBST. Detection: ECL Enhanced Kit (RM00021). Exposure time: 90s.