

Datasheet for ABIN6142961
anti-Kallikrein 7 antibody (AA 30-253)[Go to Product page](#)

1 Image

Overview

Quantity:	100 µL
Target:	Kallikrein 7 (KLK7)
Binding Specificity:	AA 30-253
Reactivity:	Human
Host:	Rabbit
Clonality:	Polyclonal
Conjugate:	This Kallikrein 7 antibody is un-conjugated
Application:	Western Blotting (WB)

Product Details

Immunogen:	Recombinant fusion protein containing a sequence corresponding to amino acids 30-253 of human KLK7 (NP_644806.1).
Sequence:	IIDGAPCARG SHPWQVALLS GNQLHCGGV L VNERWVL TAA HCKMNEYTVH LGSDTLGDRR AQRIKASKSF RHPGYSTQTH VNDLMLVKLN SQARLSSMVK KVR LPSRCEP PGTTCTVSGW GTTTSPDVTF PSDLMCVDVK LISPQDCTKV YKD LLENSML CAGIPDSKKN ACNGDSGGPL VCRGTLQGLV SWGTFPCGQP NDPGVYTQVC KFTKWINDTM KKHR
Isotype:	IgG
Cross-Reactivity:	Human, Mouse
Characteristics:	Polyclonal Antibodies

Target Details

Target:	Kallikrein 7 (KLK7)
Alternative Name:	KLK7 (KLK7 Products)
Background:	<p>This gene encodes a member of the kallikrein subfamily of serine proteases. These enzymes have diverse physiological functions and many kallikrein genes are biomarkers for cancer. The encoded protein has chymotrypsin-like activity and plays a role in the proteolysis of intercellular cohesive structures that precedes desquamation, the shedding of the outermost layer of the epidermis. The encoded protein may play a role in cancer invasion and metastasis, and increased expression of this gene is associated with unfavorable prognosis and progression of several types of cancer. Polymorphisms in this gene may play a role in the development of atopic dermatitis. Alternatively spliced transcript variants encoding multiple isoforms have been observed for this gene, which is one of fifteen kallikrein subfamily members located in a gene cluster on chromosome 19.,KLK7,PRSS6,SCCE,hK7,Cancer,Invasion and Metastasis,Signal Transduction,Cell Biology & Developmental Biology,Cytoskeleton,Extracellular Matrix,Ubiquitin,KLK7</p>
Molecular Weight:	19 kDa/27 kDa
Gene ID:	5650
UniProt:	P49862
Pathways:	Complement System

Application Details

Application Notes:	WB,1:500 - 1:2000
Comment:	HIGH QUALITY
Restrictions:	For Research Use only

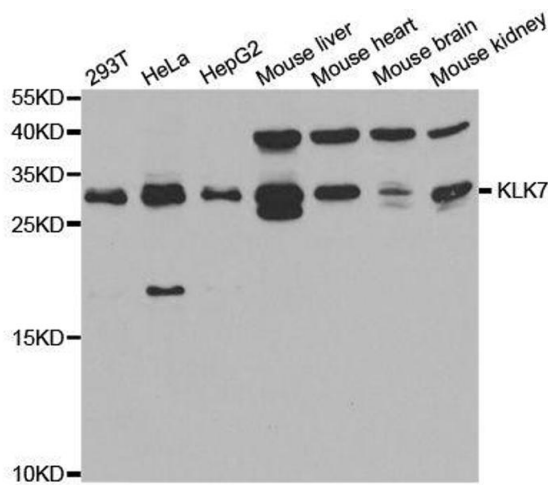
Handling

Format:	Liquid
Buffer:	PBS with 0.02 % sodium azide,50 % glycerol, pH 7.3.
Preservative:	Sodium azide
Precaution of Use:	This product contains Sodium azide: a POISONOUS AND HAZARDOUS SUBSTANCE which should be handled by trained staff only.
Storage:	-20 °C

Handling

Storage Comment: Store at -20°C. Avoid freeze / thaw cycles.

Images



Western Blotting

Image 1. Western blot analysis of extracts of various cell lines, using KLK7 antibody.