



[Go to Product page](#)

Datasheet for ABIN6142987  
**anti-KNTC1 antibody (AA 900-1100)**

1 Image

Overview

Quantity:	100 µL
Target:	KNTC1
Binding Specificity:	AA 900-1100
Reactivity:	Human
Host:	Rabbit
Clonality:	Polyclonal
Conjugate:	This KNTC1 antibody is un-conjugated
Application:	Western Blotting (WB)

Product Details

Immunogen:	Recombinant fusion protein containing a sequence corresponding to amino acids 900-1100 of human KNTC1 (NP_055523.1).
Sequence:	IDLIDREQGE DCLLLLKSLP PAEAEKTAER VIIWARLALQ EEPDHSKEGK AWRMSVAKTS VDILKILCDI QKDNLQKKDE CEEMLKLFKE VASLQENFEV FLSFEDYSNS SLVADLREQH IKAHEVAQAK HKPGSTPEPI AAEVRSPSME SKLHRQALAL QMSKQELEAE LTLRALKDGN IKTALKKCS D LFKYHCNADT G
Isotype:	IgG
Cross-Reactivity:	Human, Rat
Characteristics:	Polyclonal Antibodies

## Target Details

---

Target:	KNTC1
Alternative Name:	KNTC1 ( <a href="#">KNTC1 Products</a> )
Background:	This gene encodes a protein that is one of many involved in mechanisms to ensure proper chromosome segregation during cell division. Experimental evidence indicated that the encoded protein functioned in a similar manner to that of the Drosophila rough deal protein.,KNTC1,ROD,Epigenetics & Nuclear Signaling,Cell Biology & Developmental Biology,Cell Cycle,Centromere,KNTC1
Molecular Weight:	51 kDa/250 kDa
Gene ID:	9735
UniProt:	<a href="#">P50748</a>

## Application Details

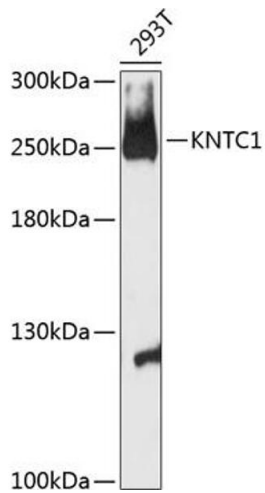
---

Application Notes:	WB,1:500 - 1:2000
Restrictions:	For Research Use only

## Handling

---

Format:	Liquid
Buffer:	PBS with 0.02 % sodium azide,50 % glycerol, pH 7.3.
Preservative:	Sodium azide
Precaution of Use:	This product contains Sodium azide: a POISONOUS AND HAZARDOUS SUBSTANCE which should be handled by trained staff only.
Storage:	-20 °C
Storage Comment:	Store at -20°C. Avoid freeze / thaw cycles.



### Western Blotting

**Image 1.** Western blot analysis of extracts of 293T cells, using KNTC1 antibody (ABIN6128162, ABIN6142987, ABIN6142988 and ABIN6216914) at 1:3000 dilution. Secondary antibody: HRP Goat Anti-Rabbit IgG (H+L) (ABIN1684268 and ABIN3020597) at 1:10000 dilution. Lysates/proteins: 25 µg per lane. Blocking buffer: 3 % nonfat dry milk in TBST. Detection: ECL Basic Kit (RM00020). Exposure time: 30s.