



[Go to Product page](#)

Datasheet for ABIN6143021  
**anti-KRT16 antibody (AA 190-430)**

6 Images

Overview

Quantity:	100 µL
Target:	KRT16
Binding Specificity:	AA 190-430
Reactivity:	Human
Host:	Rabbit
Clonality:	Polyclonal
Conjugate:	This KRT16 antibody is un-conjugated
Application:	Western Blotting (WB), Immunohistochemistry (IHC), Immunofluorescence (IF)

Product Details

Immunogen:	Recombinant fusion protein containing a sequence corresponding to amino acids 190-430 of human Cytokeratin 16 (KRT16) (NP_005548.2).
Sequence:	LQIDNARLAA DDFRTKYEHE LALRQTVEAD VNGLRRVLDE LTLARTDLEM QIEGLKEELA YLRKNHEEEM LALRGQTGGD VNVEMDAAPG VDLRILNEM RDQYEQMAEK NRRDAETWFL SKTEELNKEV ASNSELVQSS RSEVTELRRV LQGLEIELQS QL SMKASLEN SLEETKGRYC MQLSQQGLI GSVEEQLAQL RCEMEQQSQE YQILLDVKTR LEQEIATYRR LLEGEDAHLS S
Isotype:	IgG
Cross-Reactivity:	Human, Mouse, Rat
Characteristics:	Polyclonal Antibodies

## Target Details

---

Target:	KRT16
Alternative Name:	KRT16 ( <a href="#">KRT16 Products</a> )
Background:	<p>The protein encoded by this gene is a member of the keratin gene family. The keratins are intermediate filament proteins responsible for the structural integrity of epithelial cells and are subdivided into cytokeratins and hair keratins. Most of the type I cytokeratins consist of acidic proteins which are arranged in pairs of heterotypic keratin chains and are clustered in a region of chromosome 17q12-q21. This keratin has been coexpressed with keratin 14 in a number of epithelial tissues, including esophagus, tongue, and hair follicles. Mutations in this gene are associated with type 1 pachyonychia congenita, non-epidermolytic palmoplantar keratoderma and unilateral palmoplantar verrucous nevus.,KRT16,CK16,FNEPPK,K16,K1CP,KRT16A,NEPPK,PC1,Signal Transduction,Cell Biology &amp; Developmental Biology,Cytoskeleton,Intermediate Filaments,Extracellular Matrix,Cytokeratin,Keratin,KRT16</p>
Molecular Weight:	51 kDa
Gene ID:	3868
UniProt:	<a href="#">P08779</a>

## Application Details

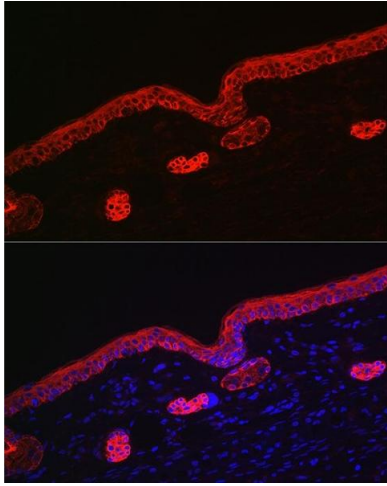
---

Application Notes:	WB,1:500 - 1:2000,IHC,1:50 - 1:200,IF,1:50 - 1:200
Comment:	HIGH QUALITY
Restrictions:	For Research Use only

## Handling

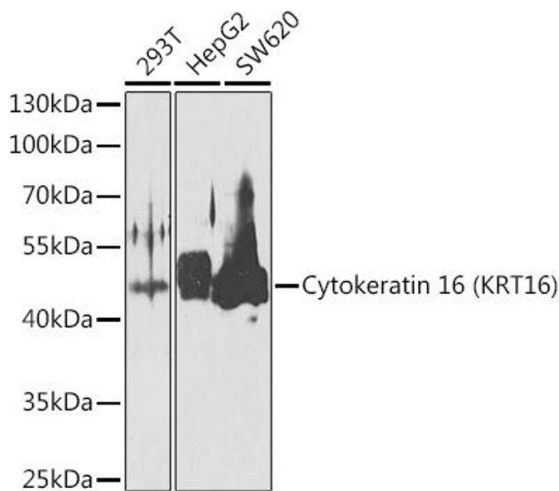
---

Format:	Liquid
Buffer:	PBS with 0.02 % sodium azide,50 % glycerol, pH 7.3.
Preservative:	Sodium azide
Precaution of Use:	This product contains Sodium azide: a POISONOUS AND HAZARDOUS SUBSTANCE which should be handled by trained staff only.
Storage:	-20 °C
Storage Comment:	Store at -20°C. Avoid freeze / thaw cycles.



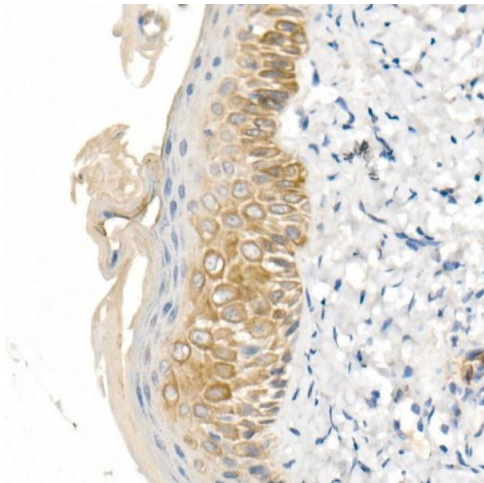
### Immunofluorescence

**Image 1.** Immunofluorescence analysis of rat skin using Cytokeratin 16 (KRT16) Rabbit pAb (ABIN6129541, ABIN6143021, ABIN6143022 and ABIN6223391) at dilution of 1:200 (40x lens). Blue: DAPI for nuclear staining.



### Western Blotting

**Image 2.** Western blot analysis of extracts of various cell lines, using Cytokeratin 16 (KRT16) antibody (ABIN6129541, ABIN6143021, ABIN6143022 and ABIN6223391) at 1:1000 dilution. Secondary antibody: HRP Goat Anti-Rabbit IgG (H+L) (ABIN1684268 and ABIN3020597) at 1:10000 dilution. Lysates/proteins: 25 µg per lane. Blocking buffer: 3 % nonfat dry milk in TBST. Detection: ECL Basic Kit (RM00020). Exposure time: 60s.



### Immunohistochemistry

**Image 3.** Immunohistochemistry of paraffin-embedded human skin using Cytokeratin 16 (KRT16) Rabbit pAb (ABIN6129541, ABIN6143021, ABIN6143022 and ABIN6223391) at dilution of 1:100 (40x lens). Perform high pressure antigen retrieval with 10 mM citrate buffer pH 6.0 before commencing with IHC staining protocol.

Please check the [product details page](#) for more images. Overall 6 images are available for ABIN6143021.