

Datasheet for ABIN6143053
anti-L1CAM antibody (AA 1143-1257)[Go to Product page](#)

4 Images

Overview

Quantity:	100 µL
Target:	L1CAM
Binding Specificity:	AA 1143-1257
Reactivity:	Human
Host:	Rabbit
Clonality:	Polyclonal
Conjugate:	This L1CAM antibody is un-conjugated
Application:	Western Blotting (WB), Immunofluorescence (IF)

Product Details

Immunogen:	Recombinant fusion protein containing a sequence corresponding to amino acids 1143-1257 of human L1CAM (NP_000416.1).
Sequence:	IKRSKGGKYS VKDKEDTQVD SEARPMKDET FGEYRSLESD NEEKAFGSSQ PSLNGDIKPL GSDDSLADYG GSVDVQFNED GSFIGQYSGK KEKEAAGGND SSGATSPINP AVALE
Isotype:	IgG
Cross-Reactivity:	Human, Mouse, Rat
Characteristics:	Polyclonal Antibodies

Target Details

Target:	L1CAM
---------	-------

Target Details

Alternative Name:	L1CAM (L1CAM Products)
Background:	<p>The protein encoded by this gene is an axonal glycoprotein belonging to the immunoglobulin supergene family. The ectodomain, consisting of several immunoglobulin-like domains and fibronectin-like repeats (type III), is linked via a single transmembrane sequence to a conserved cytoplasmic domain. This cell adhesion molecule plays an important role in nervous system development, including neuronal migration and differentiation. Mutations in the gene cause X-linked neurological syndromes known as CRASH (corpus callosum hypoplasia, retardation, aphasia, spastic paraplegia and hydrocephalus). Alternative splicing of this gene results in multiple transcript variants, some of which include an alternate exon that is considered to be specific to neurons.</p> <p>L1CAM,CAML1,CD171,HSAS,HSAS1,MASA,MIC5,N-CAM-L1,N-CAML1,NCAM-L1,S10,SPG1,Signal Transduction,Cell Biology & Developmental Biology,Cell Adhesion,Cell Adhesion Molecules,Cytoskeleton,Immunology & Inflammation,CD markers,Neuroscience,Amyloid Plaque and Neurofibrillary Tangle Formation in Alzheimer's Disease,Neurodegenerative Diseases Markers,L1CAM</p>
Molecular Weight:	138 kDa/139 kDa/140 kDa
Gene ID:	3897
UniProt:	P32004
Pathways:	Synaptic Membrane

Application Details

Application Notes:	WB,1:500 - 1:2000,IF,1:50 - 1:200
Comment:	HIGH QUALITY
Restrictions:	For Research Use only

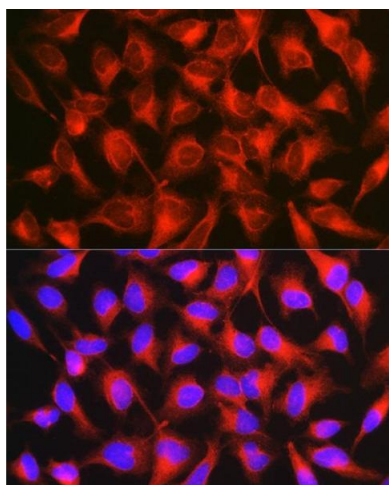
Handling

Format:	Liquid
Buffer:	PBS with 0.02 % sodium azide,50 % glycerol, pH 7.3.
Preservative:	Sodium azide
Precaution of Use:	This product contains Sodium azide: a POISONOUS AND HAZARDOUS SUBSTANCE which should be handled by trained staff only.
Storage:	-20 °C

Handling

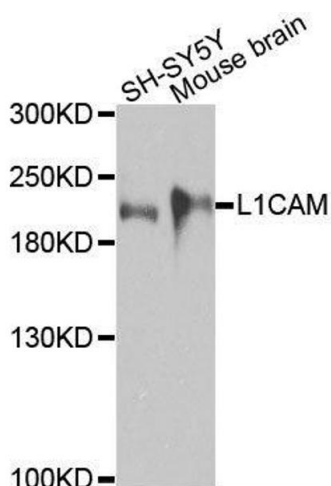
Storage Comment: Store at -20°C. Avoid freeze / thaw cycles.

Images



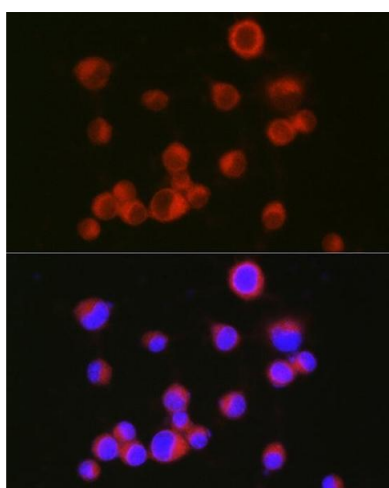
Immunofluorescence

Image 1. Immunofluorescence analysis of HeLa cells using [KO Validated] CD171/L1CAM Rabbit pAb (ABIN6131538, ABIN6143053, ABIN6143054 and ABIN7101826) at dilution of 1:150 (40x lens). Blue: DAPI for nuclear staining.



Western Blotting

Image 2. Western blot analysis of extracts of various cell lines, using L1CAM antibody.



Immunofluorescence

Image 3. Immunofluorescence analysis of Neuro-2a cells using [KO Validated] CD171/L1CAM Rabbit pAb (ABIN6131538, ABIN6143053, ABIN6143054 and ABIN7101826) at dilution of 1:150 (40x lens). Blue: DAPI for nuclear staining.

Please check the [product details page](#) for more images. Overall 4 images are available for ABIN6143053.